

Test by: Peterson Seed Testing LLC ,

2024 Corn Grain Top 30 Harvest Report

South Dakota Southeast [SDSE] TRENT, SD
Dean Jaycox, Moody County, SD

Early-Season Test	98 - 102 Day CRM B2024SDSE01a
Top 30 of 40	For Gross Income (Sorted by Yield) Average of (4) Replications
PREV. CROP/HERB:	Soybeans / Broadaxe, Sencor, Volunteer
SOIL DESCRIPTION:	Grovena-Bonilla loam, well drained, non-irrigated
SOIL CONDITION:	Conventional W/ Fall Till, very high P, very high K, 6.4 pH, 4.4% OM, 18.1 CEC
PEST MANAGEMENT:	Surestart, Callisto
FERTILITY - Applied N:	170 Fall
Applied N-P-K (units):	170-70-70
SEDED - RATE - ROW:	Apr 25 32.5 /A 30" spacing
HARVESTED - STAND:	Oct 10 29.9 /A

TEST COMMENTS:

This was a new site for the SDSE region. We were able to get it planted on April 25. Over 2 inches of rain came after planting, however the plot area could handle excess water quite well. Emergence was sufficient despite the cool and damp conditions. The weather pattern remained wet through the end of June, then turned dry into July and August. Dean commented the field around the plot made 195 bpa. Plants stood well at harvest, and stalk health was excellent.

Company/Brand	Product/Brand	Technol.†	RM	Yield Bu/A ↓	Moisture %	Lodging %	Stand (x 1000)	Gross Income \$/Acre	Rank
Heine	7480DGVT2PRIB ↗	VT2PDG	102	208.3	18.7	1	30.1	781	5
Miller Hybrids	M02-06PC ↗	PCE	102	206.7	16.6	1	30.1	793	1
Wyffels	W2386 ↗	VT2P	100	205.5	16.3	1	30.0	791	3
Renk	RK586VT4P ↗	VT4P	99	203.7	15.3	1	29.8	792	2
Renk	RK579DGV2P ↗	VT2PDG	99	202.8	15.2	1	30.1	789	4
Integra	5055 VT4PRIB ↗	VT4P	100	200.8	16.1	1	29.8	774	7
Integra	4845PCE ↗	PCE	98	200.0	15.6	1	30.5	775	6
Viking Blue River	24-01 ↗	CONV	101	199.4	17.7	1	29.8	756	12
Viking Blue River	24-99 ↗	CONV	99	198.2	16.2	1	30.1	763	10
Wyffels	W1996RIB ↗	VT2P	98	198.1	15.6	1	30.1	768	8
Dairyland	DS-3881V ↗	VE	98	198.1	15.8	1	29.8	766	9
Heine	6650TRERIB ↗	TRE	99	197.4	15.9	1	29.8	763	11
Wyffels	W1869 ↗	STXP	97	196.0	16.1	1	29.4	756	13
Heine	7025VT2PRIB ↗	VT2P	100	195.2	16.5	1	29.4	750	17
Integra	4993 TRERIB ↗	TRE	99	195.0	15.9	1	30.5	753	15
Miller Hybrids	RX00-58 ↗	CONV	100	194.9	15.7	1	29.8	755	14
Thunder	T8598 SS ↗	STX	98	194.6	15.9	1	29.4	752	16
Augusta	A2252 ↗	D	102	194.0	18.0	1	29.4	733	24
Golden Harvest	G00A97-AA ↗	AA	100	193.8	17.6	1	29.8	736	21
Integra	5225 TRERIB ↗	TRE	102	192.9	17.0	1	30.1	737	20
Wyffels	W2446RIB ↗	VT2P	100	191.9	16.0	1	29.8	741	18
Golden Harvest	G01U74-AA ↗	AA	101	191.8	18.6	1	29.8	720	30
DeKalb	DKC101-35RIB GC ↗	VT2P	101	191.8	16.5	1	29.8	736	22
Thunder	T6498 PC ↗	PCE	98	191.6	16.2	1	30.1	738	19
Thunder	T6500 VT2P ↗	VT2P	100	191.6	17.0	1	30.1	732	25
Heine	7291PWE ↗	PCE	102	191.4	17.4	1	29.8	728	26
Miller Hybrids	M00-75 ↗	CONV	100	189.9	17.1	1	29.8	724	29
Renk	RK597SSPRO ↗	STXP	99	189.7	15.8	1	30.1	734	23
Miller Hybrids	RX98-30 ↗	CONV	98	188.0	15.7	1	29.8	728	27
Renk	RK609VT2P ↗	VT2P	101	187.8	15.7	1	30.5	727	28
PIONEER	P05737V CK	VE	105	193.7	19.9	1	29.8	717	32
				Averages =	192.9	16.7	1	29.9	740
				LSD (0.10) =	9.8	0.8	ns		
				LSD (0.25) =	5.1	0.4	ns		
				C.V. =	5.6				
				Historic yield: 180.75 bu/a, 5 yr(s)					

Payden Peterson

Payden Peterson

payden.peterson@firstseedtests.com, (507) 461-2492

Yield & Income Factors:

Base Moisture = 15.0%

Shrink = 1.3

Drying = \$0.04

Prices: GMO = \$3.90

Report Date: 10/12/2024

† See last page for abbreviation descriptions. Dark colored row identifies the check product found in early- and full-season tests. **Bold** yields are significantly above test average by LSD(0.10). **Italicized** brands exceed the grain moisture limit for this test. **ns** = column values not significantly different. ↗ Links to full product yield results at www.firstseedtests.com

©2024, All rights reserved to Farmers' Independent Research of Seed Technologies, LLC.

Additional reports available at www.firstseedtests.com

Test by: Peterson Seed Testing LLC ,

2024 Corn Grain Top 30 Harvest Report

South Dakota Southeast [SDSE] TRENT, SD
Dean Jaycox, Moody County, SD

Full-Season Test	103 - 108 Day CRM B2024SDSE01b
Top 30 of 40	For Gross Income (Sorted by Yield) Average of (4) Replications
PREV. CROP/HERB:	Soybeans / Broadaxe, Sencor, Volunteer
SOIL DESCRIPTION:	Grovena-Bonilla loam, well drained, non-irrigated
SOIL CONDITION:	Conventional W/ Fall Till, very high P, very high K, 6.4 pH, 4.4% OM, 18.1 CEC
PEST MANAGEMENT:	Surestart, Callisto
FERTILITY - Applied N:	170 Fall
Applied N-P-K (units):	170-70-70
SEDED - RATE - ROW:	Apr 25 32.5 /A 30" spacing
HARVESTED - STAND:	Oct 10 30.1 /A

TEST COMMENTS:

This was a new site for the SDSE region. We were able to get it planted on April 25. Over 2 inches of rain came after planting, however the plot area could handle excess water quite well. Emergence was sufficient despite the cool and damp conditions. The weather pattern remained wet through the end of June, then turned dry into July and August. Dean commented the field around the plot made 195 bpa. Plants stood well at harvest, and stalk health was excellent.

Company/Brand	Product/Brand	Technol.†	RM	Yield Bu/A ↓	Moisture %	Lodging %	Stand (x 1000)	Gross Income \$/Acre	Rank
Wyffels	W5406RIB ↗	VT2P	108	225.8	25.2	1	30.1	788	2
Heine	7429PWERIB ↗	PCE	104	223.3	20.9	1	30.1	818	1
Heine	7761VT2PRIB ↗	VT2P	107	217.8	26.2	1	30.5	752	7
Viking Blue River	75-07 GC ↗	CONV	107	217.1	23.8	1	30.5	770	4
Integra	5443 DGVT2PRIB ↗	VT2PDG	104	215.7	22.6	1	30.1	775	3
Heine	7634PWERIB ↗	PCE	106	214.6	25.3	1	30.5	749	8
Thunder	T6507 PC ↗	PCE	107	211.5	25.6	1	30.0	735	11
Wyffels	W3579RIB ↗	STXP	105	210.9	22.3	1	30.5	761	6
Dairyland	DS-4488V ↗	VE	104	209.4	20.8	1	30.5	768	5
Rob-See-Co	RC5768-VT2P GC ↗	VT2P	107	208.8	25.2	1	30.5	729	13
Rob-See-Co	RC5430-DGVT2P GC ↗	VT2PDG	104	208.5	23.4	1	30.1	743	9
Miller Hybrids	M08-54 ↗	CONV	108	208.2	25.3	1	29.8	726	14
Renk	RK705VT4P ↗	VT4P	105	206.8	22.8	1	30.1	742	10
Renk	RK742VT2P ↗	VT2P	108	205.3	26.2	1	30.1	709	22
Dairyland	DS-4833AM ↗	AM	108	203.2	25.4	1	30.1	708	23
Augusta	A2356 ↗	PCE	106	202.8	24.1	1	30.5	717	18
Renk	RK720TRE ↗	TRE	106	201.5	24.3	1	29.8	711	20
Golden Harvest	G03U08-D ↗	D	103	200.4	21.0	1	30.1	733	12
Heine	7840PWERIB ↗	PCE	108	199.4	24.9	1	30.5	698	27
Viking Blue River	72-06 GC ↗	CONV	106	198.7	21.5	1	30.1	724	15
Integra	5802 VT2PRIB ↗	VT2P	108	198.5	25.9	1	30.1	688	30
Wyffels	W3309RIB ↗	STXP	103	196.8	22.2	1	29.8	711	21
Integra	5584 PCE ↗	PCE	105	195.7	20.8	1	29.4	718	16
Miller Hybrids	RX03-47 ↗	CONV	103	195.0	20.3	1	30.1	718	17
Wyffels	W3286RIB ↗	VT2P	103	194.7	20.8	1	30.1	714	19
Miller Hybrids	M06-62 ↗	CONV	106	194.2	23.0	1	29.8	695	29
Renk	RK625DGVT2P ↗	VT2PDG	104	194.1	22.7	1	30.1	697	28
Enestvedt	E514 ↗	CONV	104	194.0	21.6	1	30.1	705	24
Legacy	LC554-23 SSSX RIB GC ↗	STX	105	193.5	22.2	1	29.8	699	26
Dairyland	DS-4533PCE ↗	PCE	105	193.2	21.8	1	29.8	701	25
PIONEER	P05737V CK	VE	105	189.6	22.2	1	30.1	685	31
				Averages =	199.6	23.5	1	30.1	711
				LSD (0.10) =	13.2	1.2	ns		
				LSD (0.25) =	6.9	0.6	ns		
				C.V. =	7.3				
Payden Peterson				Historic yield: 180.75 bu/a, 5 yr(s)					

Payden Peterson

payden.peterson@firstseedtests.com, (507) 461-2492

Yield & Income Factors: Base Moisture = 15.0% Shrink = 1.3 Drying = \$0.04 Prices: GMO = \$3.90

Report Date: 10/12/2024

† See last page for abbreviation descriptions. Dark colored row identifies the check product found in early- and full-season tests. **Bold** yields are significantly above test average by LSD(0.10). **Italicized** brands exceed the grain moisture limit for this test. **ns** = column values not significantly different. ↗ Links to full product yield results at www.firstseedtests.com

©2024, All rights reserved to Farmers' Independent Research of Seed Technologies, LLC.

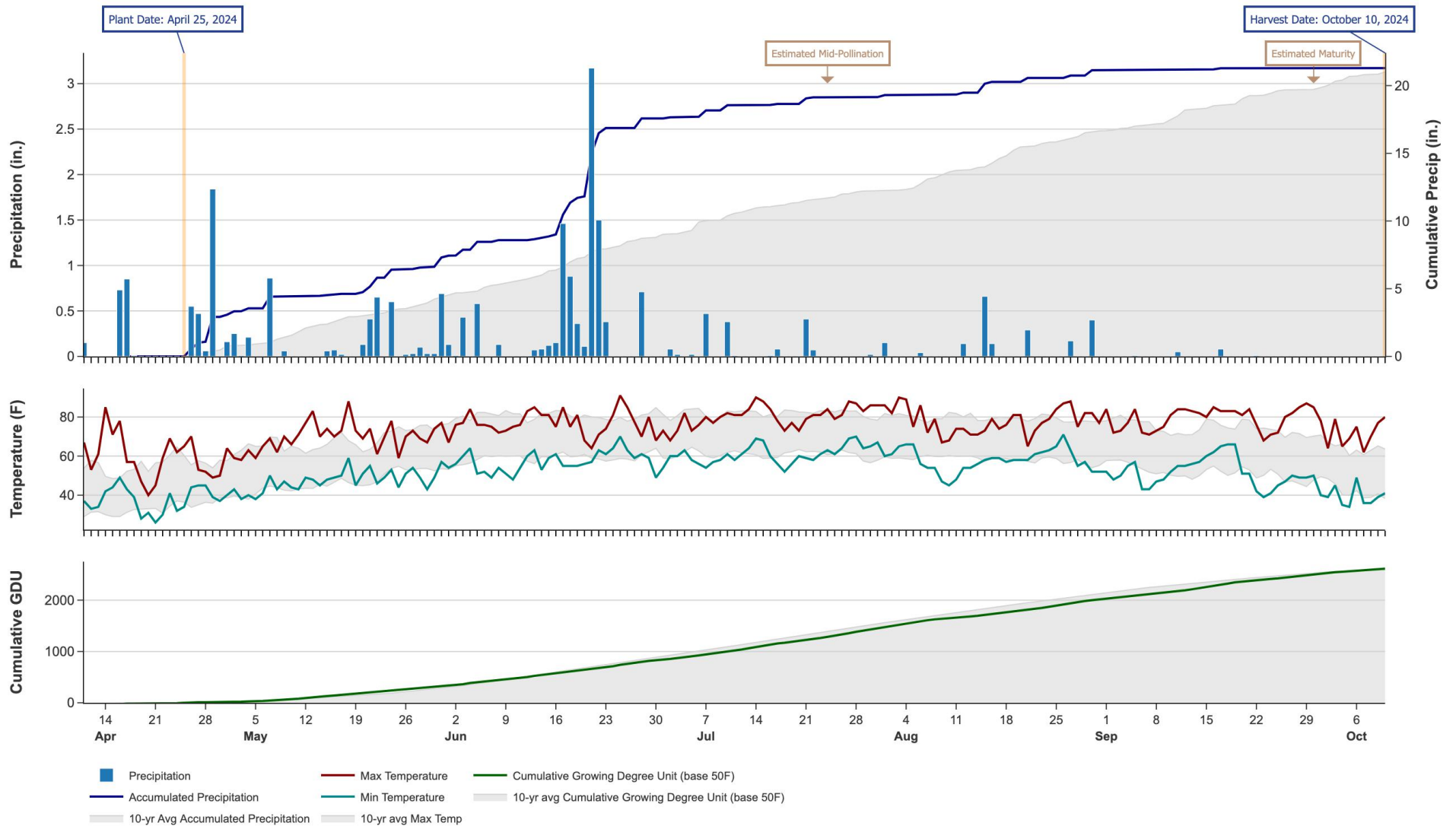
Additional reports available at www.firstseedtests.com

2024 Corn - South Dakota Southeast [SDSE]

Weather Conditions Summary at TRENT, SD

Weather Data Retrieved: 10/12/2024

Monthly Total	Apr*	May	Jun	Jul	Aug	Sep	Oct*	Total
Precip (in) (Diff)	4.7 1.8 (+2.9)	4.4 3.9 (+0.5)	10.3 4.4 (+5.8)	1.6 3.5 (-1.9)	2.0 4.4 (-2.4)	0.1 3.1 (-2.9)	0.0 1.3 (-1.3)	23.0 22.3 (+0.7)
GDU Avg (Diff)	81 7 (+73)	308 284 (+23)	508 592 (-84)	632 661 (-29)	556 588 (-32)	494 404 (+89)	104 67 (+36)	2683 2605 (+77)



* First monthly total starts on the date 14 days prior to planting and final monthly total ends on the harvest date.

Note: Weather information from PRISM Climate Group. Data may be revised by the provider after retrieval. FIRST will not revise or update reports to reflect any weather data changes. For information purposes only.

2024 Corn - South Dakota Southeast [SDSE]

Early-Season Test Products (40 Total)

Company/Brand	Product/Brand	Technology	RIB	RM	Seed Treat.
Augusta	A2252	D	N	102	CM,C2
Augusta	A2351	AA	Y	101	CM,C2
Dairyland	DS-3881V	VE	Y	98	Lum, L1
Dairyland	DS-4191V	VE	Y	101	Lum, L1
DeKalb	DKC101-35RIB GC	VT2P	Y	101	AC,P5V
Golden Harvest	G00A97-AA	AA	Y	100	CM,C5,Vi,Va
Golden Harvest	G01U74-AA	AA	Y	101	CM,C1,Vi,Va
Golden Harvest	G98B99-AA GC	AA	Y	98	CM,C5,Vi,Va
Heine	6650TRERIB	TRE	N	99	F,I,B,NE,NU
Heine	7025VT2PRIB	VT2P	Y	100	F,I,B,NE,NU
Heine	7053VT2PRIB	VT2P	Y	100	F,I,B,NE,NU
Heine	7291PWE	PCE	Y	102	F,I,B,NE,NU
Heine	7480DGV2PRIB	VT2PDG	Y	102	F,I,B,NE,NU
Integra	4845PCE	PCE	Y	98	AC,P5V,St,SU
Integra	4993 TRERIB	TRE	N	99	AC,P5V,St,SU
Integra	5055 VT4PRIB	VT4P	Y	100	AC,P5V,St,SU
Integra	5225 TRERIB	TRE	Y	102	AC,P5V,St,SU
Legacy	LC494-23 PCE RA GC	PCE	Y*	99	CM,C2,Vi,Va
Miller Hybrids	M00-75	CONV	N	100	MSC
Miller Hybrids	M02-06PC	PCE	Y	102	MSC
Miller Hybrids	RX00-58	CONV	N	100	MSC
Miller Hybrids	RX98-30	CONV	N	98	CM,C2,Vi,Va
Pioneer	P05737V CK	VE	Y	105	Lum
Pioneer	P97299PCE GC	PCE	Y	97	Lum
Renk	RK579DGV2P	VT2PDG	Y	99	AC,P2
Renk	RK586VT4P	VT4P	N	99	AC,P5V,EDC-EL
Renk	RK597SSPRO	STXP	Y*	99	AC,P5V,EDC-EL
Renk	RK609VT2P	VT2P	Y	101	AC,P2
Renk	RK628VT2P	VT2P	Y*	102	AC,P2
Thunder	T6498 PC	PCE	N	98	CM,C2,Vi,Va
Thunder	T6500 VT2P	VT2P	Y	100	AC,P2
Thunder	T6501 AA	AA	Y	101	F,I
Thunder	T8502 DC	D	Y	102	F,I
Thunder	T8598 SS	STX	Y	98	F,I
Viking Blue River	24-01	CONV	N	101	CM,C2
Viking Blue River	24-99	CONV	N	99	CM,C2
Wyffels	W1869	STXP	N	97	AC,P5V
Wyffels	W1996RIB	VT2P	Y*	98	CM,C2,Vi,Va
Wyffels	W2386	VT2P	N	100	AC,P5V
Wyffels	W2446RIB	VT2P	Y*	100	CM,C2,Vi,Va

* FIRST does not inspect products for refuge blend. N* indicates the product was entered without a refuge component by the sponsoring seed company. Prior year entries may contain refuge blend.

2024 Corn - South Dakota Southeast [SDSE]

Full-Season Test Products (40 Total)

Company/Brand	Product/Brand	Technology	RIB	RM	Seed Treat.
Augusta	A2356	PCE	N	106	CM,C2
Augusta	A2357	V	N	107	CM,C2
Dairyland	DS-4488V	VE	Y	104	Lum, L1
Dairyland	DS-4533PCE	PCE	Y	105	Lum, L1
Dairyland	DS-4833AM	AM	Y	108	Lum
Enestvedt	E514	CONV	N	104	AC,P5V
Enestvedt	E541	CONV	N	106	CM,C2,Vi
Golden Harvest	G03U08-D	D	Y	103	CM,C1,Vi,Va
Golden Harvest	G08U00-V	V	Y	108	CM,C1,Vi,Va
Heine	7429PWERIB	PCE	Y	104	F,I,B,NE,NU
Heine	7634PWERIB	PCE	Y	106	F,I,B,NE,NU
Heine	7761VT2PRIB	VT2P	Y	107	F,I,B,NE,NU
Heine	7840PWERIB	PCE	Y	108	F,I,B,NE,NU
Heine	795VT2PRIB	VT2P	Y	108	F,I,B,NE,NU
Integra	5443 DGVT2PRIB	VT2PDG	N	104	AC,P5V,St,SU
Integra	5584 PCE	PCE	Y*	105	AC,P5V,St,SU
Integra	5802 VT2PRIB	VT2P	Y	108	AC,P5V,St,SU
Legacy	LC554-23 SXX RIB GC	STX	Y*	105	P5V
Miller Hybrids	M06-62	CONV	N	106	MSC
Miller Hybrids	M08-54	CONV	N	108	MSC
Miller Hybrids	RX03-47	CONV	N	103	MSC
Pioneer	P05737V CK	VE	Y	105	Lum
Renk	RK625DGVT2P	VT2PDG	Y*	104	AC,P2
Renk	RK703PCE	PCE	Y*	106	Lum
Renk	RK705VT4P	VT4P	N	105	AC,P5V,EDC-EL
Renk	RK720TRE	TRE	Y*	106	AC,P2
Renk	RK742VT2P	VT2P	N	108	AC,P5V,EDC-EL
Rob-See-Co	RC5430-DGVT2P GC	VT2PDG	Y	104	AC,P2
Rob-See-Co	RC5768-VT2P GC	VT2P	Y	107	CM,C2,Vi,Va
Thunder	T2504 CONV	CONV	N	104	AC,P5V
Thunder	T6306 PC	PCE	Y	106	CM,C2,Vi,Va
Thunder	T6504 PC	PCE	Y	104	F,I
Thunder	T6507 PC	PCE	Y	107	F,I
Thunder	T6509 AV	V	Y	108	F,I
Viking Blue River	72-06 GC	CONV	N	106	CM,C2
Viking Blue River	75-07 GC	CONV	N	107	CM,C2
Wyffels	W3286RIB	VT2P	Y*	103	CM,C2,Vi,Va
Wyffels	W3309RIB	STXP	Y*	103	CM,C2,Vi,Va
Wyffels	W3579RIB	STXP	Y*	105	CM,C2,Vi,Va
Wyffels	W5406RIB	VT2P	Y*	108	CM,C2,Vi,Va

* FIRST does not inspect products for refuge blend. N* indicates the product was entered without a refuge component by the sponsoring seed company. Prior year entries may contain refuge blend.

Footnotes and Abbreviations Descriptions

Brand Footnotes

CK	Identifies a check product included in early- and full-season tests.
GC	Grower Comparison product included by FIRST when space permits.
^	Innotech™ brand seed is distributed by Rob-See-Co, LLC. Innotech™ is a trademark of Syngenta. Power Plus® brand seed is distributed by Burrus. Power Plus® is a registered trademark of Corteva Agriscience.

Corn Technologies

AA	Agrisure® Above (CB,HX,LL,GT), formerly Agrisure® 3120
AM	Optimum® AcreMax®
CONV	Conventional
D	Duracade™ (CB,HX,RW,RW2,LL,GT), formerly Agrisure Duracade® 5122
PCE	PowerCore® Enlist®
STX	SmartStax®
STXP	SmartStax® Pro with RNAi Technology
TRE	Trecepta®
V	Viptera™ (Vip,CB,HX,LL,GT), formerly Agrisure Viptera® 3220
VE	Vorceed™ Enlist®
VT2P	VT Double PRO®
VT2PDG	DroughtGard® with VT Double PRO®
VT4P	VT4Pro™ with RNAi Technology

NOTE: The refuge component genetics may vary in a refuge blend seed product.

Corn Seed Treatments*

NA	Not Available
AC,P2	Acceleron® 250
AC,P5V	Acceleron® Poncho 500/Votivo
AC,P5V,EDC-EL	Acceleron® ELITE Poncho 500/Votivo with Enhanced Disease Control
AC,P5V,St,SU	Acceleron® Poncho 500/Votivo, Stamina, StepUp
CM,C1,Vi,Va	CruiserMaxx® 1250 with Vibrance, Vayantis®
CM,C2	CruiserMaxx® 250
CM,C2,Vi	CruiserMaxx® 250 with Vibrance
CM,C2,Vi,Va	CruiserMaxx® 250 with Vibrance, Vayantis®
CM,C5,Vi,Va	CruiserMaxx® 500 with Vibrance, Vayantis®
F,I	Fungicide, Insecticide
F,I,B,NE,NU	Fungicide, Insecticide, Biological, Nematicide, Nutrition
Lum	LumiGEN™ (Corteva Agriscience)
Lum, L1	LumiGEN, Lumisure 1250
MSC	Miller Hybrids ShieldCoat™ with Vertex
P5V	Poncho 500/Votivo

*Seed treatments may include unspecified plant health promoting components.