

Test by: M&D Seed Research, LLC Van Buren, IN

2024 Corn Grain Top 30 Harvest Report

Michigan South [MISO] RIGA, MI
Bill Bierman, Lenawee County, MI 49276

Early-Season Test	97 - 103 Day CRM B2024MISO01a
Top 30 of 40	For Gross Income (Sorted by Yield) Average of (4) Replications
PREV. CROP/HERB:	Corn / Lexar, Roundup
SOIL DESCRIPTION:	Nappanee silt loam, moderately drained, non-irrigated
SOIL CONDITION:	No-Till, medium P, medium K, 7.1 pH, 3.0% OM, 14.6 CEC
PEST MANAGEMENT:	Lexar Ez, Miravis Fungicide, Tombstone Insecticide
FERTILITY - Applied N:	230 Sidedress
Applied N-P-K (units):	230-53-180
SEEDED - RATE - ROW:	May 16 33.6 /A 30" spacing
HARVESTED - STAND:	Oct 30 31.3 /A

TEST COMMENTS:

This is a corn-on-corn, no-till site that is very uniform and has good fertility and drainage with a good history of high yields. The site was planted in mid-May but did experience some emergence issues due to rains after planting. Plants grew well with thinner populations still yielding well. Dry weather late season kept kernel disease pressure low. It was standing nicely at harvest and shelled well.

Company/Brand	Product/Brand	Technol.†	RM	Yield Bu/A ↓	Moisture %	Lodging %	Stand (x 1000)	Gross Income \$/Acre	Rank
Augusta	A2152 ↗	TRE	102	206.4	16.7	1	32.5	739	1
M & W Seeds	MW A96 PWR ↗	PCE	96	198.0	17.0	1	32.1	707	2
Wyckoff	2336 TRE RIB ↗	TRE	103	197.1	17.0	1	30.7	704	3
Channel	200-42VT2PRIB ↗	VT2P	100	196.8	17.0	1	32.1	703	4
Dyna-Gro	D39VT75RIB ↗	VT4P	99	195.2	16.5	1	30.7	701	5
Dairyland	DS-3730PCE ↗	PCE	97	193.9	16.1	1	31.0	699	6
Channel	198-21VT2PRIB ↗	VT2P	98	191.7	16.1	1	31.4	691	7
Wyckoff	2299 TRE RIB ↗	TRE	102	191.5	16.7	1	31.6	686	8
FS InVision	FS 5035P RIB ↗	STXP	100	191.1	16.7	1	30.4	685	9
Integra	4993 TRERIB ↗	TRE	99	187.0	16.5	1	32.8	672	10
FS InVision	FS 5145L1 EZR ↗	AA	101	186.8	17.1	1	31.4	666	14
Dyna-Gro	D41TC74RIB ↗	TRE	101	186.1	16.5	1	29.7	668	11
Renk	RK586VT4P ↗	VT4P	99	186.1	16.5	1	30.4	668	12
M & W Seeds	MW 46T29 ↗	VT2P	99	186.0	16.4	1	30.4	668	13
Channel	203-08VT2PRIB ↗	VT2P	103	184.8	16.7	1	32.5	662	15
Renk	RK597SSPRO ↗	STXP	99	183.4	16.5	1	31.1	658	16
M & W Seeds	MW 103A VT2P ↗	VT2P	103	182.9	17.0	1	30.7	653	18
Legacy	LC531-24 ↗	VT4P	103	182.8	16.9	1	32.1	653	19
FS InVision	FS 5147T RIB ↗	TRE	101	182.7	17.0	1	30.4	652	20
FS InVision	FS 4927T RIB ↗	TRE	99	182.5	16.3	1	32.4	657	17
FS InVision	FS 5335P RIB ↗	STXP	103	181.7	17.0	1	29.7	648	22
Dairyland	DS-4191V ↗	VE	101	181.1	16.9	1	31.6	647	23
Renk	RK609VT2P ↗	VT2P	101	181.0	16.3	1	32.8	651	21
Renk	RK628VT2P ↗	VT2P	102	180.7	16.8	1	29.7	647	24
Wyckoff	2318 D ↗	D	103	177.0	17.9	1	32.1	626	27
Augusta	A2252 ↗	D	102	176.2	17.6	1	33.2	625	28
Wyckoff	2175 SSP ↗	STXP	97	175.3	16.3	1	30.7	631	25
NK Brand	NK9771-DV ↗	DV	97	175.1	16.7	1	32.1	627	26
Integra	4845PCE ↗	PCE	98	174.0	16.6	1	31.4	623	29
NK Brand	NK0123-AA ↗	AA	101	173.6	16.8	1	31.1	621	30
PIONEER	P0306AM CK	AM,AQ	103	160.7	17.5	1	30.4	570	40
				Averages =	181.5	16.8	1	31.3	650
				LSD (0.10) =	14.6	0.5	ns		
				LSD (0.25) =	7.6	0.3	ns		
				C.V. =	8.8				
				Historic yield: 196.22 bu/a, 16 yr(s)					

Matt Turner

mattturner1979@yahoo.com, (317) 606-9040

Yield & Income Factors: Base Moisture = 15.0% Shrink = 1.3 Drying = \$0.04 Prices: GMO = \$3.65; non-GMO = \$3.65

Report Date: 10/30/2024

† See last page for abbreviation descriptions. Dark colored row identifies the check product found in early- and full-season tests. **Bold** yields are significantly above test average by LSD(0.10). **Italicized** brands exceeded the grain moisture limit for this test. **ns** = column values not significantly different. ↗ Links to full product yield results at www.firstseedtests.com

©2024, All rights reserved to Farmers' Independent Research of Seed Technologies, LLC.

Additional reports available at www.firstseedtests.com

Test by: M&D Seed Research, LLC Van Buren, IN

2024 Corn Grain Top 30 Harvest Report

Michigan South [MISO] RIGA, MI
Bill Bierman, Lenawee County, MI 49276

Full-Season Test	104 - 108 Day CRM B2024MISO01b
Top 30 of 32	For Gross Income (Sorted by Yield) Average of (4) Replications
PREV. CROP/HERB:	Corn / Lexar, Roundup
SOIL DESCRIPTION:	Nappanee silt loam, moderately drained, non-irrigated
SOIL CONDITION:	No-Till, medium P, medium K, 7.1 pH, 3.0% OM, 14.6 CEC
PEST MANAGEMENT:	Lexar Ez, Miravis Fungicide, Tombstone Insecticide
FERTILITY - Applied N:	230 Sidedress
Applied N-P-K (units):	230-53-180
SEEDED - RATE - ROW:	May 16 33.6 /A 30" spacing
HARVESTED - STAND:	Oct 30 31.7 /A

TEST COMMENTS:

This is a corn-on-corn, no-till site that is very uniform and has good fertility and drainage with a good history of high yields. The site was planted in mid-May but did experience some emergence issues due to rains after planting. Plants grew well with thinner populations still yielding well. Dry weather late season kept kernel disease pressure low. It was standing nicely at harvest and shelled well.

Company/Brand	Product/Brand	Technol.†	RM	Yield Bu/A ↓	Moisture %	Lodging %	Stand (x 1000)	Gross Income \$/Acre	Rank
Wyckoff	2487 PCE ↗	PCE	106	241.9	19.4	1	31.0	840	1
Dairyland	DS-4533PCE ↗	PCE	105	236.0	17.7	1	33.0	836	2
NK Brand	NK0880-V ↗	V	108	232.3	18.8	1	31.8	812	3
Dairyland	DS-4488PCE ↗	PCE	104	223.2	18.3	1	31.4	785	4
Dyna-Gro	D44PN25RA ↗	PCE	104	222.1	18.5	2	31.1	780	5
Integra	5802 VT2PRIB ↗	VT2P	108	221.3	19.4	1	32.8	769	8
M & W Seeds	MW F108 PWR ↗	PCE	108	219.5	18.0	1	31.8	775	6
Dairyland	DS-4833AM ↗	AM	108	218.7	18.8	1	31.4	765	12
M & W Seeds	MW A107 PWR ↗	PCE	107	218.6	18.3	1	32.6	769	9
M & W Seeds	MW C104 PWR ↗	PCE	104	217.7	18.2	1	31.8	767	11
Wyckoff	2396 PCE ↗	PCE	104	217.5	18.0	1	33.0	768	10
M & W Seeds	MW D108 PWR ↗	PCE	108	217.4	20.6	1	32.1	745	15
Renk	RK705VT4P ↗	VT4P	105	216.6	17.1	1	32.1	772	7
Renk	RK625DGV2P ↗	VT2PDG	104	212.9	16.6	1	32.1	763	13
Integra	5443 DGV2PRIB ↗	VT2PDG	104	210.5	16.2	1	31.8	759	14
Channel	205-08TRECRIB ↗	TRE	105	206.6	17.6	1	32.1	733	16
Legacy	LC572-22 ↗	STX	107	204.6	16.9	1	32.1	731	17
FS InVision	FS 5725X RIB ↗	STX	107	203.0	17.0	1	31.8	725	18
Channel	207-87VT2PRIB ↗	VT2P	107	202.9	18.4	1	31.4	712	19
Integra	5584 PCE ↗	PCE	105	199.2	18.3	1	30.4	701	21
Renk	RK703PCE ↗	PCE	106	198.8	17.9	1	32.5	703	20
Wyckoff	2432 TRE RIB ↗	TRE	105	195.6	17.9	1	31.8	691	22
Channel	204-54TRECRIB ↗	TRE	104	192.7	17.3	1	31.8	686	23
FS InVision	FS 5845P RIB ↗	STXP	108	192.6	17.6	1	31.4	683	24
Wyckoff	2574 TRE RIB ↗	TRE	108	192.0	19.9	1	31.4	663	30
Renk	RK742VT2P ↗	VT2P	108	190.8	18.5	1	30.3	669	27
FS InVision	FS 5835V RIB ↗	VT2P	108	190.3	18.2	1	31.8	670	26
FS InVision	FS 5525VDG RIB ↗	VT2PDG	105	190.0	16.4	1	32.5	683	25
M & W Seeds	MW 44V42 ↗	VT2P	107	188.3	18.1	1	31.1	664	29
Channel	208-62VT2PRIB ↗	VT2P	108	188.1	17.5	1	31.0	668	28
PIONEER	P0306AM CK	AM,AQ	103	174.7	17.4	1	31.4	621	32
				Averages =	207.1	18.0	1	31.7	730
				LSD (0.10) =	16.1	0.7	ns		
				LSD (0.25) =	8.4	0.4	ns		
				C.V. =	8.5				
				Historic yield: 196.22 bu/a, 16 yr(s)					

Matt Turner

mattturner1979@yahoo.com, (317) 606-9040

Yield & Income Factors: Base Moisture = 15.0% Shrink = 1.3 Drying = \$0.04 Prices: GMO = \$3.65; non-GMO = \$3.65

Report Date: 10/30/2024

† See last page for abbreviation descriptions. Dark colored row identifies the check product found in early- and full-season tests. **Bold** yields are significantly above test average by LSD(0.10). **Italicized** brands exceeded the grain moisture limit for this test. **ns** = column values not significantly different. ↗ Links to full product yield results at www.firstseedtests.com

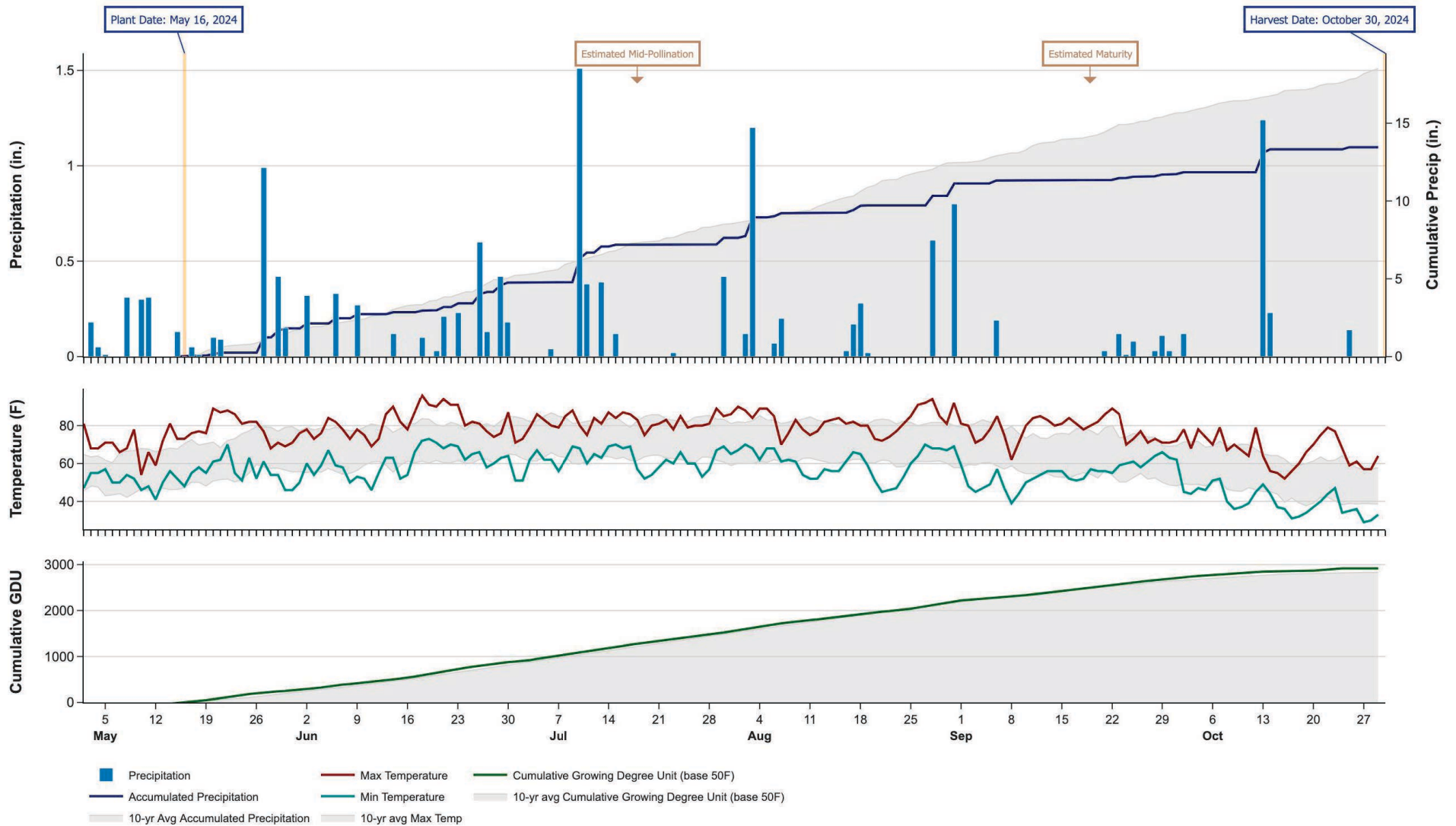
©2024, All rights reserved to Farmers' Independent Research of Seed Technologies, LLC.

Additional reports available at www.firstseedtests.com

2024 Corn - Michigan South [MISO]

Weather Conditions Summary at RIGA, MI

Monthly Total	May*	Jun	Jul	Aug	Sep	Oct*	Total
Precip (in) (Diff)	3.1 3.8 (-0.7)	2.9 3.4 (-0.4)	2.9 3.5 (-0.6)	3.5 3.9 (-0.4)	0.6 3.1 (-2.5)	1.7 3.0 (-1.2)	14.8 20.6 (-5.9)
GDU Avg (Diff)	428 334 (+93)	616 584 (+31)	670 710 (-40)	650 662 (-12)	500 470 (+29)	218 183 (+34)	3082 2946 (+135)



* First monthly total starts on the date 14 days prior to planting and final monthly total ends on the harvest date.

Note: Weather information from PRISM Climate Group. Data may be revised by the provider after retrieval. FIRST will not revise or update reports to reflect any weather data changes. For information purposes only.

2024 Corn - Michigan South [MISO]

Early-Season Test Products (40 Total)

Company/Brand	Product/Brand	Technology	RIB	RM	Seed Treat.
Augusta	A2152	TRE	N	102	AC,P5V
Augusta	A2252	D	N	102	CM,C2
Channel	198-21VT2PRIB	VT2P	Y	98	AC,P5V,EDC-B
Channel	198-70TRECIB	TRE	Y	98	AC,P5V,EDC-EL
Channel	200-42VT2PRIB	VT2P	Y	100	AC,P5V,EDC-B
Channel	203-08VT2PRIB	VT2P	Y	103	AC,P5V,EDC-B
Dairyland	DS-3730PCE	PCE	Y	97	Lum, L1
Dairyland	DS-4191V	VE	Y	101	Lum, L1
Dyna-Gro	D39VT75RIB	VT4P	Y	99	AC,P5V
Dyna-Gro	D41TC74RIB	TRE	Y*	101	AC,P5V
FS InVision	FS 4927T RIB	TRE	Y	99	AC,P5V
FS InVision	FS 5035P RIB	STXP	N	100	AC,P5V
FS InVision	FS 5145L1 EZR	AA	Y	101	CM,C2,Vi,Va
FS InVision	FS 5147T RIB	TRE	Y	101	AC,P5V
FS InVision	FS 5335P RIB	STXP	Y	103	AC,P5V
Integra	4845PCE	PCE	Y	98	AC,P5V,St,SU
Integra	4993 TRERIB	TRE	N	99	AC,P5V,St,SU
Integra	5225 TRERIB	TRE	Y	102	AC,P5V,St,SU
Legacy	LC471-23	TRE	N	97	P5V
Legacy	LC531-24	VT4P	Y*	103	AC,P5
M & W Seeds	MW 103A VT2P	VT2P	Y	103	Treated
M & W Seeds	MW 46T29	VT2P	Y	99	Treated
M & W Seeds	MW A96 PWR	PCE	Y	96	Treated
M & W Seeds	MW D96 PWR	PCE	Y	96	Treated
M & W Seeds	MW F102 TRE	TRE	Y	102	Treated
NK Brand	NK0123-AA	AA	Y	101	CM,C1,Vi,Va
NK Brand	NK0252-D	D	Y	102	CM,C5,Vi,Va
NK Brand	NK0367-AA	AA	Y	103	CM,C5,Vi,Va
NK Brand	NK9771-DV	DV	Y	97	CM,C5,Vi,Va
Pioneer	P0306AM CK	AM,AQ	Y	103	Lum
Renk	RK579DGV2P	VT2PDG	Y	99	AC,P2
Renk	RK586VT4P	VT4P	N	99	AC,P5V,EDC-EL
Renk	RK597SSPRO	STXP	Y*	99	AC,P5V,EDC-EL
Renk	RK609VT2P	VT2P	Y	101	AC,P2
Renk	RK628VT2P	VT2P	Y*	102	AC,P2
Wyckoff	2160 PCE	PCE	Y	98	CM,C2,Vi,Va
Wyckoff	2175 SSP	STXP	Y	97	AC,P5V
Wyckoff	2299 TRE RIB	TRE	Y	102	AC,P2
Wyckoff	2318 D	D	Y	103	CM,C2,Vi,Va
Wyckoff	2336 TRE RIB	TRE	Y	103	AC,P2

* FIRST does not inspect products for refuge blend. N* indicates the product was entered without a refuge component by the sponsoring seed company. Prior year entries may contain refuge blend.

2024 Corn - Michigan South [MISO]

Full-Season Test Products (32 Total)

Company/Brand	Product/Brand	Technology	RIB	RM	Seed Treat.
Channel	204-54TRECRI	TRE	Y	104	AC,P5V,EDC-EL
Channel	205-08TRECRI	TRE	Y	105	AC,P5V,EDC-EL
Channel	207-87VT2PRIB	VT2P	Y	107	AC,P5V,EDC-B
Channel	208-62VT2PRIB	VT2P	Y	108	AC,P5V,EDC-B
Dairyland	DS-4488PCE	PCE	Y	104	Lum, L1
Dairyland	DS-4533PCE	PCE	Y	105	Lum, L1
Dairyland	DS-4833AM	AM	Y	108	Lum
Dyna-Gro	D44PN25RA	PCE	Y	104	AC,P5V
FS InVision	FS 5525VDG RIB	VT2PDG	Y	105	AC,P5V
FS InVision	FS 5725X RIB	STX	Y	107	AC,P5V
FS InVision	FS 5835V RIB	VT2P	Y	108	AC,P5V
FS InVision	FS 5845P RIB	STXP	Y	108	AC,P5V
Integra	5443 DGVT2PRIB	VT2PDG	N	104	AC,P5V,St,SU
Integra	5584 PCE	PCE	Y*	105	AC,P5V,St,SU
Integra	5802 VT2PRIB	VT2P	Y	108	AC,P5V,St,SU
Legacy	LC572-22	STX	N	107	AC,P5
M & W Seeds	MW 44V42	VT2P	Y	107	Treated
M & W Seeds	MW A107 PWR	PCE	Y	107	Treated
M & W Seeds	MW C104 PWR	PCE	Y	104	Treated
M & W Seeds	MW D108 PWR	PCE	Y	108	Treated
M & W Seeds	MW F108 PWR	PCE	Y*	108	Treated
NK Brand	NK0880-V	V	Y	108	CM,C1,Vi,Va
Pioneer	P0306AM CK	AM,AQ	Y	103	Lum
Renk	RK625DGV2P	VT2PDG	Y*	104	AC,P2
Renk	RK703PCE	PCE	Y*	106	Lum
Renk	RK705VT4P	VT4P	N	105	AC,P5V,EDC-EL
Renk	RK720TRE	TRE	Y*	106	AC,P2
Renk	RK742VT2P	VT2P	N	108	AC,P5V,EDC-EL
Wyckoff	2396 PCE	PCE	Y	104	CM,C2,Vi,Va
Wyckoff	2432 TRE RIB	TRE	Y	105	AC,P2
Wyckoff	2487 PCE	PCE	Y	106	CM,C2,Vi,Va
Wyckoff	2574 TRE RIB	TRE	Y	108	AC,P2

* FIRST does not inspect products for refuge blend. N* indicates the product was entered without a refuge component by the sponsoring seed company. Prior year entries may contain refuge blend.

Footnotes and Abbreviations Descriptions

Brand Footnotes

CK	Identifies a check product included in early- and full-season tests.
GC	Grower Comparison product included by FIRST when space permits.
^	Innotech™ brand seed is distributed by Rob-See-Co, LLC. Innotech™ is a trademark of Syngenta. Power Plus® brand seed is distributed by Burrus. Power Plus® is a registered trademark of Corteva Agriscience.

Corn Technologies

AA	Agrisure® Above (CB,HX,LL,GT), formerly Agrisure® 3120
AM	Optimum® AcreMax®
AQ	Optimum® AQUAmax®
D	Duracade™ (CB,HX,RW,RW2,LL,GT), formerly Agrisure Duracade® 5122
DV	DuracadeViptera™ (Vip,CB,HX,RW,RW2,LL,GT), formerly Agrisure Duracade® 5222
PCE	PowerCore® Enlist®
STX	SmartStax®
STXP	SmartStax® Pro with RNAi Technology
TRE	Trecepta®
V	Viptera™ (Vip,CB,HX,LL,GT), formerly Agrisure Viptera® 3220
VE	Vorceed™ Enlist®
VT2P	VT Double PRO®
VT2PDG	DroughtGard® with VT Double PRO®
VT4P	VT4Pro™ with RNAi Technology

NOTE: The refuge component genetics may vary in a refuge blend seed product.

Corn Seed Treatments*

NA	Not Available
AC,P2	Acceleron® 250
AC,P5	Acceleron® 500
AC,P5V	Acceleron® Poncho 500/Votivo
AC,P5V,EDC-B	Acceleron® BASIC Poncho 500/Votivo with Enhanced Disease Control
AC,P5V,EDC-EL	Acceleron® ELITE Poncho 500/Votivo with Enhanced Disease Control
AC,P5V,St,SU	Acceleron® Poncho 500/Votivo, Stamina, StepUp
CM,C1,Vi,Va	CruiserMaxx® 1250 with Vibrance, Vayantis®
CM,C2	CruiserMaxx® 250
CM,C2,Vi,Va	CruiserMaxx® 250 with Vibrance, Vayantis®
CM,C5,Vi,Va	CruiserMaxx® 500 with Vibrance, Vayantis®
Lum	LumiGEN™ (Corteva Agriscience)
Lum, L1	LumiGEN, Lumisure 1250
P5V	Poncho 500/Votivo
Treated	Treated seed, unspecified

* Seed treatments may include unspecified plant health promoting components.