

Test by: Southern MN FIRST New Richland, MN

2023 Soybeans Top 30 Harvest Report

Minnesota South Conventional Specialty [MNSOCV] AUSTIN, MN

Jarred Ellis, Mower County, MN

All-Season Test	Maturity Group 1.4 - 2.3 S2023MNSOCV10
Top 30 of 36	For Gross Income (Sorted by Yield) Average of (3) Replications
PREV. CROP/HERB:	Corn, Rye Cover Crop / Harness, Armezon
SOIL DESCRIPTION:	Sargeant silt loam, mod. poorly drained, non-irrigated
SOIL CONDITION:	high P, very high K, 5.6 pH, 1.7% OM, 11.9 CEC
TILLAGE/CULTIVATION:	No-Till
PEST MANAGEMENT:	Zone Assist, Warrant Ultra
Applied N-P-K (units):	0-0-0
SEEDED - RATE - ROW:	May 22 130.0 /A 30" spacing
HARVESTED - STAND:	Oct 8 107.6 /A

TEST COMMENTS:

A wet spring delayed planting here, and the soil was full of moisture at planting time. Rye cover crop and no-till preserved some soil moisture. However, as Jarrod reminded me, his farm was at the center of the "Extreme Drought" map in southeast MN by Sept 15th. Rainfall from May 15 to September 15 totaled 4.1" here. Plants were 20-30" tall at harvest, and the rows did not canopy. Jarrod's field around the plot yielded 19 bpa. Disease, pest, and weed pressure were very low.

Company/Brand	Product/Brand	Technol.†	RM	SCN Resist.	Yield Bu/A ↓	Moisture %	Lodging %	Stand (x 1000)	Gross Income \$/Acre	Rank
Virtue	C3015 (2122) § ↗	CONV	2.1	NA	25.0	9.2	0	108.0	381	1
Viking	1700N ↗	CONV	1.7	NA	22.3	8.5	0	105.3	340	2
Pioneer	P19A37E § ↗	E3	1.9	NA	21.4	8.8	0	107.7	273	16
Viking	2155N ↗	CONV	2.1	MR	21.3	8.8	0	105.3	325	3
Viking	1718N ↗	CONV	1.7	MR	21.2	9.4	0	107.0	323	4
Brushvale	BS1512 § ↗	CONV	1.4	NA	21.1	9.2	0	107.0	322	5
Viking	IAS19C3 ↗	CONV	2.1	MR	20.9	8.8	0	109.0	319	6
Asgrow	AG18XF1 § ↗	RXF	1.8	R	20.8	8.9	0	105.7	265	19
Asgrow	AG21XF2 § ↗	RXF	2.1	R	20.7	8.9	0	111.7	264	21
Stine	20EG02 § ↗	E3	2.0	R	20.7	9.3	0	105.7	264	22
Pioneer	P15A20 § ↗	CONV	1.5	R	20.5	8.9	0	109.3	313	7
Golden Harvest	GH2292E3 § ↗	E3	2.2	MR	20.3	9.0	0	110.7	259	23
DF Seeds	DF 187 N ↗	CONV	1.8	R	20.0	8.9	0	105.7	305	8
DF Seeds	DF 174 N ↗	CONV	1.7	S	19.9	8.7	0	107.0	303	9
Sevita	SVX20T2S24 ↗	CONV	2.4	R	19.6	9.1	0	105.3	299	10
Virtue	V1821 § ↗	CONV	1.8	NA	19.3	8.7	0	105.7	294	11
Grain Millers	GSP 17 ↗	CONV	1.7	S	19.1	8.9	0	110.7	291	12
Pioneer	P11A50 § ↗	CONV	1.1	R	18.5	9.5	0	105.3	282	13
Asgrow	AG19XF3 § ↗	RXF	1.9	R	18.2	9.0	0	109.3	232	28
Sevita	CANDOR ↗	CONV	1.9	NA	18.2	8.8	0	107.3	278	14
Pioneer	P21A20 § ↗	CONV	2.1	R	18.0	9.2	0	106.7	274	15
Brushvale	BS1146 GC ↗	CONV	1.2	R	17.6	9.6	0	105.7	268	17
Brushvale	BS1940 § ↗	CONV	1.9	NA	17.5	9.1	0	107.0	267	18
Sevita	ROWAN ↗	CONV	2.0	R	17.4	8.9	0	109.3	265	20
Sevita	ODESSA ↗	CONV	1.1	S	16.8	9.4	0	109.0	256	24
MNCIA	M07-297007HOLL-1 ↗	CONV	1.9	NA	16.6	8.8	0	107.7	253	25
MNCIA	M07-297007HOLL-4 ↗	CONV	1.7	NA	16.5	8.4	0	110.0	252	26
DF Seeds	DF 193 F ↗	CONV	1.9	S	15.6	9.6	0	107.0	238	27
Viking	2022N ↗	CONV	2.0	MR	15.1	7.8	0	109.3	230	29
MNCIA	M10-238-2036 (MN1510HO) ↗	CONV	1.5	NA	15.0	9.0	0	105.3	229	30

Mark Querna

mark.querna@firstseedtests.com, (507) 380-9920

Averages = **18.4** **8.9** **107.6** **268**

LSD (0.10) = 2.5 0.5 ns

LSD (0.25) = 1.3 0.2 ns

C.V. = 12.7

Historic yield: 44.7 bu/a, 1 yr(s)

Yield & Income Factors: Base Moisture = 13.0% Shrink = 1.0 Drying = \$0.02 Prices: GMO = \$12.75; non-GMO = \$15.25

Report Date: 10/09/2023

† See last page for abbreviation descriptions. Dark colored row identifies the check product found in early- and full-season tests. **Bold** yields are significantly above test average by LSD(0.10). **Italicized** brands exceed the grain moisture limit for this test. **ns** = column values not significantly different. ↗ Links to full product yield results at www.firstseedtests.com

©2023, All rights reserved to Farmers' Independent Research of Seed Technologies, LLC.

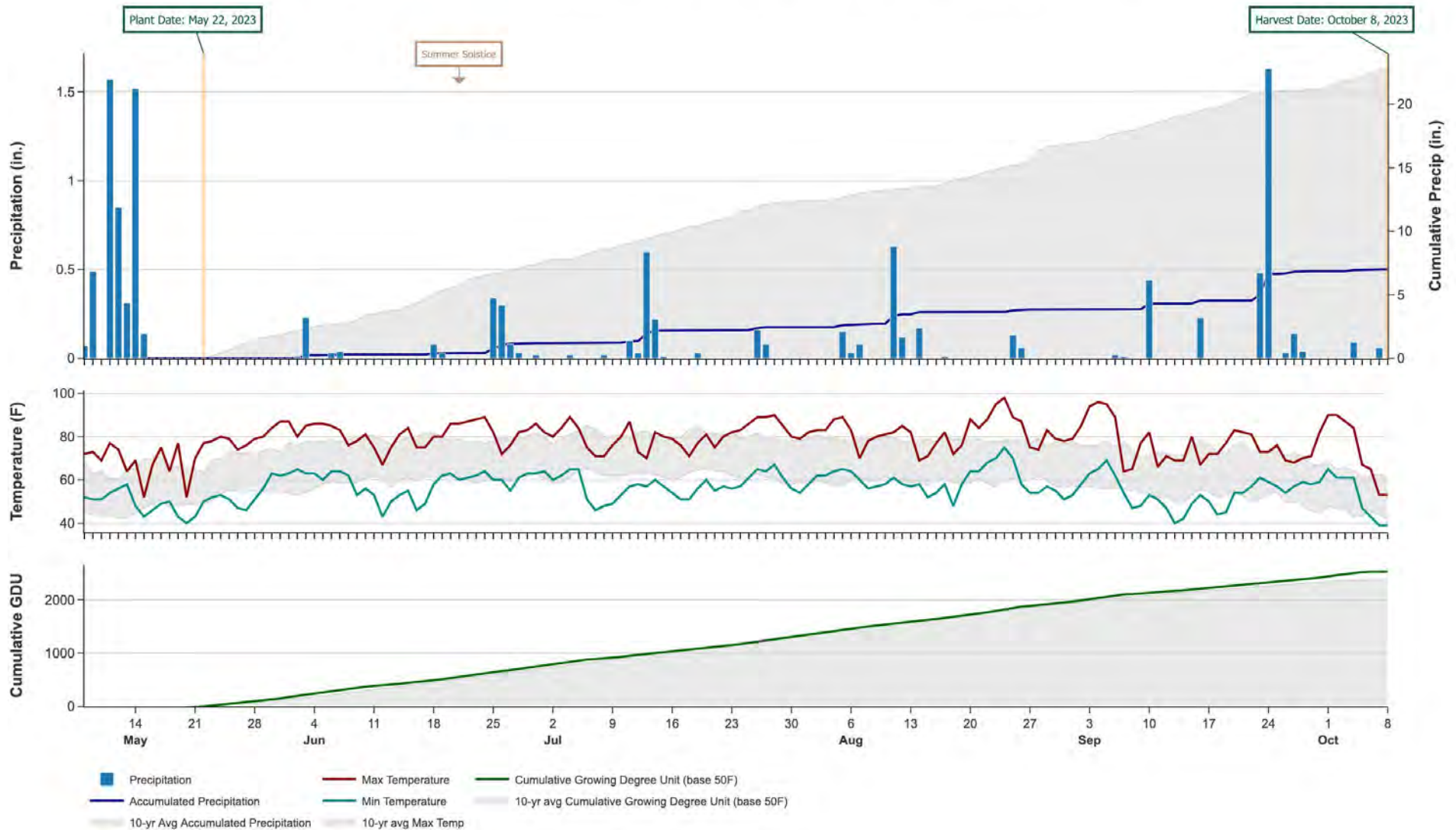
Additional reports available at www.firstseedtests.com

2023 Soybeans - Minnesota South Conventional Specialty [MNSOCV]

Weather Conditions Summary at AUSTIN, MN

Weather Data Retrieved: 10/09/2023

Monthly Total	May*	Jun	Jul	Aug	Sep	Oct*	Total
Precip (in) (Diff)	5.0 4.5 (+0.5)	1.2 5.5 (-4.3)	1.3 5.0 (-3.7)	1.4 4.4 (-3.0)	3.0 4.4 (-1.3)	0.1 1.6 (-1.5)	12.0 25.4 (-13.4)
GDU Avg (Diff)	302 236 (+65)	598 573 (+24)	578 657 (-79)	624 582 (+41)	464 402 (+61)	111 55 (+55)	2677 2508 (+168)



* First monthly total starts on the date 14 days prior to planting and final monthly total ends on the harvest date.

Note: Weather information from PRISM Climate Group. Data may be revised by the provider after retrieval. FIRST will not revise or update reports to reflect any weather data changes. For information purposes only.

2023 Soybeans - Minnesota South Conventional Specialty [MNSOCV]

All-Season Test Products (36 Total)

Company/Brand	Product/Brand	Technology	SCN	RM	Seed Treat.
Asgrow	AG18XF1 §	RXF	R	1.8	ACi,IL
Asgrow	AG19XF3 §	RXF	R	1.9	ACi,IL
Asgrow	AG21XF2 §	RXF	R	2.1	ACi,IL
Brushvale	BS1146 GC	CONV	R	1.2	NA
Brushvale	BS1512 §	CONV	NA	1.4	NA
Brushvale	BS1940 §	CONV	NA	1.9	NA
DF Seeds	DF 174 N	CONV	S	1.7	DFender
DF Seeds	DF 187 N	CONV	R	1.8	DFender
DF Seeds	DF 193 F	CONV	S	1.9	DFender
Golden Harvest	GH1802E3 §	E3	R	1.8	CMB-APX,SA
Golden Harvest	GH2292E3 §	E3	MR	2.2	CMB-APX,SA
Grain Millers	GSP 1.5 EXP	CONV	R	1.5	Untreated
Grain Millers	GSP 17	CONV	S	1.7	Untreated
MNCIA	M07-297007HOLL-1	CONV	NA	1.9	NA
MNCIA	M07-297007HOLL-4	CONV	NA	1.7	NA
MNCIA	M10-238-2036 (MN1510HO)	CONV	NA	1.5	Treated
Pioneer	P11A50 §	CONV	R	1.1	Lum, LumT, IL
Pioneer	P15A20 §	CONV	R	1.5	Untreated
Pioneer	P19A37E §	E3	NA	1.9	Lum
Pioneer	P21A20 §	CONV	R	2.1	Lum, LumT, IL
SB & B Foods	SB19	CONV	S	1.9	Untreated
Sevita	ALINOVA	CONV	R	1.5	F,I,SA
Sevita	CANDOR	CONV	NA	1.9	F,I,SA
Sevita	ODESSA	CONV	S	1.1	F,I,SA
Sevita	ROWAN	CONV	R	2.0	F,I,SA
Sevita	SVX20T2S24	CONV	R	2.4	F,I,SA
Stine	14EG32 §	E3	R	1.4	ACi
Stine	19EG92 §	E3	R	1.9	ACi
Stine	20EG02 §	E3	R	2.0	ACi
Viking	1700N	CONV	NA	1.7	Untreated
Viking	1718N	CONV	MR	1.7	Untreated
Viking	2022N	CONV	MR	2.0	Untreated
Viking	2155N	CONV	MR	2.1	Untreated
Viking	IAS19C3	CONV	MR	2.1	Untreated
Virtue	C3015 (2122) §	CONV	NA	2.1	NA
Virtue	V1821 §	CONV	NA	1.8	NA

Footnotes and Abbreviations Descriptions

Brand Footnotes

CK	Identifies a check product included in early- and full-season tests.
GC	Grower Comparison product included by FIRST when space permits.
§	United Soybean Board sponsored entry

Soybean Cyst Nematode (SCN) Resistance Rating

S	susceptible
MR	moderate resistance
R	resistant
n/a	info unavailable

Soybeans Technologies

CONV	Conventional
E3	Enlist E3®
RXF	XtendFlex®

Soybeans Seed Treatments*

NA	Not Available
ACi	Acceleron® Standard Insecticide-Fungicide
ACi,IL	Acceleron® Standard Insecticide-Fungicide, ILeVO
CMB-APX,SA	CruiserMaxx® APX with Saltro®
DFender	DFender (Legacy Seeds)
F,I,SA	Fungicide, Insecticide, Saltro®
Lum	LumiGEN™
Lum, LumT, IL	LumiGEN™, LumiTreo, ILEVO
Treated	Treated, unspecified
Untreated	No seed treatment

* Seed treatments may include unspecified plant health promoting components.