

Test by: F.I.R.S.T. NCB, Inc. Lanark, IL

2023 Corn Grain Top 30 Harvest Report

Wisconsin Central [WICE] TOMAH, WI
Nathan Bell, Juneau County, WI 54618

Early-Season Test	93 - 98 Day CRM B2023WICE47a
Top 30 of 45	For Gross Income (Sorted by Yield) Average of (3) Replications
PREV. CROP/HERB:	Soybeans / Zidua, Roundup, Flexstar
SOIL DESCRIPTION:	Jackson silt loam, well drained, non-irrigated
SOIL CONDITION:	No-Till, very high P, very high K, 6.4 pH, 2.9% OM, 10.5 CEC
PEST MANAGEMENT:	Cavallo, Atrazine, Strelus II, Force
FERTILITY - Applied N:	27 Fall, 110 Spring, 63 Sidedress
Applied N-P-K (units):	200-69-150
SEEDED - RATE - ROW:	May 12 35.4 /A 30" spacing
HARVESTED - STAND:	Nov 1 31.0 /A

TEST COMMENTS:

Plot had good emergence and looked uniform at V3. This area kept getting small rains in May and June, but really did not get a good soaker until the end of June. The ears that were there were filled close to the tip and had a nice deep kernel set. Stalk quality was still holding strong with some hybrids still showing a little green in the stalks. Overall a nice uniform location.

Company/Brand	Product/Brand	Technol.†	RM	Yield Bu/A ↓	Moisture %	Lodging %	Stand (x 1000)	Gross Income \$/Acre	Rank
Jung	48SS443 ↗	STX	98	246.1	19.7	1	32.2	1134	1
Dairyland	DS-3599Q ↗	QR	95	240.2	19.2	1	33.1	1110	2
FS InVision	FS 4715V RIB ↗	VT2P	97	240.0	19.3	12	31.3	1109	3
Augusta	A2047-PWE ↗	PCE	97	239.8	20.2	3	28.6	1101	4
Thunder	T6498 PC ↗	PCE	98	235.7	19.7	2	33.1	1086	5
Rob-See-Co	D98-43-TRE ↗	TRE	98	234.8	20.2	1	31.3	1079	6
Jung	48DT444 ↗	TRE	98	234.5	20.1	1	33.9	1078	8
Thunder	T6497 TRE ↗	TRE	97	233.6	19.3	1	28.6	1079	7
Channel	197-70TRERIB ↗	TRE	97	232.9	20.1	3	32.2	1071	11
Thunder	T6298 VT2P ↗	VT2P	98	232.6	19.2	3	31.3	1076	9
Channel	193-40VT4PRIB ↗	VT4P	93	232.0	18.7	2	33.1	1076	10
Legacy	LC465-23 ↗	PCE	96	231.6	19.1	2	31.3	1071	12
Dairyland	DS-3881AM ↗	AM	98	231.1	20.0	1	33.0	1063	14
Dairyland	DS-3477AM ↗	AM	94	228.7	19.5	2	31.3	1055	15
Legacy	LC454-22 ↗	VT2P	95	228.4	19.6	7	31.3	1053	17
Thunder	T6396 VT2P ↗	VT2P	94	228.1	19.1	1	33.1	1055	16
Renk	RK571PWE ↗	PCE	96	227.8	19.5	2	31.3	1052	18
Jung	46SS424 ↗	STX	96	227.2	19.6	6	30.4	1048	19
Rob-See-Co	RC4779-PCE ↗	PCE	97	225.8	19.3	4	28.6	1043	20
Legacy	LC474-23 ↗	PCE	97	224.2	20.0	1	30.4	1031	21
Rob-See-Co	RC4518-VT2P ↗	VT2P	95	223.7	19.7	1	33.9	1031	22
Golden Harvest	G97B68-DV ↗	DV	97	223.1	20.3	1	32.2	1024	23
Dairyland	DS-3601AM ↗	AM	96	221.7	20.6	2	31.3	1016	26
Renk	RK485DGV2P ↗	VT2PDG	94	221.4	19.9	2	33.9	1019	24
Channel	195-51STXRIB ↗	STX	95	221.1	19.8	2	28.6	1018	25
Channel	198-82SSPRIB ↗	STXP	98	220.7	19.9	1	33.9	1016	27
NK Brand	NK9832-AA ↗	AA	98	220.6	20.1	1	27.7	1014	29
Augusta	A2046-DV ↗	DV	96	220.6	20.2	1	29.5	1013	30
NK Brand	NK9771-DV ↗	DV	97	220.3	19.7	1	32.2	1015	28
Channel	195-85DGV2PRIB ↗	VT2PDG	95	218.9	19.3	1	31.3	1011	31
PIONEER	P9998Q CK	QR	99	234.0	20.9	1	31.3	1070	13
				Averages =	224.1	19.7	2	31.0	1033
				LSD (0.10) =	10.1	0.6	3		
				LSD (0.25) =	5.3	0.3	2		
				C.V. =	4.3				
Jason Beyers				Historic yield: 216.09 bu/a, 11 yr(s)					
beyers@frontiernet.net, (815) 493-9005									

Yield & Income Factors: Base Moisture = 15.0% Shrink = 1.3 Drying = \$0.03 Prices: GMO = \$4.75

Report Date: 11/01/2023

† See last page for abbreviation descriptions. Dark colored row identifies the check product found in early- and full-season tests. **Bold** yields are significantly above test average by LSD(0.10). **Italicized** brands exceed the grain moisture limit for this test. **ns** = column values not significantly different. ↗ Links to full product yield results at www.firstseedtests.com

©2023, All rights reserved to Farmers' Independent Research of Seed Technologies, LLC.

Additional reports available at www.firstseedtests.com

Test by: F.I.R.S.T. NCB, Inc. Lanark, IL

2023 Corn Grain Top 30 Harvest Report

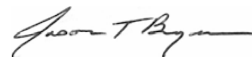
Wisconsin Central [WICE] TOMAH, WI
Nathan Bell, Juneau County, WI 54618

Full-Season Test	99 - 102 Day CRM B2023WICE47b
Top 30 of 45	For Gross Income (Sorted by Yield) Average of (3) Replications
PREV. CROP/HERB:	Soybeans / Zidua, Roundup, Flexstar
SOIL DESCRIPTION:	Jackson silt loam, well drained, non-irrigated
SOIL CONDITION:	No-Till, very high P, very high K, 6.4 pH, 2.9% OM, 10.5 CEC
PEST MANAGEMENT:	Cavallo, Atrazine, Strelis II, Force
FERTILITY - Applied N:	27 Fall, 110 Spring, 63 Sidedress
Applied N-P-K (units):	200-69-150
SEEDED - RATE - ROW:	May 12 35.4 /A 30" spacing
HARVESTED - STAND:	Nov 1 29.9 /A

TEST COMMENTS:

Plot had good emergence and looked uniform at V3. This area kept getting small rains in May and June, but really did not get a good soaker until the end of June. The ears that were there were filled close to the tip and had a nice deep kernel set. Stalk quality was still holding strong with some hybrids still showing a little green in the stalks. Overall a nice uniform location.

Company/Brand	Product/Brand	Technol.†	RM	Yield Bu/A ↓	Moisture %	Lodging %	Stand (x 1000)	Gross Income \$/Acre	Rank
Renk	RK628VT2P ↗	VT2P	102	260.7	21.8	1	32.2	1185	1
Rob-See-Co	RC5188-SSP ↗	STXP	101	255.8	21.2	1	33.1	1167	2
Jung	51FP504 ↗	VT4P	101	253.8	22.1	1	33.1	1152	3
Channel	201-07SSPRIB ↗	STXP	101	253.0	21.6	1	29.5	1152	4
Channel	200-42VT2PRIB ↗	VT2P	100	247.7	21.4	1	26.8	1129	5
Dairyland	DS-4219AM ↗	AM	102	244.7	21.1	1	31.3	1117	7
Thunder	T8100 SS ↗	STX	100	244.3	20.5	1	31.3	1120	6
Dairyland	DS-3900AM ↗	AM	99	240.6	21.0	1	33.1	1100	8
Channel	200-23VT2PRIB ↗	VT2P	100	239.1	20.7	2	26.8	1095	9
Dairyland	DS-4003Q ↗	QR	100	238.6	20.9	5	29.5	1091	10
Rob-See-Co	D01-90-VT2P ↗	VT2P	101	237.1	20.7	1	33.0	1086	12
Channel	200-40VT4PRIB ↗	VT4P	100	236.8	21.3	1	30.4	1080	14
Jung	50DT503 ↗	TRE	100	236.6	20.6	1	29.5	1084	13
Channel	202-70TRERIB ↗	TRE	102	236.2	21.0	6	31.3	1079	15
Augusta	A2150-DV GC ↗	DV	100	235.2	21.1	1	30.4	1074	18
Thunder	T6301 AA ↗	AA	101	234.7	20.6	2	29.5	1076	17
Thunder	T6300 VT2P ↗	VT2P	100	234.7	21.5	1	32.1	1069	19
FS InVision	FS 5125L1A EZR ↗	AA	101	234.2	19.8	1	25.0	1079	16
Renk	RK609VT2P ↗	VT2P	101	233.3	21.7	1	32.2	1061	22
Legacy	LC492-22 ↗	VT2P	99	232.7	20.7	1	23.3	1066	20
Renk	RK579DGV2P ↗	VT2PDG	99	232.6	20.8	1	27.7	1064	21
Legacy	LC494-23 ↗	PCE	99	232.0	21.3	1	30.4	1058	25
Rob-See-Co	RC4937-SSP ↗	STXP	99	231.5	20.8	1	28.6	1059	23
FS InVision	FS 5035P ↗	STXP	100	231.4	21.3	1	26.8	1056	26
Pioneer	P0035Q GC ↗	QR	100	231.2	21.1	1	29.5	1056	27
Renk	RK600VT2P ↗	VT2P	100	230.9	20.4	4	33.9	1059	24
Legacy	LC512-22 ↗	VT2P	101	230.4	21.1	4	30.4	1052	29
Golden Harvest	G01B63-AA ↗	AA	101	230.3	20.7	3	31.3	1055	28
Thunder	T6999 VT2P ↗	VT2P	99	228.5	21.5	4	31.3	1041	31
DeKalb	DKC101-35RIB GC ↗	VT2P	101	228.4	21.0	1	29.5	1044	30
PIONEER	P9998Q CK	QR	99	238.4	21.0	1	27.7	1089	11
				Averages =	232.6	21.0	2	29.9	1063
				LSD (0.10) =	9.5	ns	ns		
				LSD (0.25) =	5.0	ns	ns		
				C.V. =	3.9				
				Historic yield: 216.09 bu/a, 11 yr(s)					



Jason Beyers

beyers@frontiernet.net, (815) 493-9005

Yield & Income Factors: Base Moisture = 15.0% Shrink = 1.3 Drying = \$0.03 Prices: GMO = \$4.75

Report Date: 11/01/2023

† See last page for abbreviation descriptions. Dark colored row identifies the check product found in early- and full-season tests. **Bold** yields are significantly above test average by LSD(0.10). **Italicized** brands exceed the grain moisture limit for this test. **ns** = column values not significantly different. ↗ Links to full product yield results at www.firstseedtests.com

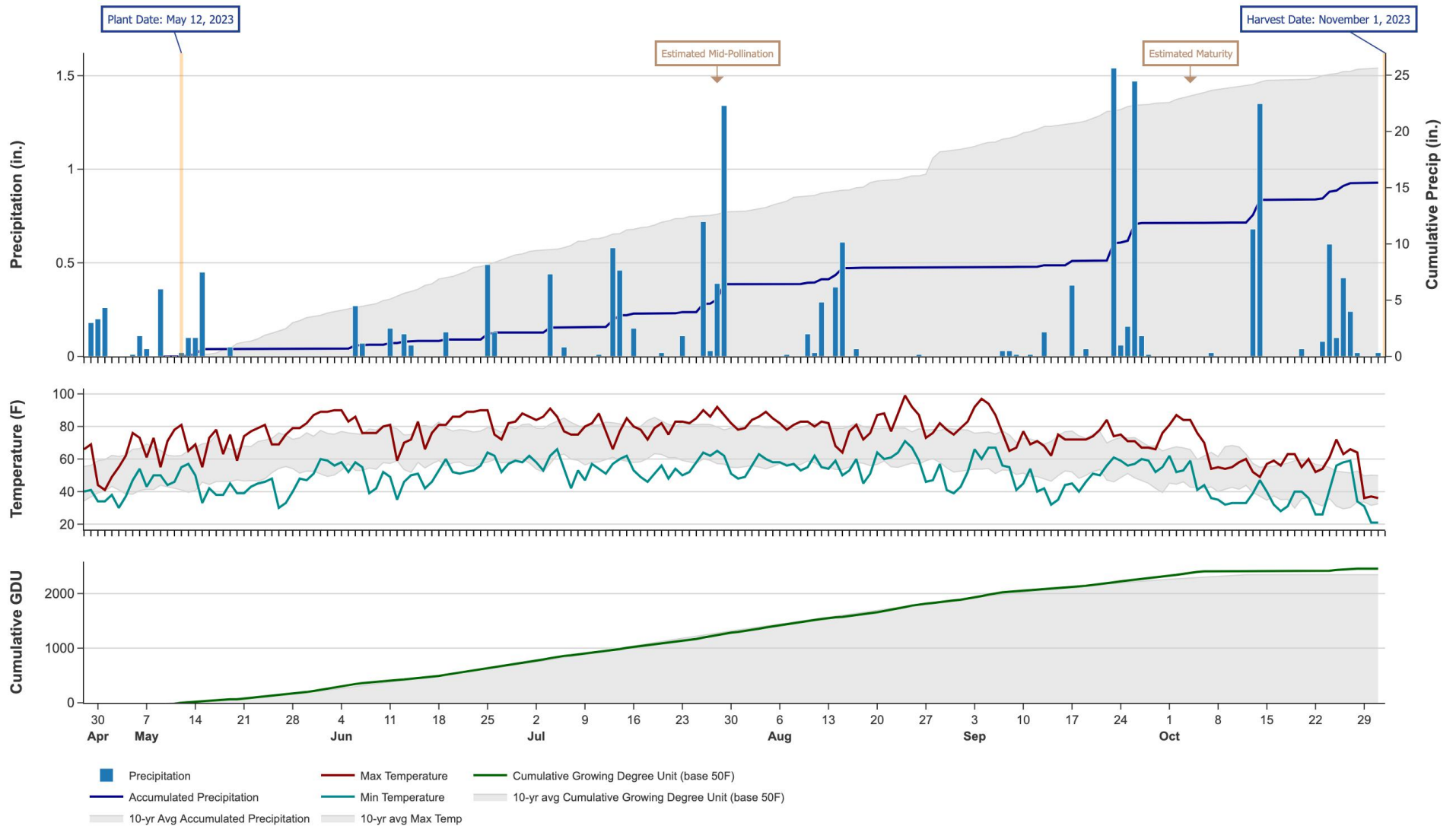
©2023, All rights reserved to Farmers' Independent Research of Seed Technologies, LLC.

Additional reports available at www.firstseedtests.com

2023 Corn - Wisconsin Central [WICE]

Weather Conditions Summary at TOMAH, WI

Monthly Total	Apr*	May	Jun	Jul	Aug	Sep	Oct*	Total
Precip (in) (Diff)	0.4 0.4 (-0.0)	1.5 5.4 (-3.9)	1.4 5.6 (-4.1)	4.3 3.8 (+0.5)	1.5 5.4 (-4.0)	4.0 4.2 (-0.3)	3.6 3.1 (+0.5)	16.6 27.9 (-11.2)
GDU Avg (Diff)	18 0 (+18)	310 290 (+19)	512 508 (+3)	569 617 (-48)	575 551 (+23)	429 368 (+60)	152 90 (+61)	2565 2426 (+138)



* First monthly total starts on the date 14 days prior to planting and final monthly total ends on the harvest date.

Note: Weather information from PRISM Climate Group. Data may be revised by the provider after retrieval. FIRST will not revise or update reports to reflect any weather data changes. For information purposes only.

2023 Corn - Wisconsin Central [WICE]

Early-Season Test Products (45 Total)

Company/Brand	Product/Brand	Technology	RIB	RM	Seed Treat.
Augusta	A1943-AA	AA	N	93	AC,P5V
Augusta	A1946-AA	AA	N	96	CM,C2
Augusta	A2046-DV	DV	N	96	CM,C5
Augusta	A2047-PWE	PCE	N	97	AC,P5V
Augusta	A2048-AA	AA	N	98	CM,C5
Channel	193-40VT4PRIB	VT4P	Y	93	AC,P1V
Channel	195-51STXRIB	STX	Y	95	AC,P5V,EDC-B
Channel	195-85DGV2PRIB	VT2PDG	Y	95	AC,P5V,EDC-B
Channel	197-70TRERIB	TRE	Y	97	AC,P5V,EDC-B
Channel	198-82SSPRIB	STXP	Y	98	AC,P5V,EDC-B
Dairyland	DS-3477AM	AM	Y	94	Lum, L1
Dairyland	DS-3599Q	QR	Y	95	Lum, L1
Dairyland	DS-3601AM	AM	Y	96	Lum
Dairyland	DS-3881AM	AM	Y	98	Lum, L1
FS InVision	FS 4535D2 EZR	V	Y	95	CM,C5,Va
FS InVision	FS 4715V RIB	VT2P	Y	97	AC,P5V,EDC-EL
FS InVision	FS 4927T RIB	TRE	Y	99	AC,P5V,EDC-EL
Golden Harvest	G97B68-DV	DV	Y	97	AVC,C1,Va
Golden Harvest	G98B99-AA	AA	Y	98	CM,C5,Va
Integra	4601 VT2PRIB	VT2P	Y*	96	AC,P5V,SU
Integra	4702 VT2PRIB	VT2P	Y	97	AC,P5V,SU+Zn
Jung	46SS424	STX	Y	96	AC,P5V,EDC-B
Jung	48DT444	TRE	Y	98	AC,P5V,EDC-B
Jung	48SS443	STX	Y	98	AC,P5V,EDC-B
Legacy	LC454-22	VT2P	N	95	AC,P2,Va,Zn
Legacy	LC465-23	PCE	Y	96	CM,C2,Vi,Va
Legacy	LC474-23	PCE	N	97	CM,C2,Vi,Va
NK Brand	NK9771-DV	DV	Y	97	AVC,C1,Va
NK Brand	NK9832-AA	AA	Y	98	CM,C5,Va
Pioneer	P9998Q CK	QR	Y	99	Lum, L1
Renk	RK485DGV2P	VT2PDG	N	94	AC,P2
Renk	RK502SSTX	STX	N	95	AC,P5V
Renk	RK561DGV2P	VT2PDG	N	95	AC,P2
Renk	RK571PWE	PCE	N	96	Lum,P5V
Renk	RK582SSTX	STX	N	98	AC,P5V
Rob-See-Co	D98-43-TRE	TRE	Y	98	CM,C2,Vi,Va
Rob-See-Co	RC4300-VT2P	VT2P	Y	93	AC,P2
Rob-See-Co	RC4518-VT2P	VT2P	Y	95	CM,C2,Vi,Va
Rob-See-Co	RC4680-VT2P	VT2P	Y	96	AC,P2
Rob-See-Co	RC4779-PCE	PCE	N	97	CM,C2,Vi,Va
Thunder	T6298 VT2P	VT2P	Y	98	AC,P2
Thunder	T6396 VT2P	VT2P	Y	94	AC,P2

Company/Brand	Brand/Product	Technology	RIB	RM	Seed Treat.
Thunder	T6397 AA	AA	Y	97	CM,C2,Vi,Va
Thunder	T6497 TRE	TRE	Y	97	AC,P2
Thunder	T6498 PC	PCE	N	98	CM,C2,Vi,Va

* FIRST does not inspect products for refuge blend. N* indicates the product was entered without a refuge component by the sponsoring seed company. Prior year entries may contain refuge blend.

2023 Corn - Wisconsin Central [WICE]

Full-Season Test Products (45 Total)

Company/Brand	Product/Brand	Technology	RIB	RM	Seed Treat.
Augusta	A1849-D	D	N*	99	AVC,C2
Augusta	A2052-AA	AA	N	102	CM,C5
Augusta	A2150-DV GC	DV	Y*	100	CM,C2
Augusta	A22-250-AA	AA	Y	100	CM,C2
Channel	200-23VT2PRIB	VT2P	Y	100	AC,P5V,EDC-B
Channel	200-40VT4PRIB	VT4P	Y	100	AC,P1V
Channel	200-42VT2PRIB	VT2P	Y	100	AC,P5V,EDC-B
Channel	201-07SSPRIB	STXP	Y	101	AC,P5V,EDC-B
Channel	202-70TRERIB	TRE	Y	102	AC,P5V,EDC-B
Dairyland	DS-3900AM	AM	Y	99	Lum, L1
Dairyland	DS-4003Q	QR	Y	100	Lum, L1
Dairyland	DS-4219AM	AM	Y	102	Lum, L1
DeKalb	DKC101-35RIB GC	VT2P	Y	101	AC,P5V,EDC-EL
Dyna-Gro	D38VC80RIB GC	VT2P	Y*	98	AC,P5V
FS InVision	FS 5035P	STXP	N	100	AC,P5V,EDC-EL
FS InVision	FS 5115X RIB	STX	Y	101	AC,P5V,EDC-EL
FS InVision	FS 5125L1A EZR	AA	Y	101	AC,P5V,EDC-EL
Golden Harvest	G00A97-AA	AA	Y	100	CM,C5,Va
Golden Harvest	G01B63-AA	AA	Y	101	CM,C5,Va
Integra	4993 TRERIB	TRE	N	99	AC,P5V,SU+Zn
Integra	CXINT099TRE	TRE	Y	99	AC,P5V,SU+Zn,PT
Jung	49SP453	STXP	Y	99	AC,P5V,EDC-B
Jung	50DT503	TRE	Y	100	AC,P5V,EDC-B
Jung	51FP504	VT4P	Y	101	AC,P5V,EDC-B
Legacy	LC492-22	VT2P	N	99	AC,P2,Va,Zn
Legacy	LC494-23	PCE	N	99	CM,C2,Vi,Va
Legacy	LC512-22	VT2P	N	101	AC,P2,Va,Zn
NK Brand	NK0007-AA	AA	Y	100	CM,C5,Va
NK Brand	NK0295-AA	AA	Y	102	CM,C5,Va
Pioneer	P0035Q GC	QR	Y	100	Lum, L1
Pioneer	P9998Q CK	QR	Y	99	Lum, L1
Renk	RK579DGV2P	VT2PDG	Y	99	AC,P2
Renk	RK597SSPRO	STXP	N	99	AC,P5V,B300
Renk	RK600VT2P	VT2P	N	100	AC,P2
Renk	RK609VT2P	VT2P	Y	101	AC,P5V,B300
Renk	RK628VT2P	VT2P	N	102	AC,P5V,B300
Rob-See-Co	D01-90-VT2P	VT2P	Y	101	CM,C2,Vi,Va
Rob-See-Co	RC4937-SSP	STXP	Y	99	P5V
Rob-See-Co	RC5062-AA	AA	Y	100	CM,C2,Vi,Va
Rob-See-Co	RC5188-SSP	STXP	Y	101	AC,P5V,EDC-EL
Thunder	T6300 VT2P	VT2P	Y	100	AC,P2
Thunder	T6301 AA	AA	Y	101	CM,C2,Vi,Va

Company/Brand	Brand/Product	Technology	RIB	RM	Seed Treat.
Thunder	T6902 VT2P	VT2P	Y	102	AC,P2
Thunder	T6999 VT2P	VT2P	Y	99	AC,P2
Thunder	T8100 SS	STX	Y	100	AC,P5

* FIRST does not inspect products for refuge blend. N* indicates the product was entered without a refuge component by the sponsoring seed company. Prior year entries may contain refuge blend.

Footnotes and Abbreviations Descriptions

Brand Footnotes

CK	Identifies a check product included in early- and full-season tests.
GC	Grower Comparison product included by FIRST when space permits.
^	Innotech™ brand seed is distributed by Rob-See-Co, LLC. Innotech™ is a trademark of Syngenta. Power Plus® brand seed is distributed by Burrus. Power Plus® is a registered trademark of Corteva Agriscience.

Corn Technologies

AA	Agrisure® Above (CB,HX,LL,GT), formerly Agrisure® 3120
AM	Optimum® AcreMax®
D	Duracade™ (CB,HX,RW,RW2,LL,GT), formerly Agrisure Duracade® 5122
DV	DuracadeViptera™ (Vip,CB,HX,RW,RW2,LL,GT), formerly Agrisure Duracade® 5222
PCE	PowerCore® Enlist®
QR	Qrome®
STX	SmartStax®
STXP	SmartStax® Pro with RNAi Technology
TRE	Trecepta®
V	Viptera™ (Vip,CB,HX,LL,GT), formerly Agrisure Viptera® 3220
VT2P	VT Double PRO®
VT2PDG	DroughtGard® with VT Double PRO®
VT4P	VT4Pro™ with RNAi Technology

NOTE: The refuge component genetics may vary in a refuge blend seed product.

Corn Seed Treatments*

NA	Not Available
AC,P1V	Acceleron® Poncho 1250/Votivo
AC,P2	Acceleron® 250
AC,P2,Va,Zn	Acceleron® 250, Vayantis® + Zn
AC,P5	Acceleron® 500
AC,P5V	Acceleron® Poncho 500/Votivo
AC,P5V,B300	Acceleron® Poncho 500/Votivo with B-300 SAT
AC,P5V,EDC-B	Acceleron® BASIC Poncho 500/Votivo with Enhanced Disease Control
AC,P5V,EDC-EL	Acceleron® ELITE Poncho 500/Votivo with Enhanced Disease Control
AC,P5V,SU	Acceleron® Poncho 500/Votivo, StepUp
AC,P5V,SU+Zn	Acceleron® Poncho 500/Votivo, StepUp SP, StepUp Zn
AC,P5V,SU+Zn,PT	Acceleron® Poncho 500/Votivo, StepUp SP, StepUp Zn with PhycoTerra® ST
AVC,C1,Va	Avicta® Complete 1250 with Vayantis®
AVC,C2	Avicta® Complete 250
CM,C2	CruiserMaxx® 250
CM,C2,Vi,Va	CruiserMaxx® 250 with Vibrance, Vayantis®
CM,C5	Cruisermaxx® 500
CM,C5,Va	CruiserMaxx® 500 with Vayantis®
Lum	LumiGEN™ (Corteva Agriscience)
Lum, L1	LumiGEN, Lumisure 1250
Lum,P5V	LumiGEN™ Poncho 500/Votivo
P5V	Poncho 500/Votivo

* Seed treatments may include unspecified plant health promoting components.