

Test by: M&D Seed Research, LLC Van Buren, IN

## 2023 Corn Grain Top 30 Harvest Report

Michigan South [MISO] CHARLOTTE, MI  
Jim & Dennis Orr, Eaton County, MI 48813

<b>Early-Season Test</b>	97 - 102 Day CRM B2023MISO04a
<b>Top 30 of 48</b>	For Gross Income (Sorted by Yield) Average of (4) Replications
<b>PREV. CROP/HERB:</b>	Wheat/Clover / Huskie, Stinger, Quelex
<b>SOIL DESCRIPTION:</b>	Capac loam, mod. poorly drained, non-irrigated
<b>SOIL CONDITION:</b>	No-Till, very high P, very high K, 6.0 pH, 2.9% OM, 11.9 CEC
<b>PEST MANAGEMENT:</b>	Acuron, Atrazine, Roundup, Veltyma Fungicide, Kendo Insecticide
<b>FERTILITY - Applied N:</b>	80 Fall, 63 Spring, 66 Sidedress
<b>Applied N-P-K (units):</b>	209-120-80
<b>SEEDED - RATE - ROW:</b>	May 23 33.6 /A 30" spacing
<b>HARVESTED - STAND:</b>	Nov 12 30.5 /A

### TEST COMMENTS:

*This is a no-till site that was planted into a standing cover crop towards the end of May. Dry conditions at planting, added with the cover crop caused a lack of moisture and led to some emergence problems that did seem to improve when rains came a few weeks after planting. Above average rains in July and August led to excellent pollinations. A healthy plot with high moisture in all plots. One replicate was removed in the full-season test due to higher yield variance.*

Company/Brand	Product/Brand	Technol.†	RM	Yield Bu/A ↓	Moisture %	Lodging %	Stand (x 1000)	Gross Income \$/Acre	Rank
Renk	RK579DGVT2P ↗	VT2PDG	99	<b>251.2</b>	23.7	1	30.4	985	1
Integra	4702 VT2PRIB ↗	VT2P	97	<b>237.7</b>	22.4	1	29.3	944	2
Wyckoff	2160 PCE ↗	PCE	98	<b>235.3</b>	24.8	1	31.1	913	3
Renk	RK600VT2P ↗	VT2P	100	<b>233.1</b>	26.2	1	31.4	891	7
M & W Seeds	MW 46T29 ↗	VT2P	99	<b>232.7</b>	25.2	1	31.8	899	6
Augusta	A2050 VT2P ↗	VT2P	100	<b>231.6</b>	23.7	1	30.7	909	4
Rob-See-Co	RC4779-PCE ↗	PCE	97	<b>229.8</b>	23.9	1	30.0	900	5
Renk	RK628VT2P ↗	VT2P	102	<b>228.5</b>	29.0	1	29.7	848	11
Wyckoff	2299 TRE RIB ↗	TRE	102	223.7	26.9	1	31.1	849	10
Integra	4993 TRERIB ↗	TRE	99	221.6	25.8	1	32.5	851	9
Specialty	27D728 ↗	VT2P	97	218.7	23.2	1	31.4	862	8
Legacy	LC-4248 ↗	VT2P	100	216.1	27.1	1	30.4	818	17
Dairyland	DS-4003Q ↗	QR	100	213.6	28.6	1	31.1	796	25
FS InVision	FS 5115X RIB ↗	STX	101	213.2	27.3	1	29.3	806	20
Augusta	A2048-AA ↗	AA	98	211.6	23.8	1	29.0	829	13
M & W Seeds	MW A96 PWR ↗	PC	96	211.3	25.1	1	32.4	817	18
Legacy	LC512-22 ↗	VT2P	101	211.1	27.3	1	32.5	798	22
Specialty	28DT643 ↗	VT2PDG	98	211.0	23.5	1	29.7	830	12
Renk	RK590VT2P ↗	VT2P	98	209.6	24.0	1	31.8	820	16
M & W Seeds	MW 97A VT2P ↗	VT2P	97	209.3	22.9	1	29.3	828	14
Golden Harvest	G02K39-D ↗	D	102	209.2	28.3	1	31.8	782	27
FS InVision	FS 4927T RIB ↗	TRE	99	209.1	26.4	1	28.6	798	23
Rob-See-Co	RC5134-PCE ↗	PCE	101	208.9	29.0	1	29.0	775	28
NK Brand	NK9832-AA ↗	AA	98	208.5	24.5	1	31.4	811	19
Dairyland	DS-3900AM ↗	AM	99	208.4	25.7	1	30.4	801	21
Integra	CXINT099TRE ↗	TRE	99	206.8	25.3	1	30.7	798	24
FS InVision	FS 5035P ↗	STXP	100	205.1	26.2	1	28.3	784	26
Rob-See-Co	D98-43-TRE ↗	TRE	98	200.5	25.4	1	32.1	773	31
M & W Seeds	MW B101 AA ↗	AA	101	198.9	24.3	1	30.4	775	29
Legacy	LC492-22 ↗	VT2P	99	198.9	24.4	1	32.1	775	30
<b>PIONEER</b>	<b>P0035AM CK</b>	<b>AM</b>	<b>100</b>	<b>218.6</b>	<b>27.6</b>	<b>1</b>	<b>32.5</b>	<b>824</b>	<b>15</b>
				<b>Averages =</b>	<b>208.2</b>	<b>26.0</b>	<b>1</b>	<b>30.5</b>	<b>797</b>
				<b>LSD (0.10) =</b>	18.1	1.0	ns		
				<b>LSD (0.25) =</b>	9.5	0.5	ns		
				<b>C.V. =</b>	9.6				
				Historic yield: 163.9 bu/a, 14 yr(s)					



Matt Turner

mattturner1979@yahoo.com, (317) 606-9040

**Yield & Income Factors:** Base Moisture = 15.5% Shrink = 1.3 Drying = \$0.04 Prices: GMO = \$4.25; non-GMO = \$4.75

Report Date: 11/12/2023

† See last page for abbreviation descriptions. Dark colored row identifies the check product found in early- and full-season tests. **Bold** yields are significantly above test average by LSD(0.10). **Italicized** brands exceed the grain moisture limit for this test. **ns** = column values not significantly different. ↗ Links to full product yield results at [www.firstseedtests.com](http://www.firstseedtests.com)

©2023, All rights reserved to Farmers' Independent Research of Seed Technologies, LLC.

Additional reports available at [www.firstseedtests.com](http://www.firstseedtests.com)

Test by: M&D Seed Research, LLC Van Buren, IN

## 2023 Corn Grain Top 30 Harvest Report

Michigan South [MISO] CHARLOTTE, MI  
Jim & Dennis Orr, Eaton County, MI 48813

<b>Full-Season Test</b>	103 - 107 Day CRM B2023MISO04b
<b>Top 30 of 36</b>	For Gross Income (Sorted by Yield) Average of (3) Replications
<b>PREV. CROP/HERB:</b>	Wheat/Clover / Huskie, Stinger, Quelex
<b>SOIL DESCRIPTION:</b>	Capac loam, mod. poorly drained, non-irrigated
<b>SOIL CONDITION:</b>	No-Till, very high P, very high K, 6.0 pH, 2.9% OM, 11.9 CEC
<b>PEST MANAGEMENT:</b>	Acuron, Atrazine, Roundup, Veltyma Fungicide, Kendo Insecticide
<b>FERTILITY - Applied N:</b>	80 Fall, 63 Spring, 66 Sidedress
<b>Applied N-P-K (units):</b>	209-120-80
<b>SEEDED - RATE - ROW:</b>	May 23 33.6 /A 30" spacing
<b>HARVESTED - STAND:</b>	Nov 12 29.4 /A

### TEST COMMENTS:

*This is a no-till site that was planted into a standing cover crop towards the end of May. Dry conditions at planting, added with the cover crop caused a lack of moisture and led to some emergence problems that did seem to improve when rains came a few weeks after planting. Above average rains in July and August led to excellent pollinations. A healthy plot with high moisture in all plots. One replicate was removed in the full-season test due to higher yield variance.*

Company/Brand	Product/Brand	Technol.†	RM	Yield Bu/A ↓	Moisture %	Lodging %	Stand (x 1000)	Gross Income \$/Acre	Rank
FS InVision	FS 5525VDG RIB ↗	VT2PDG	105	<b>232.1</b>	29.9	1	32.1	853	1
M & W Seeds	MW C104 PWR ↗	PC	104	<b>227.5</b>	29.5	1	31.2	839	3
Wyckoff	2497 PCE ↗	PCE	107	<b>226.3</b>	28.9	1	31.4	840	2
M & W Seeds	MW A107 PWR ↗	PC	107	<b>223.6</b>	30.3	1	30.7	818	4
Dyna-Gro	D44DC73RIB ↗	VT2PDG	104	<b>220.1</b>	29.7	1	32.1	810	5
Integra	5584 PWE ↗	PCE	105	215.8	31.7	1	31.6	777	12
Wyckoff	2432 TRE RIB ↗	TRE	105	215.3	30.4	1	31.2	787	7
FS InVision	FS 5335P RIB ↗	STXP	103	215.1	29.1	1	32.1	797	6
Wyckoff	2515 VT2P RIB ↗	VT2P	107	213.1	30.5	1	32.6	778	11
Legacy	LC544-22 ↗	PCE	104	213.0	30.0	1	31.2	781	10
FS InVision	FS 5594X RIB ↗	STX	105	208.9	30.0	1	28.8	767	13
Renk	RK720TRE ↗	TRE	106	208.5	28.0	1	26.0	782	9
Augusta	A1954 PCE ↗	PCE	104	205.3	29.8	1	26.0	755	16
Legacy	LC554-21 ↗	VT2PDG	105	204.8	30.0	1	24.2	751	17
Golden Harvest	G03B19-AA ↗	AA	103	204.4	28.3	1	32.1	764	15
Dairyland	DS-4365AM ↗	AM	103	202.4	29.0	1	29.8	751	18
Renk	RK703PWE ↗	PCE	106	201.2	29.9	1	29.8	739	19
Wyckoff	2483 VT2P RIB ↗	VT2P	105	201.0	26.6	1	29.8	765	14
Legacy	LC534-23 ↗	TRE	103	200.3	24.0	1	25.8	783	8
Dairyland	DS-4686AM ↗	AM	106	200.0	30.4	1	29.8	731	21
Specialty	37D832 ↗	VT2P	107	199.9	30.6	1	28.8	729	22
Dairyland	DS-4510Q ↗	QR	105	199.6	29.8	1	30.7	734	20
M & W Seeds	MW 44V83 ↗	V	107	199.1	31.2	1	28.8	721	25
Specialty	35D513 ↗	VT2P	105	197.1	29.7	1	32.6	726	23
FS InVision	FS 5725X RIB ↗	STX	107	195.3	29.9	1	26.5	717	27
Wyckoff	2386 PCE ↗	PCE	103	194.9	29.2	1	29.8	722	24
Renk	RK625DGV2P ↗	VT2PDG	104	193.6	29.5	1	27.0	715	28
M & W Seeds	MW 103A VT2P ↗	VT2P	103	191.7	27.8	1	30.7	721	26
M & W Seeds	MW 44V42 ↗	VT2P	107	191.1	29.5	1	26.5	705	30
Specialty	33D552 ↗	VT2P	103	188.9	28.3	1	29.3	706	29
<b>PIONEER</b>	<b>P0035AM CK</b>	<b>AM</b>	<b>100</b>	<b>176.1</b>	<b>28.7</b>	<b>1</b>	<b>30.2</b>	<b>655</b>	<b>35</b>
				<b>Averages =</b>	<b>202.1</b>	<b>29.5</b>	<b>1</b>	<b>29.4</b>	<b>747</b>
				<b>LSD (0.10) =</b>	16.4	1.0	ns		
				<b>LSD (0.25) =</b>	8.6	0.5	ns		
				<b>C.V. =</b>	7.7				
				Historic yield: 163.9 bu/a, 14 yr(s)					



Matt Turner

mattturner1979@yahoo.com, (317) 606-9040

**Yield & Income Factors:** Base Moisture = 15.5% Shrink = 1.3 Drying = \$0.04 Prices: GMO = \$4.25; non-GMO = \$4.75

Report Date: 11/12/2023

† See last page for abbreviation descriptions. Dark colored row identifies the check product found in early- and full-season tests. **Bold** yields are significantly above test average by LSD(0.10). **Italicized** brands exceed the grain moisture limit for this test. **ns** = column values not significantly different. ↗ Links to full product yield results at [www.firstseedtests.com](http://www.firstseedtests.com)

©2023, All rights reserved to Farmers' Independent Research of Seed Technologies, LLC.

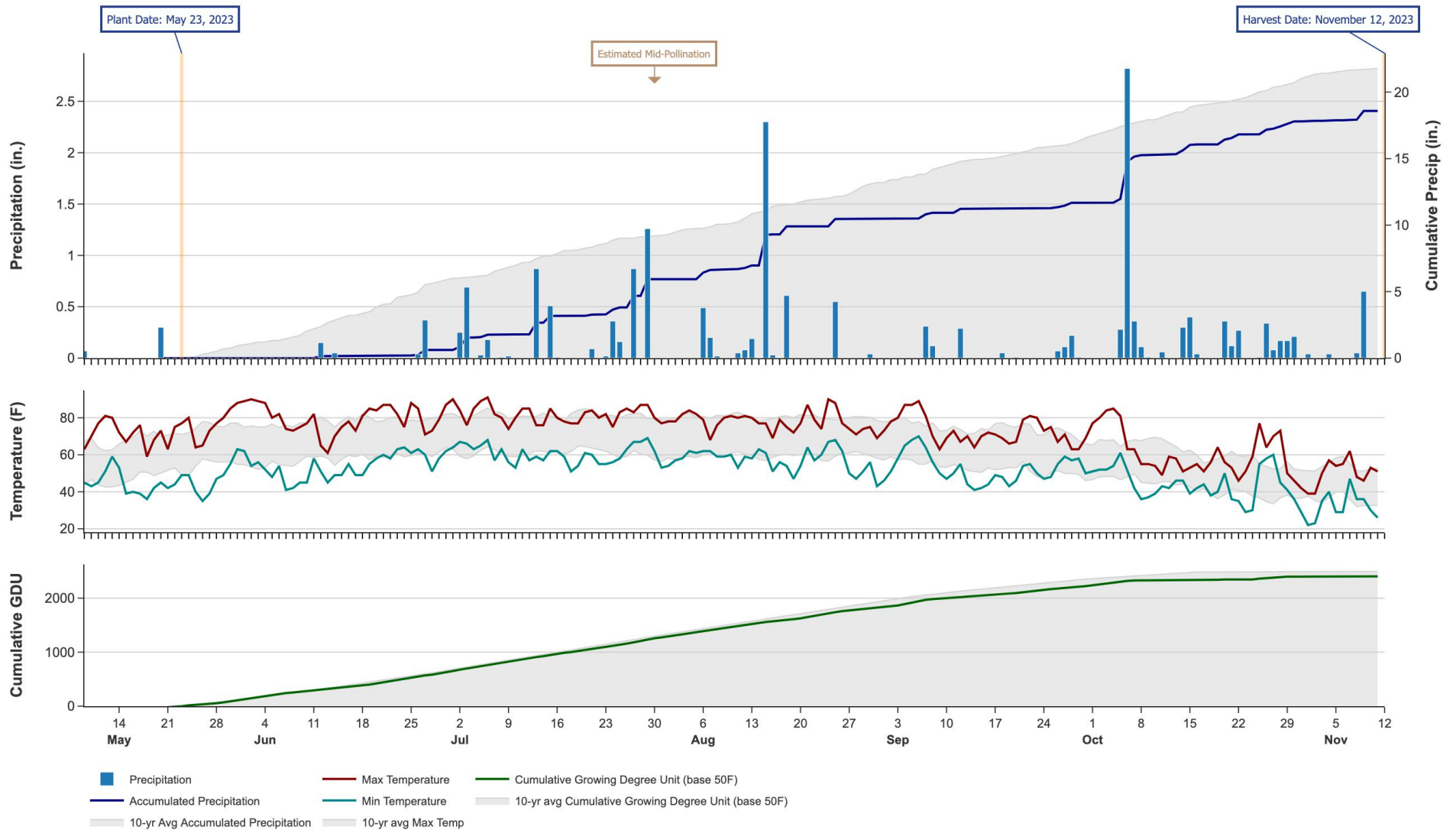
Additional reports available at [www.firstseedtests.com](http://www.firstseedtests.com)

# 2023 Corn - Michigan South [ MISO ]

## Weather Conditions Summary at CHARLOTTE, MI

Weather Data Retrieved: 11/12/2023

Monthly Total	May*	Jun	Jul	Aug	Sep	Oct	Nov*	Total
Precip (in)   (Diff)	0.4   3.1 (-2.7)	0.6   4.9 (-4.3)	5.3   3.4 (+2.0)	4.6   4.0 (+0.6)	1.2   3.4 (-2.2)	6.1   4.5 (+1.7)	0.8   0.8 (0.0)	18.9   23.9 (-5.0)
GDU   Avg (Diff)	278   265 (+12)	512   537 (-25)	647   658 (-11)	547   617 (-70)	404   415 (-11)	174   140 (+33)	6   0 (+6)	2568   2634 (-66)



\* First monthly total starts on the date 14 days prior to planting and final monthly total ends on the harvest date.

Note: Weather information from PRISM Climate Group. Data may be revised by the provider after retrieval. FIRST will not revise or update reports to reflect any weather data changes. For information purposes only.

## 2023 Corn - Michigan South [ MISO ]

### Early-Season Test Products (48 Total)

Company/Brand	Product/Brand	Technology	RIB	RM	Seed Treat.
Augusta	A2048-AA	AA	N	98	CM,C5
Augusta	A2050 VT2P	VT2P	N	100	CM,C2
Augusta	A2052-AA	AA	N	102	CM,C5
Channel	200-23VT2PRIB GC	VT2P	Y	100	AC,P5V,EDC-B
Dairyland	DS-3900AM	AM	Y	99	Lum, L1
Dairyland	DS-4003Q	QR	Y	100	Lum, L1
Dairyland	DS-4219AM	AM	Y	102	Lum, L1
Dyna-Gro	D41TC74RIB	TRE	Y*	101	AC,P5V
FS InVision	FS 4927T RIB	TRE	Y	99	AC,P5V,EDC-EL
FS InVision	FS 5035P	STXP	N	100	AC,P5V,EDC-EL
FS InVision	FS 5115X RIB	STX	Y	101	AC,P5V,EDC-EL
FS InVision	FS 5125L1A EZR	AA	Y	101	AC,P5V,EDC-EL
Golden Harvest	G01B63-AA	AA	Y	101	CM,C5,Va
Golden Harvest	G02K39-D	D	Y	102	AVC,C1,Va
Golden Harvest	G98B99-AA	AA	Y	98	CM,C5,Va
Integra	4702 VT2PRIB	VT2P	Y	97	AC,P5V,SU+Zn
Integra	4993 TRERIB	TRE	N	99	AC,P5V,SU+Zn
Integra	CXINT099TRE	TRE	Y	99	AC,P5V,SU+Zn,PT
Legacy	LC-4248	VT2P	Y	100	AC,P2,Va,Zn
Legacy	LC492-22	VT2P	N	99	AC,P2,Va,Zn
Legacy	LC512-22	VT2P	N	101	AC,P2,Va,Zn
M & W Seeds	MW 46T29	VT2P	Y	99	Ti
M & W Seeds	MW 97A VT2P	VT2P	Y	97	Ti
M & W Seeds	MW A96 PWR	PC	Y	96	Ti
M & W Seeds	MW B101 AA	AA	Y	101	Ti
NK Brand	NK0295-AA	AA	Y	102	CM,C5,Va
NK Brand	NK9771-DV	DV	Y	97	AVC,C1,Va
NK Brand	NK9832-AA	AA	Y	98	CM,C5,Va
Partners Brand	PB 7184-PCE	PCE	N	101	AL2500
Pioneer	P0035AM CK	AM	Y	100	Lum
Pioneer	P9823Q GC	QR	Y	98	Lum, L1
Pioneer	P9955Q GC	QR	Y	99	Lum, L1
Renk	RK579DGV2P	VT2PDG	Y	99	AC,P2
Renk	RK590VT2P	VT2P	N	98	AC,P2
Renk	RK597SSPRO	STXP	N	99	AC,P5V,B300
Renk	RK600VT2P	VT2P	N	100	AC,P2
Renk	RK628VT2P	VT2P	N	102	AC,P5V,B300
Rob-See-Co	D97-95-VT2P	VT2P	Y	97	CM,C2,Vi,Va
Rob-See-Co	D98-43-TRE	TRE	Y	98	CM,C2,Vi,Va
Rob-See-Co	RC4779-PCE	PCE	N	97	CM,C2,Vi,Va
Rob-See-Co	RC5134-PCE	PCE	N	101	CM,C2,Vi,Va
Specialty	27D728	VT2P	Y	97	AC,P2

Company/Brand	Brand/Product	Technology	RIB	RM	Seed Treat.
Specialty	28DT643	VT2PDG	Y	98	AC,P5V
Specialty	30DT192	TRE	Y	100	AC,P5V
Wyckoff	2160 PCE	PCE	Y	98	CM,C2,Vi,Va
Wyckoff	2210 SS RIB	STX	Y	102	AC,P5V
Wyckoff	2250 VT2P RIB	VT2P	Y	101	AC,P2
Wyckoff	2299 TRE RIB	TRE	Y	102	AC,P5V

\* FIRST does not inspect products for refuge blend. N\* indicates the product was entered without a refuge component by the sponsoring seed company. Prior year entries may contain refuge blend.

## 2023 Corn - Michigan South [ MISO ]

### Full-Season Test Products (36 Total)

Company/Brand	Product/Brand	Technology	RIB	RM	Seed Treat.
Augusta	A1954 PCE	PCE	N	104	CM,C2
Augusta	A2057-3111	3111	N	107	CM,C2
Dairyland	DS-4365AM	AM	Y	103	Lum, L1
Dairyland	DS-4510Q	QR	Y	105	Lum, L1
Dairyland	DS-4686AM	AM	Y	106	Lum, L1
Dyna-Gro	D44DC73RIB	VT2PDG	Y	104	AC,P5V
FS InVision	FS 5335P RIB	STXP	Y	103	AC,P5V,EDC-EL
FS InVision	FS 5525VDG RIB	VT2PDG	Y	105	AC,P5V,EDC-EL
FS InVision	FS 5594X RIB	STX	Y	105	AC,P5V,EDC-EL
FS InVision	FS 5725X RIB	STX	Y	107	AC,P5V,EDC-EL
Golden Harvest	G03B19-AA	AA	Y	103	CM,C5,Va
Integra	5443 DGVT2PRIB	VT2PDG	N	104	AC,P5V,SU+Zn
Integra	5584 PWE	PCE	N	105	AC,P5V
Legacy	LC534-23	TRE	N	103	AC,P5V
Legacy	LC544-22	PCE	N	104	AC,P5V
Legacy	LC554-21	VT2PDG	N	105	AC,P2,Va,Zn
M & W Seeds	MW 103A VT2P	VT2P	Y	103	Ti
M & W Seeds	MW 44V42	VT2P	Y	107	Ti
M & W Seeds	MW 44V83	V	Y	107	Ti
M & W Seeds	MW A107 PWR	PC	Y	107	Ti
M & W Seeds	MW C104 PWR	PC	Y	104	Ti
NK Brand	NK0367-AA	AA	Y	103	CM,C5,Va
Pioneer	P0035AM CK	AM	Y	100	Lum
Pioneer	P0720AM GC	AM	Y	107	Lum, L1
Renk	RK625DGVT2P	VT2PDG	N	104	AC,P2
Renk	RK703PWE	PCE	N	106	Lum,P5V
Renk	RK707TRE	TRE	N	105	AC,P5V,B300
Renk	RK720TRE	TRE	N	106	AC,P2
Specialty	33D552	VT2P	Y	103	AC,P5V
Specialty	35D513	VT2P	Y	105	AC,P5V
Specialty	37D832	VT2P	Y	107	AC,P5V
Wyckoff	2386 PCE	PCE	N	103	CM,C2,Vi,Va
Wyckoff	2432 TRE RIB	TRE	Y	105	AC,P5V
Wyckoff	2483 VT2P RIB	VT2P	Y	105	AC,P2
Wyckoff	2497 PCE	PCE	N	107	AC,P5V
Wyckoff	2515 VT2P RIB	VT2P	Y	107	AC,P2

\* FIRST does not inspect products for refuge blend. N\* indicates the product was entered without a refuge component by the sponsoring seed company. Prior year entries may contain refuge blend.

## Footnotes and Abbreviations Descriptions

### Brand Footnotes

---

CK	Identifies a check product included in early- and full-season tests.
GC	Grower Comparison product included by FIRST when space permits.
^	Innotech™ brand seed is distributed by Rob-See-Co, LLC. Innotech™ is a trademark of Syngenta. Power Plus® brand seed is distributed by Burrus. Power Plus® is a registered trademark of Corteva Agriscience.

### Corn Technologies

---

3111	Agrisure® Viptera® 3111 (Vip,CB,RW,LL,GT)
AA	Agrisure® Above (CB,HX,LL,GT), formerly Agrisure® 3120
AM	Optimum® AcreMax®
D	Duracade™ (CB,HX,RW,RW2,LL,GT), formerly Agrisure Duracade® 5122
DV	DuracadeViptera™ (Vip,CB,HX,RW,RW2,LL,GT), formerly Agrisure Duracade® 5222
PC	PowerCore®
PCE	PowerCore® Enlist®
QR	Qrome®
STX	SmartStax®
STXP	SmartStax® Pro with RNAi Technology
TRE	Trecepta®
V	Viptera™ (Vip,CB,HX,LL,GT), formerly Agrisure Viptera® 3220
VT2P	VT Double PRO®
VT2PDG	DroughtGard® with VT Double PRO®

---

NOTE: The refuge component genetics may vary in a refuge blend seed product.

## Corn Seed Treatments\*

---

NA	Not Available
AC,P2	Acceleron® 250
AC,P2,Va,Zn	Acceleron® 250, Vayantis® + Zn
AC,P5V	Acceleron® Poncho 500/Votivo
AC,P5V,B300	Acceleron® Poncho 500/Votivo with B-300 SAT
AC,P5V,EDC-B	Acceleron® BASIC Poncho 500/Votivo with Enhanced Disease Control
AC,P5V,EDC-EL	Acceleron® ELITE Poncho 500/Votivo with Enhanced Disease Control
AC,P5V,SU+Zn	Acceleron® Poncho 500/Votivo, StepUp SP, StepUp Zn
AC,P5V,SU+Zn,PT	Acceleron® Poncho 500/Votivo, StepUp SP, StepUp Zn with PhycoTerra® ST
AL2500	Alert 2500, Surefire
AVC,C1,Va	Avicta® Complete 1250 with Vayantis®
CM,C2	CruiserMaxx® 250
CM,C2,Vi,Va	CruiserMaxx® 250 with Vibrance, Vayantis®
CM,C5	Cruisermaxx® 500
CM,C5,Va	CruiserMaxx® 500 with Vayantis®
Lum	LumiGEN™ (Corteva Agriscience)
Lum, L1	LumiGEN, Lumisure 1250
Lum,P5V	LumiGEN™ Poncho 500/Votivo
Ti	Titan Corn 250 (M & W Seeds)

---

\* Seed treatments may include unspecified plant health promoting components.