

Test by: Effingham, IL

2023 Corn Grain Top 30 Harvest Report

Indiana Central [INCE] CONNERSVILLE, IN

Darren Bommer, Franklin County, IN

Early-Season Test	105 - 110 Day CRM B2023INCE04a
Top 30 of 47	For Gross Income (Sorted by Yield) Average of (4) Replications
PREV. CROP/HERB:	Soybeans / Anthem Max, Round Up, 2,4-D
SOIL DESCRIPTION:	Fincastle/Xenia silt loam, mod. well drained, non-irrigated
SOIL CONDITION:	No-Till, very high P, medium K, 6.6 pH, 3.1% OM, 13.1 CEC
PEST MANAGEMENT:	Atrazine, Round Up, Anthem Max, Delaro
FERTILITY - Applied N:	240 Sidedress
Applied N-P-K (units):	240-0-0
SEEDED - RATE - ROW:	Apr 20 34.0 /A 30" spacing
HARVESTED - STAND:	Oct 11 35.0 /A

TEST COMMENTS:

This no-till location was planted in late April in cool dry conditions. Populations were good. A very dry June kept most hybrids below normal in height. July and August rains resulted in good yields and great plant health. Standability on all hybrids was excellent. Moistures were very consistent. Good location with a great cooperator.

Company/Brand	Product/Brand	Technol.†	RM	Yield Bu/A ↓	Moisture %	Lodging %	Stand (x 1000)	Gross Income \$/Acre	Rank
FS InVision	FS 5935X RIB ↗	STX	109	254.4	19.7	1	35.1	1143	1
NuTech	70F6Q ↗	QR	110	242.1	19.8	1	35.8	1087	2
FS InVision	FS 5725X RIB ↗	STX	107	239.2	17.7	1	35.8	1087	3
Dairyland	DS-4833AM ↗	AM	108	230.6	18.8	1	33.6	1041	4
Purple Ribbon	23A10 ↗	VT2P	110	230.1	18.7	1	35.8	1039	5
Golden Harvest	G10B61-AA ↗	AA	110	230.0	21.5	1	29.1	1023	10
Pioneer	P1222AM GC ↗	AM	112	228.5	18.1	1	35.8	1036	6
Dairyland	DS-4878AM ↗	AM	108	226.1	17.5	1	35.1	1028	7
NK Brand	NK0922-V ↗	V	109	225.5	21.3	1	35.1	1004	16
NuTech	70B4AM ↗	AM	110	225.3	19.6	1	35.8	1012	13
DeKalb	DKC59-82RIB GC ↗	VT2P	109	224.6	16.2	1	35.8	1028	8
Integra	CXINT108VT ↗	VT2P	108	224.3	16.9	1	35.8	1024	9
Augusta	A2058-PWE ↗	PCE	108	223.5	18.1	1	34.3	1013	12
Integra	5802 VT2PRIB ↗	VT2P	108	222.3	16.0	1	35.8	1020	11
Dairyland	DS-4686AM ↗	AM	106	222.0	17.8	1	35.8	1008	15
Wyckoff	2515 VT2P RIB ↗	VT2P	107	222.0	17.5	1	35.1	1010	14
Wyckoff	2575 PCE ↗	PCE	108	221.6	18.2	1	35.1	1004	17
Dairyland	DS-5095AM ↗	AM	110	220.2	18.6	1	35.8	995	18
Wyckoff	2584 VT2P RIB ↗	VT2P	108	217.9	18.7	1	34.3	985	19
AgriGold	A640-12STX GC ↗	STX	110	217.0	19.2	1	35.8	978	21
Ebberts	6220VT2P RIB ↗	VT2P	110	215.9	19.2	1	34.3	973	22
Dyna-Gro	D50VC09RIB ↗	VT2P	110	215.4	16.7	1	34.3	984	20
Augusta	A1958-DV ↗	DV	108	215.4	19.8	1	35.8	967	24
Purple Ribbon	24A09 ↗	VT2P	109	212.8	16.8	1	35.1	972	23
Ebberts	7209TR RIB ↗	TRE	108	212.0	18.0	1	35.1	961	25
Golden Harvest	G10L16-DV ↗	DV	110	211.8	18.6	1	35.1	958	28
Wyckoff	2632 SS RIB ↗	STX	108	211.5	18.6	1	35.8	956	30
Ebberts	9779SSX RIB ↗	STX	108	211.2	17.7	1	34.3	959	26
NuTech	68A7AM ↗	AM	108	211.0	17.4	1	35.8	959	27
FS InVision	FS 5835V RIB ↗	VT2P	108	209.5	16.4	1	35.8	958	29
DEKALB	DKC62-70RIB CK	VT2P	112	183.7	16.2	1	35.8	842	43
				Averages =	212.2	18.1	1	35.0	962
				LSD (0.10) =	24.5	1.2	ns		
				LSD (0.25) =	12.8	0.6	ns		
				C.V. =	12.7				

Klint Tucker

Klint Tucker

klint@whatssmokin.net, (309) 712-1406

Historic yield: 205.75 bu/a, 3 yr(s)

Yield & Income Factors: Base Moisture = 15.0% Shrink = 1.4 Drying = \$0.025 Prices: GMO = \$4.61

Report Date: 10/11/2023

† See last page for abbreviation descriptions. Dark colored row identifies the check product found in early- and full-season tests. **Bold** yields are significantly above test average by LSD(0.10). **Italicized** brands exceed the grain moisture limit for this test. **ns** = column values not significantly different. ↗ Links to full product yield results at www.firstseedtests.com

©2023, All rights reserved to Farmers' Independent Research of Seed Technologies, LLC.

Additional reports available at www.firstseedtests.com

Test by: Effingham, IL

2023 Corn Grain Top 30 Harvest Report

Indiana Central [INCE] CONNERSVILLE, IN

Darren Bommer, Franklin County, IN

Full-Season Test	111 - 114 Day CRM B2023INCE04b
Top 30 of 48	For Gross Income (Sorted by Yield) Average of (4) Replications
PREV. CROP/HERB:	Soybeans / Anthem Max, Round Up, 2,4-D
SOIL DESCRIPTION:	Fincastle/Xenia silt loam, mod. well drained, non-irrigated
SOIL CONDITION:	No-Till, very high P, medium K, 6.6 pH, 3.1% OM, 13.1 CEC
PEST MANAGEMENT:	Atrazine, Round Up, Anthem Max, Delaro
FERTILITY - Applied N:	240 Sidedress
Applied N-P-K (units):	240-0-0
SEEDED - RATE - ROW:	Apr 20 34.0 /A 30" spacing
HARVESTED - STAND:	Oct 11 34.8 /A

TEST COMMENTS:

This no-till location was planted in late April in cool dry conditions. Populations were good. A very dry June kept most hybrids below normal in height. July and August rains resulted in good yields and great plant health. Standability on all hybrids was excellent. Moistures were very consistent. Good location with a great cooperator.

Company/Brand	Product/Brand	Technol.†	RM	Yield Bu/A ↓	Moisture %	Lodging %	Stand (x 1000)	Gross Income \$/Acre	Rank
Great Heart	HT-7360VT2P ↗	VT2P	113	265.8	22.3	1	34.3	1176	1
AgriGold	A644-64VT2P GC ↗	VT2P	114	259.2	22.7	1	35.8	1145	2
ProHarvest	84P78 TRERIB ↗	TRE	114	252.4	20.5	1	34.8	1129	3
NuTech	74C4AM ↗	AM	114	248.9	19.6	1	34.8	1119	4
ProHarvest	83P66 VT2P ↗	VT2P	113	245.9	22.9	1	35.1	1085	5
Ebberts	6444VT2P RIB ↗	VT2P	114	242.3	21.0	1	35.8	1081	6
Great Heart	HT-7256DGV2P ↗	VT2PDG	112	242.0	20.7	1	35.8	1081	7
FS InVision	FS 6432P RIB ↗	STXP	114	241.8	21.1	1	35.8	1078	8
Integra	6274 VT2PRIB ↗	VT2P	112	240.5	21.0	1	35.1	1073	9
FS InVision	FS 6225L1 EZR ↗	AA	112	240.2	21.0	1	35.8	1071	11
NuTech	73A4AM ↗	AM	113	239.2	20.2	1	32.9	1072	10
Wyckoff	2711 VT2P RIB ↗	VT2P	112	238.3	21.3	1	35.8	1061	12
NuTech	73A6Q ↗	QR	113	235.6	20.2	1	35.8	1055	13
Ebberts	6883DGV2P RIB ↗	VT2PDG	112	235.5	21.3	1	35.8	1049	14
Dairyland	DS-5432AM ↗	AM	114	234.9	20.9	1	34.3	1048	15
Wyckoff	2656 PCE ↗	PCE	111	233.1	21.5	1	35.8	1037	17
FS InVision	FS 6137PC ↗	PCE	111	231.1	19.6	1	35.8	1039	16
Great Heart	HT-7499TRE ↗	TRE	114	231.0	23.2	1	35.8	1018	25
Great Heart	HT-7317VT2P ↗	VT2P	113	230.7	21.3	1	26.9	1027	22
Golden Harvest	G13B17-AA ↗	AA	113	230.1	21.2	1	32.8	1025	23
NuTech	72D4AM ↗	AM	112	229.6	19.7	1	35.1	1031	20
Integra	6493 VT2PRIB ↗	VT2P	114	229.3	22.4	1	34.3	1015	26
FS InVision	FS 6306T RIB ↗	TRE	113	228.8	18.7	1	35.8	1033	19
Pioneer	P1359AM GC ↗	AM	113	228.8	19.4	1	35.1	1030	21
DeKalb	DKC63-57RIB GC ↗	VT2P	113	228.5	20.5	1	34.3	1022	24
Dyna-Gro	D53TC23RIB ↗	TRE	113	228.3	18.2	1	33.6	1034	18
FS InVision	FS 6133VDG RIB ↗	VT2PDG	111	226.3	21.5	1	35.1	1006	28
Augusta	A2164-PWE ↗	PCE	114	226.1	21.4	1	35.1	1006	29
Wyckoff	2679 DGV2P RIB ↗	VT2PDG	112	225.2	23.0	1	35.1	993	31
Augusta	A2061-PWE ↗	PCE	111	224.5	19.0	1	34.3	1013	27
DEKALB	DKC62-70RIB CK	VT2P	112	218.7	17.5	1	34.3	995	30
				Averages =	228.2	20.6	1	34.8	1021
				LSD (0.10) =	18.0	1.4	ns		
				LSD (0.25) =	9.4	0.7	ns		
				C.V. =	8.6				
				Historic yield: 205.75 bu/a, 3 yr(s)					

Klint Tucker

klint@whatssmokin.net, (309) 712-1406

Yield & Income Factors: Base Moisture = 15.0% Shrink = 1.4 Drying = \$0.025 Prices: GMO = \$4.61

Report Date: 10/11/2023

† See last page for abbreviation descriptions. Dark colored row identifies the check product found in early- and full-season tests. **Bold** yields are significantly above test average by LSD(0.10). **Italicized** brands exceed the grain moisture limit for this test. **ns** = column values not significantly different. ↗ Links to full product yield results at www.firstseedtests.com

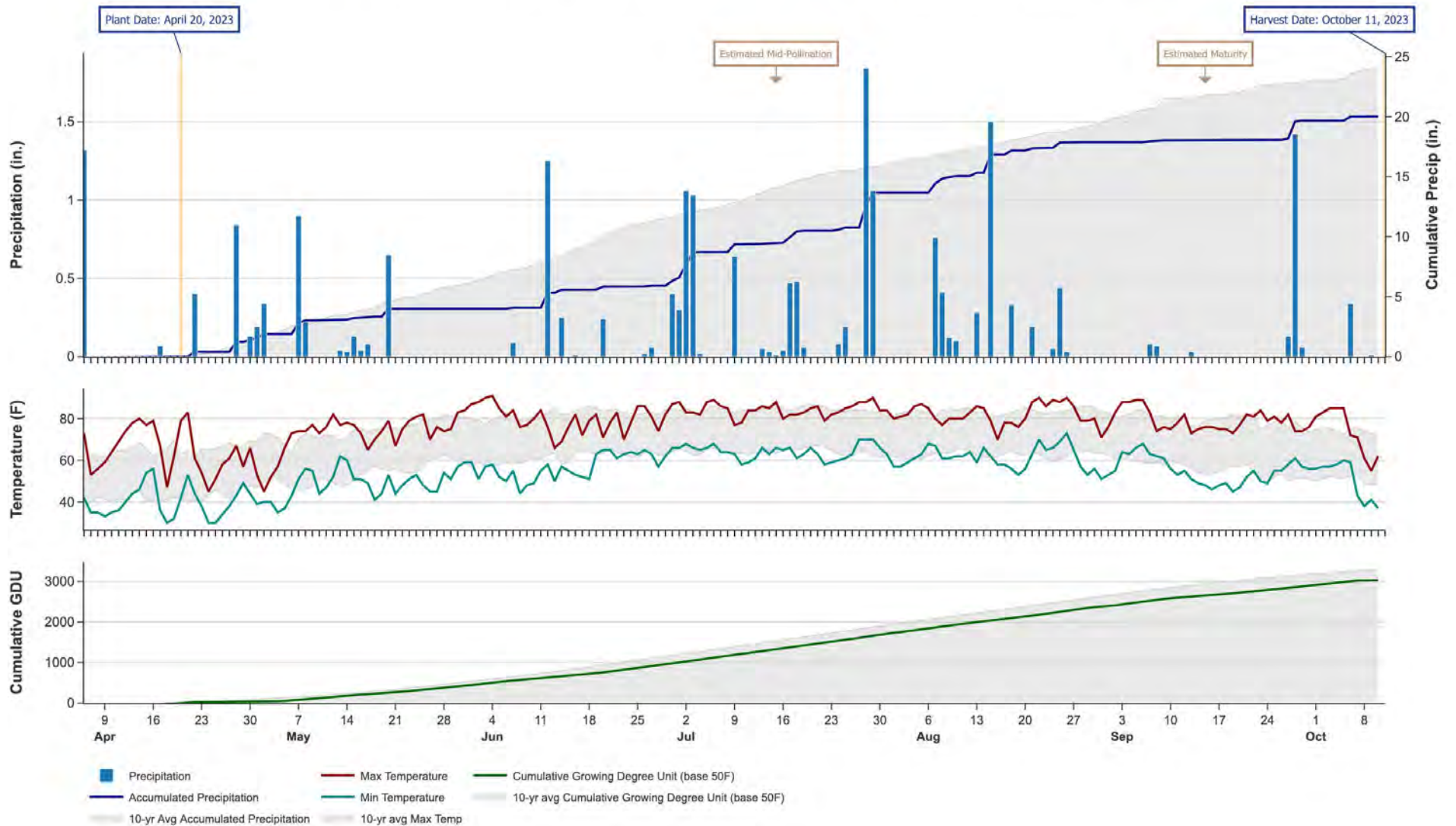
©2023, All rights reserved to Farmers' Independent Research of Seed Technologies, LLC.

Additional reports available at www.firstseedtests.com

2023 Corn - Indiana Central [INCE]

Weather Conditions Summary at CONNERSVILLE, IN

Monthly Total	Apr*	May	Jun	Jul	Aug	Sep	Oct*	Total
Precip (in) (Diff)	2.8 3.4 (-0.7)	2.6 4.7 (-2.0)	2.3 5.6 (-3.3)	7.4 4.4 (+3.0)	4.2 3.4 (+0.8)	1.8 3.6 (-1.8)	0.3 1.0 (-0.7)	21.4 26.1 (-4.7)
GDU Avg (Diff)	168 182 (-14)	375 439 (-64)	554 655 (-101)	742 751 (-9)	660 717 (-57)	516 536 (-20)	136 126 (+9)	3151 3408 (-257)



* First monthly total starts on the date 14 days prior to planting and final monthly total ends on the harvest date.

Note: Weather information from PRISM Climate Group. Data may be revised by the provider after retrieval. FIRST will not revise or update reports to reflect any weather data changes. For information purposes only.

2023 Corn - Indiana Central [INCE]

Early-Season Test Products (47 Total)

Company/Brand	Product/Brand	Technology	RIB	RM	Seed Treat.
AgriGold	A640-12STX GC	STX	N*	110	AC,P5V,EDC-B
Augusta	A1060-3330A-EZ	VZ	Y	110	CM,C2
Augusta	A1160-AA	AA	N	110	CM,C2
Augusta	A1259-5222	DV	Y*	109	CM,C2
Augusta	A1958-DV	DV	N	108	CM,C2
Augusta	A2058-PWE	PCE	N	108	CM,C2
Dairyland	DS-4510Q	QR	Y	105	Lum, L1
Dairyland	DS-4686AM	AM	Y	106	Lum, L1
Dairyland	DS-4833AM	AM	Y	108	Lum, L1
Dairyland	DS-4878AM	AM	Y	108	Lum, L1
Dairyland	DS-5095AM	AM	Y	110	Lum, L1
DeKalb	DKC111-35RIB GC	VT2P	Y*	111	AC,P5V,EDC-EL
DeKalb	DKC59-82RIB GC	VT2P	Y	109	AC,P5V,EDC-EL
DeKalb	DKC62-70RIB CK	VT2P	Y	112	AC,P5V,EDC-EL
Dyna-Gro	D50VC09RIB	VT2P	Y*	110	AC,P5V
Ebberts	6220VT2P RIB	VT2P	Y	110	Ebberts
Ebberts	7209TR RIB	TRE	Y	108	Ebberts
Ebberts	9779SSX RIB	STX	Y	108	Ebberts
FS InVision	FS 5525VDG RIB	VT2PDG	Y	105	AC,P5V,EDC-EL
FS InVision	FS 5725X RIB	STX	Y	107	AC,P5V,EDC-EL
FS InVision	FS 5835V RIB	VT2P	Y	108	AC,P5V,EDC-EL
FS InVision	FS 5935X RIB	STX	Y	109	AC,P5V,EDC-EL
FS InVision	FS 6017V RIB	VT2P	Y	110	AC,P5V,EDC-EL
Golden Harvest	G08B38-AA	AA	Y	108	CM,C5,Va
Golden Harvest	G10B61-AA	AA	Y	110	CM,C5,Va
Golden Harvest	G10L16-DV	DV	Y	110	AVC,C1,Va
Great Heart	HT-6948VT2P	VT2P	Y	109	P5V
Integra	5802 VT2PRIB	VT2P	Y	108	AC,P5V,SU+Zn
Integra	6061 STXRIB	STX	Y	110	AC,P5V,SU+Zn
Integra	CXINT108VT	VT2P	Y	108	AC,P5V,SU+Zn,PT
NK Brand	NK0922-V	V	Y	109	CM,C5,Va
NK Brand	NK1082-DV	DV	Y	110	AVC,C1,Va
NuTech	66D1AM	AM	Y	106	Lum, L1
NuTech	68A7AM	AM	Y	108	Lum, L1
NuTech	68A9AM	AM	Y	108	Lum, L1
NuTech	70B4AM	AM	Y	110	Lum, L1
NuTech	70F6Q	QR	Y	110	Lum, L1
Pioneer	P0953AM GC	AM	Y	109	Lum
Pioneer	P1222AM GC	AM	Y	112	Lum
Purple Ribbon	23A08	VT2P	Y	108	AC,P2
Purple Ribbon	23A10	VT2P	Y	110	AC,P2
Purple Ribbon	24A09	VT2P	Y	109	AC,P2

Company/Brand	Brand/Product	Technology	RIB	RM	Seed Treat.
Wyckoff	2515 VT2P RIB	VT2P	Y	107	AC,P2
Wyckoff	2575 PCE	PCE	N	108	CM,C2,Vi,Va
Wyckoff	2583 TRE RIB	TRE	Y	108	AC,P2
Wyckoff	2584 VT2P RIB	VT2P	Y	108	AC,P2
Wyckoff	2632 SS RIB	STX	Y	108	AC,P5V

* FIRST does not inspect products for refuge blend. N* indicates the product was entered without a refuge component by the sponsoring seed company. Prior year entries may contain refuge blend.

2023 Corn - Indiana Central [INCE]

Full-Season Test Products (48 Total)

Company/Brand	Product/Brand	Technology	RIB	RM	Seed Treat.
AgriGold	A644-64VT2P GC	VT2P	N	114	AC,P5V,EDC-B
Augusta	A1964-3110	3110	N	114	CM,C2
Augusta	A2061-PWE	PCE	N	111	CM,C2
Augusta	A2164-PWE	PCE	N	114	CM,C2
Augusta	A2262-3110	3110	N	112	CM,C2
Dairyland	DS-5177AM	AM	Y	111	Lum, L1
Dairyland	DS-5250AM	AM	Y	112	Lum, L1
Dairyland	DS-5432AM	AM	Y	114	Lum, L1
DeKalb	DKC62-70RIB CK	VT2P	Y	112	AC,P5V,EDC-EL
DeKalb	DKC63-57RIB GC	VT2P	Y	113	AC,P5V,EDC-EL
Dyna-Gro	D53TC23RIB	TRE	Y	113	AC,P5V
Dyna-Gro	D53VC54RIB	VT2P	Y	113	AC,P5V
Ebberts	6444VT2P RIB	VT2P	Y	114	Ebberts
Ebberts	6883DGVT2P RIB	VT2PDG	Y	112	Ebberts
FS InVision	FS 6133VDG RIB	VT2PDG	Y	111	AC,P5V,EDC-EL
FS InVision	FS 6137PC	PCE	N	111	CM,C2,Vi,Va
FS InVision	FS 6225L1 EZR	AA	Y	112	AC,P5V,EDC-EL
FS InVision	FS 6306T RIB	TRE	Y*	113	AC,P5V,EDC-EL
FS InVision	FS 6432P RIB	STXP	Y	114	AC,P5V,EDC-EL
Golden Harvest	G12S75-D	D	Y	112	AVC,C1,Va
Golden Harvest	G13B17-AA	AA	Y	113	CM,C5,Va
Golden Harvest	G14B32-DV	DV	Y	114	AVC,C1,Va
Great Heart	HT-7256DGVT2P	VT2PDG	Y	112	P5V
Great Heart	HT-7317VT2P	VT2P	N	113	P5V
Great Heart	HT-7360VT2P	VT2P	N	113	P5V
Great Heart	HT-7499TRE	TRE	Y	114	P5V
Integra	6244 PWE	PCE	N	112	AC,P5V
Integra	6274 VT2PRIB	VT2P	Y	112	AC,P5V
Integra	6493 VT2PRIB	VT2P	Y*	114	AC,P5V,SU+Zn
NK Brand	NK1188-AA	AA	Y	111	CM,C5,Va
NK Brand	NK1480-DV	DV	Y	114	AVC,C1,Va
NuTech	72D4AM	AM	Y	112	Lum, L1
NuTech	73A4AM	AM	Y	113	Lum, L1
NuTech	73A6Q	QR	Y	113	Lum, L1
NuTech	74A9AM	AM	Y	114	Lum, L1
NuTech	74C4AM	AM	Y	114	Lum, L1
Pioneer	P1359AM GC	AM	N*	113	Lum
ProHarvest	8360 VT2PRIB	VT2P	Y*	113	AC,P5V,Va
ProHarvest	83P66 VT2P	VT2P	N	113	AC,P5V
ProHarvest	84P78 TRERIB	TRE	Y	114	AC,P5V,Va
Purple Ribbon	23A11 TRE	TRE	Y	111	AC,P2
Purple Ribbon	23A12	VT2PDG	Y	112	AC,P2

Company/Brand	Brand/Product	Technology	RIB	RM	Seed Treat.
Purple Ribbon	24A12	VT2P	Y	112	AC,P2
Wyckoff	2656 PCE	PCE	N	111	CM,C2,Vi,Va
Wyckoff	2678 VT2P RIB	VT2P	Y	111	AC,P2
Wyckoff	2679 DGVT2P RIB	VT2PDG	Y	112	AC,P2
Wyckoff	2711 VT2P RIB	VT2P	Y	112	AC,P2
Wyckoff	2733 VT2P RIB	VT2P	Y	114	AC,P2

* FIRST does not inspect products for refuge blend. N* indicates the product was entered without a refuge component by the sponsoring seed company. Prior year entries may contain refuge blend.

Footnotes and Abbreviations Descriptions

Brand Footnotes

CK	Identifies a check product included in early- and full-season tests.
GC	Grower Comparison product included by FIRST when space permits.
^	Innotech™ brand seed is distributed by Rob-See-Co, LLC. Innotech™ is a trademark of Syngenta. Power Plus® brand seed is distributed by Burrus. Power Plus® is a registered trademark of Corteva Agriscience.

Corn Technologies

3110	Agrisure® Viptera® 3110 (Vip, CB,LL,GT)
AA	Agrisure® Above (CB,HX,LL,GT), formerly Agrisure® 3120
AM	Optimum® AcreMax®
D	Duracade™ (CB,HX,RW,RW2,LL,GT), formerly Agrisure Duracade® 5122
DV	DuracadeViptera™ (Vip,CB,HX,RW,RW2,LL,GT), formerly Agrisure Duracade® 5222
PCE	PowerCore® Enlist®
QR	Qrome®
STX	SmartStax®
STXP	SmartStax® Pro with RNAi Technology
TRE	Trecepta®
V	Viptera™ (Vip,CB,HX,LL,GT), formerly Agrisure Viptera® 3220
VT2P	VT Double PRO®
VT2PDG	DroughtGard® with VT Double PRO®
VZ	Viptera™ Z3 (Vip,CB,VTP,LL,GT), formerly Agrisure Viptera® 3330

NOTE: The refuge component genetics may vary in a refuge blend seed product.

Corn Seed Treatments*

NA	Not Available
AC,P2	Acceleron® 250
AC,P5V	Acceleron® Poncho 500/Votivo
AC,P5V,EDC-B	Acceleron® BASIC Poncho 500/Votivo with Enhanced Disease Control
AC,P5V,EDC-EL	Acceleron® ELITE Poncho 500/Votivo with Enhanced Disease Control
AC,P5V,SU+Zn	Acceleron® Poncho 500/Votivo, StepUp SP, StepUp Zn
AC,P5V,SU+Zn,PT	Acceleron® Poncho 500/Votivo, StepUp SP, StepUp Zn with PhycoTerra® ST
AC,P5V,Va	Acceleron® Poncho 500/Votivo, Vayantis®
AVC,C1,Va	Avicta® Complete 1250 with Vayantis®
CM,C2	CruiserMaxx® 250
CM,C2,Vi,Va	CruiserMaxx® 250 with Vibrance, Vayantis®
CM,C5,Va	CruiserMaxx® 500 with Vayantis®
Ebberts	Ebberts Complete Corn (Ebberts Field Seeds)
Lum	LumiGEN™ (Corteva Agriscience)
Lum, L1	LumiGEN, Lumisure 1250
P5V	Poncho 500/Votivo

* Seed treatments may include unspecified plant health promoting components.