

Test by: M.A.I.T.S. Mount Joy, PA

## 2023 Corn Grain Top 30 Harvest Report

Delaware Maryland North [DMNO] CHESTERTOWN, MD  
Tom Mason, Kent County, MD 21620

<b>All-Season Test</b>	106 - 116 Day CRM B2023DMNO17
<b>Top 30 of 42</b>	For Gross Income (Sorted by Yield) Average of (3) Replications
<b>PREV. CROP/HERB:</b>	Corn, 2+ Yr / Lexar, Princep
<b>SOIL DESCRIPTION:</b>	Sassafras sandy loam, well drained, non-irrigated
<b>SOIL CONDITION:</b>	No-Till, very high P, high K, 5.4 pH, 2.8% OM, 8.9 CEC
<b>PEST MANAGEMENT:</b>	Lexar, Princep, Trevo-T
<b>FERTILITY - Applied N:</b>	40 Fall, 150 Spring
<b>Applied N-P-K (units):</b>	190-40-80
<b>SEEDED - RATE - ROW:</b>	May 11 32.5 /A 30" spacing
<b>HARVESTED - STAND:</b>	Nov 1 32.1 /A

### TEST COMMENTS:

*Planting conditions were not ideal, with dry and heavy residue, but corn did emerge uniformly and quickly. Timely rains through the summer gave big yields. At harvest, corn in general was standing nice with only tops going out and a few hybrids with root lodging. The overall rating of the plot is an 8 out of 10.(10=best)*

Company/Brand	Product/Brand	Technol.†	RM	Yield Bu/A ↓	Moisture %	Lodging %	Stand (x 1000)	Gross Income \$/Acre	Rank
DeKalb	DKC62-70RIB GC ↗	VT2P	112	<b>294.1</b>	17.9	2	32.0	1475	1
Dyna-Gro	D53VC54RIB ↗	VT2P	113	<b>287.2</b>	18.4	1	32.4	1437	2
Axis	64M20 GC ↗	VT2P	114	283.0	18.8	7	32.7	1413	5
Revere	0918 VT2PRIB ↗	VT2P	109	281.8	16.7	7	32.9	1422	3
Dyna-Gro	D56TC44RIB ↗	TRE	116	281.4	17.4	7	32.5	1415	4
Pioneer	P1136AM GC ↗	AM	111	280.1	17.0	8	32.0	1411	6
Channel	213-19STXRIB GC ↗	STX	113	279.8	18.0	2	32.0	1403	7
Revere	1307 TCRIB ↗	TRE	113	275.4	17.4	1	30.9	1385	8
Hubner	H4763RC2P ↗	VT2P	115	275.1	18.4	12	31.3	1377	10
Hubner	H09G056 ↗	VT2PDG	109	275.0	17.2	4	32.8	1385	9
Augusta	A7162 VT2P ↗	VT2P	112	274.6	18.0	13	32.0	1377	11
Chemgro	7444PC ↗	PCE	114	273.5	17.6	5	32.1	1374	12
Seed Consultants	SC1134AM ↗	AM	113	273.2	18.2	5	33.2	1369	13
Channel	214-78DGV2PRIB GC ↗	VT2PDG	114	271.7	17.6	21	32.7	1365	14
Augusta	A2264-PWE ↗	PCE	114	271.5	18.2	5	33.2	1360	17
Hubner	H13G513 ↗	VT2PDG	113	271.2	17.7	1	32.6	1362	16
Mid-Atlantic	MA8136DGV2PRIB ↗	VT2PDG	113	270.6	17.8	1	31.2	1359	20
Revere	1627 TCRIB ↗	TRE	116	270.6	18.8	23	32.1	1352	22
Golden Harvest	G10B61-AA ↗	AA	110	270.4	17.4	2	31.7	1360	18
Golden Harvest	G12S75-D ↗	D	112	270.4	17.9	2	33.7	1357	21
Augusta	A2262-3110 ↗	3110	112	270.3	16.9	2	32.4	1363	15
Seed Consultants	SC1154AM ↗	AM	115	270.1	18.5	5	32.0	1351	23
Mid-Atlantic	MA8110TRECIB ↗	TRE	111	270.0	17.2	4	32.9	1360	19
Mid-Atlantic	MA6153PWE ↗	PCE	115	266.1	18.8	4	33.1	1329	25
Augusta	A1365-PWE ↗	PCE	115	265.6	19.0	9	32.3	1325	26
Mid-Atlantic	MA8108VT2PRIB ↗	VT2P	110	265.5	16.8	6	32.5	1339	24
Seed Consultants	SC1094Q ↗	QR	109	261.0	17.5	6	31.9	1312	28
Seed Consultants	SC1112AM ↗	AM	111	260.5	17.4	10	31.1	1310	29
Pioneer	P0859AM GC ↗	AM	108	260.2	16.8	1	31.5	1313	27
Mid-Atlantic	MA6094PWE ↗	PCE	109	259.4	17.0	10	32.1	1307	30

*Robin Kauffman*

Rob Kauffman

rkmait@aol.com, (717) 413-0763

Averages = **267.1** **17.9** **7** **32.1** **1340**

LSD (0.10) = 16.4 0.6 8

LSD (0.25) = 8.6 0.3 4

C.V. = 5.8

Historic yield: 183.96 bu/a, 14 yr(s)

**Yield & Income Factors:** Base Moisture = 15.0% Shrink = 1.3 Drying = \$0.025 Prices: GMO = \$5.09

Report Date: 11/13/2023

† See last page for abbreviation descriptions. Dark colored row identifies the check product found in early- and full-season tests. **Bold** yields are significantly above test average by LSD(0.10). **Italicized** brands exceed the grain moisture limit for this test. **ns** = column values not significantly different. ↗ Links to full product yield results at [www.firstseedtests.com](http://www.firstseedtests.com)

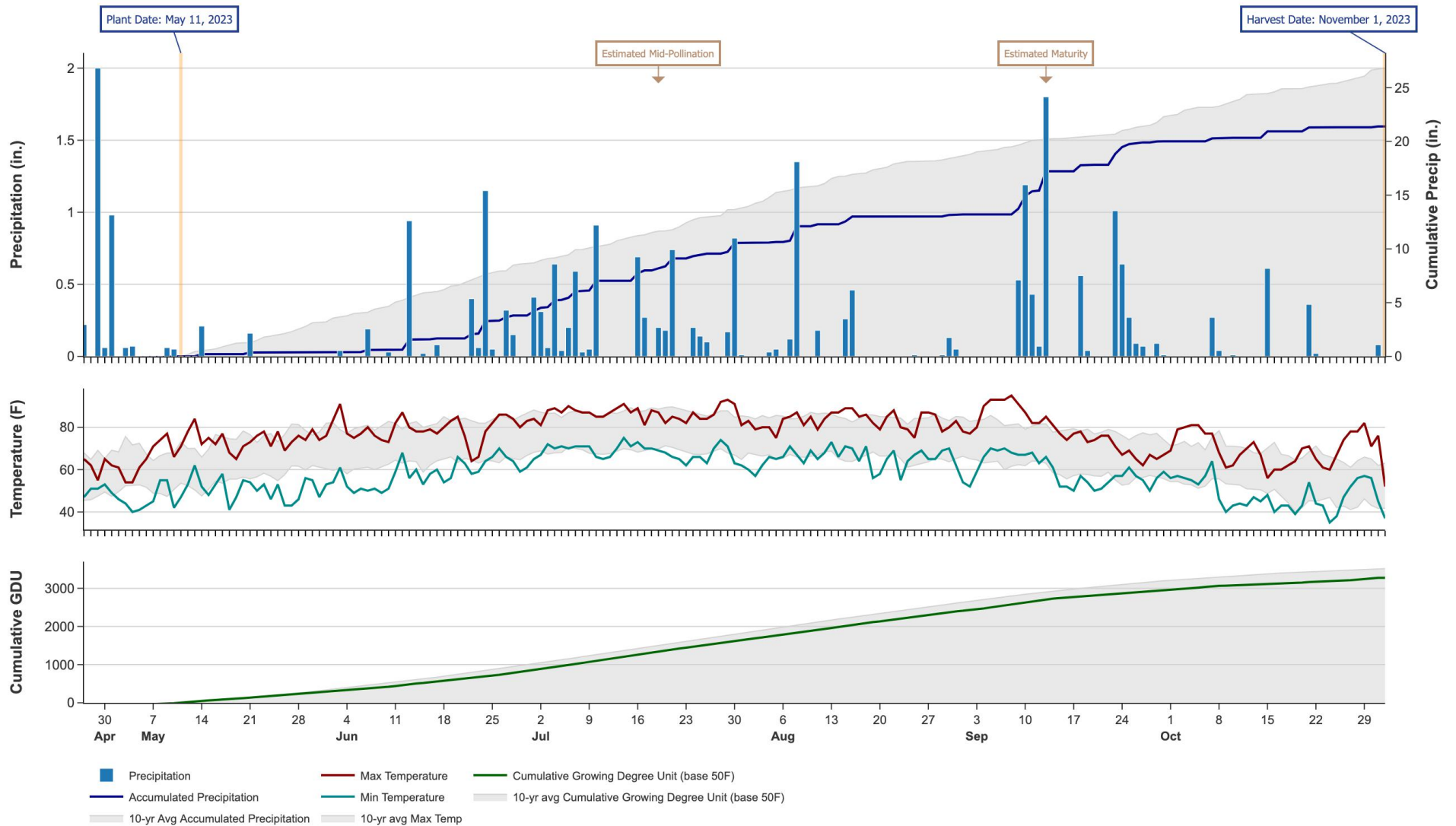
©2023, All rights reserved to Farmers' Independent Research of Seed Technologies, LLC.

Additional reports available at [www.firstseedtests.com](http://www.firstseedtests.com)

# 2023 Corn - Delaware Maryland North [ DMNO ]

## Weather Conditions Summary at CHESTERTOWN, MD

Monthly Total	Apr*	May	Jun	Jul	Aug	Sep	Oct	Nov*	Total
Precip (in)   (Diff)	2.3   0.4 (+1.9)	1.6   4.7 (-3.1)	3.4   5.4 (-2.0)	6.8   5.2 (+1.6)	2.6   4.7 (-2.0)	6.8   3.8 (+3.0)	1.4   4.4 (-3.0)	0.0   0.1 (-0.1)	24.9   28.7 (-3.8)
GDU   Avg (Diff)	26   33 (-7)	352   427 (-75)	557   674 (-117)	826   842 (-16)	744   781 (-37)	538   583 (-45)	340   309 (+30)	0   6 (-6)	3383   3660 (-277)



\* First monthly total starts on the date 14 days prior to planting and final monthly total ends on the harvest date.

Note: Weather information from PRISM Climate Group. Data may be revised by the provider after retrieval. FIRST will not revise or update reports to reflect any weather data changes. For information purposes only.

## 2023 Corn - Delaware Maryland North [ DMNO ]

### All-Season Test Products (42 Total)

Company/Brand	Product/Brand	Technology	RIB	RM	Seed Treat.
Augusta	A1365-PWE	PCE	N	115	CM,C2
Augusta	A1961 TRE	TRE	N	111	Treated
Augusta	A1964-3110	3110	N	114	CM,C2
Augusta	A2164-PWE	PCE	N	114	CM,C2
Augusta	A2262-3110	3110	N	112	CM,C2
Augusta	A2264-PWE	PCE	N	114	CM,C2
Augusta	A7162 VT2P	VT2P	N	112	CM,C2
Axis	64M20 GC	VT2P	Y	114	Treated
Axis	65W75 GC	TRE	Y	115	Treated
Channel	213-19STXRIB GC	STX	Y	113	AC,P2V
Channel	214-78DGV2PRIB GC	VT2PDG	Y	114	AC,P2V
Chemgro	7335RDD	VT2PDG	Y	113	AC250
Chemgro	7444PC	PCE	N	114	CM,C2,Vi,Va
Chemgro	7525RDP	VT2P	Y	115	AC250
DeKalb	DKC62-70RIB GC	VT2P	Y	112	AC,P5V,EDC-EL
Dyna-Gro	D53VC54RIB	VT2P	Y	113	AC,P5V
Dyna-Gro	D56TC44RIB	TRE	Y	116	AC,P5V
Golden Harvest	G10B61-AA	AA	Y	110	CM,C5,Va
Golden Harvest	G12S75-D	D	Y	112	AVC,C1,Va
Golden Harvest	G16Q82-AA	AA	Y	116	CM,C5,Va
Hefty	H6244 GC	STX	N	112	NA
Hubner	H09G056	VT2PDG	Y	109	AC,P5,B360
Hubner	H13G513	VT2PDG	Y	113	AC,P5,B360
Hubner	H1880D	VT2P	Y	118	AC,P5,B360
Hubner	H4763RC2P	VT2P	Y	115	AC,P2,B360
Mid-Atlantic	MA5124VIP3110	3110	N	112	CM,C2
Mid-Atlantic	MA6094PWE	PCE	N	109	CM,C2
Mid-Atlantic	MA6148PWE	PCE	N	114	CM,C2
Mid-Atlantic	MA6153PWE	PCE	N	115	CM,C2
Mid-Atlantic	MA8108VT2PRIB	VT2P	Y	110	AC,P2
Mid-Atlantic	MA8110TRECRIB	TRE	Y*	111	AC,P2
Mid-Atlantic	MA8136DGV2PRIB	VT2PDG	Y	113	AC,P2
Pioneer	P0859AM GC	AM	Y	108	Lum
Pioneer	P1136AM GC	AM	Y	111	Lum
Revere	0918 VT2PRIB	VT2P	Y	109	Treated
Revere	1307 TCRIB	TRE	Y	113	Treated
Revere	1627 TCRIB	TRE	Y	116	Treated
Seed Consultants	SC1094Q	QR	Y	109	Lum, L1
Seed Consultants	SC1112AM	AM	Y	111	Lum, L1
Seed Consultants	SC1122Q	QR	Y	112	Lum, L1
Seed Consultants	SC1134AM	AM	Y	113	Lum, L1
Seed Consultants	SC1154AM	AM	Y	115	Lum, L1

\* FIRST does not inspect products for refuge blend. N\* indicates the product was entered without a refuge component by the sponsoring seed company. Prior year entries may contain refuge blend.

## Footnotes and Abbreviations Descriptions

### Brand Footnotes

---

CK	Identifies a check product included in early- and full-season tests.
GC	Grower Comparison product included by FIRST when space permits.
^	Innotech™ brand seed is distributed by Rob-See-Co, LLC. Innotech™ is a trademark of Syngenta. Power Plus® brand seed is distributed by Burrus. Power Plus® is a registered trademark of Corteva Agriscience.

### Corn Technologies

---

3110	Agrisure® Viptera® 3110 (Vip, CB,LL,GT)
AA	Agrisure® Above (CB,HX,LL,GT), formerly Agrisure® 3120
AM	Optimum® AcreMax®
D	Duracade™ (CB,HX,RW,RW2,LL,GT), formerly Agrisure Duracade® 5122
PCE	PowerCore® Enlist®
QR	Qrome®
STX	SmartStax®
TRE	Trecepta®
VT2P	VT Double PRO®
VT2PDG	DroughtGard® with VT Double PRO®

---

NOTE: The refuge component genetics may vary in a refuge blend seed product.

### Corn Seed Treatments\*

---

NA	Not Available
AC250	Acceleron® 250
AC,P2	Acceleron® 250
AC,P2,B360	Acceleron® 250 with BioRise™ B-360 ST
AC,P2V	Acceleron® Poncho 250/Votivo
AC,P5,B360	Acceleron® 500 with BioRise™ B-360 ST
AC,P5V	Acceleron® Poncho 500/Votivo
AC,P5V,EDC-EL	Acceleron® ELITE Poncho 500/Votivo with Enhanced Disease Control
AVC,C1,Va	Avicta® Complete 1250 with Vayantis®
CM,C2	CruiserMaxx® 250
CM,C2,Vi,Va	CruiserMaxx® 250 with Vibrance, Vayantis®
CM,C5,Va	CruiserMaxx® 500 with Vayantis®
Lum	LumiGEN™ (Corteva Agriscience)
Lum, L1	LumiGEN, Lumisure 1250
Treated	Treated seed, unspecified

---

\* Seed treatments may include unspecified plant health promoting components.