

Test by: M.A.I.T.S. Mount Joy, PA

## 2022 Soybeans Top 30 Harvest Report

Delaware Maryland North [DMNO] PRINCESS ANNE, MD  
UniSouth Genetics, Kevin Anderson, Somerset County, MD

<b>All-Season Test</b>	Maturity Group <b>3.7 - 4.7</b> S2022DMNO03
<b>Top 30 of 54</b>	For Gross Income (Sorted by Yield) Average of (3) Replications
<b>PREV. CROP/HERB:</b>	Corn/Barley / NA
<b>SOIL DESCRIPTION:</b>	Manokin silt loam, mod. well drained, non-irrigated
<b>SOIL CONDITION:</b>	very high P, very high K, 6.2 pH, 2.3% OM, 6.5 CEC
<b>TILLAGE/CULTIVATION:</b>	No-Till
<b>PEST MANAGEMENT:</b>	Valor, Raptor, Cleanse
<b>Applied N-P-K (units):</b>	0-0-0
<b>SEEDED - RATE - ROW:</b>	Jun 16 168.0 /A 15" spacing
<b>HARVESTED - STAND:</b>	Dec 12 159.3 /A

### TEST COMMENTS:

*Planted no-till in barley stubble with good soil moisture allowed for good emergence. Soybeans started well before turning hot and dry for most of the summer. Kevin was surprised that the yields were that high with so little rainfall. At harvest soybean quality was not good with some mold and purple stain, probably caused by the late fall heavy rains. Shattering was not a problem. The overall rating of the plot is an 8 out of 10. (10=best)*

Company/Brand	Product/Brand	Technol.†	RM	SCN Resist.	Yield Bu/A ↓	Moisture %	Lodging %	Stand (x 1000)	Gross Income \$/Acre	Rank
Golden Harvest	GH4343XFS ↗	RXF,ST	4.3	R	<b>65.2</b>	17.1	2	160.0	930	1
Revere	4606XFS ↗	RXF,ST	4.6	NA	<b>64.6</b>	16.6	3	160.0	922	2
Golden Harvest	GH4093E3 § ↗	E3	4.0	R	<b>64.3</b>	16.8	3	160.0	918	3
Innotech	3958E3S ↗	E3,ST	3.9	MR	<b>64.0</b>	17.0	3	160.0	913	4
Asgrow	AG47XF3 § ↗	RXF,ST	4.7	R	<b>63.9</b>	16.8	1	160.0	912	5
Seed Consultants	SC 7472E ↗	E3	4.7	MR	<b>63.5</b>	16.8	3	160.0	906	6
Hubner	H48-31XF ↗	RXF	4.8	R	<b>62.3</b>	16.5	4	160.0	890	7
Uni South Genetics	USG7461XFS GC ↗	RXF,ST	4.6	R	61.7	16.6	3	160.0	881	8
Revere	4526XF ↗	RXF	4.5	MR	61.3	17.2	2	160.0	875	9
MorSoy	MS 4640 XF ↗	RXF,ST	4.6	MR	61.0	16.6	3	160.0	871	10
Xitavo	XO 4653E ↗	E3,ST	4.6	MR	60.8	16.9	4	160.0	868	11
Mid-Atlantic	MAS3822E3/STS ↗	E3,ST	3.9	NA	60.5	16.6	2	160.0	864	12
Revere	4415XF ↗	RXF	4.4	NA	60.2	17.0	2	160.0	859	13
Mid-Atlantic	MAS4675E3/STS ↗	E3,ST	4.6	MR	59.1	17.0	1	160.0	843	14
Hubner	H47-43XF ↗	RXF	4.7	R	59.0	16.7	2	160.0	842	15
Hubner	H42-31XF ↗	RXF	4.2	R	59.0	17.0	2	160.0	842	16
Mid-Atlantic	MAS4721E3/STS ↗	E3,ST	4.7	NA	58.6	17.0	3	160.0	836	17
NK Brand	NK39-T5E3S § ↗	E3,ST	3.9	R	57.8	16.9	5	160.0	825	18
Seed Consultants	SC 7412E ↗	E3	4.1	MR	57.8	16.7	2	160.0	825	19
Golden Harvest	GH4222XF § ↗	RXF	4.2	R	57.8	17.0	2	160.0	825	20
MorSoy	MS 4852 XF ↗	RXF	4.8	R	57.4	16.6	2	160.0	820	21
Xitavo	XO 4722E ↗	E3	4.7	MR	57.3	16.5	3	160.0	818	22
Southern Harvest	SH 4622 E3 ↗	E3	4.6	S	56.6	16.6	2	154.3	808	23
Stine	38EF32 § ↗	E3	3.8	R	56.6	16.7	2	160.0	808	24
Mid-Atlantic	MAS4021E3 ↗	E3	4.0	NA	56.4	16.7	4	160.0	805	25
Golden Harvest	GH3762E3S ↗	E3,ST	3.7	MR	56.1	16.6	3	160.0	801	26
Mid-Atlantic	MAS4320E3/STS ↗	E3,ST	4.3	NA	56.1	16.8	2	160.0	801	27
Revere	4128XFS ↗	RXF,ST	4.1	MR	55.7	17.0	5	160.0	795	28
NK Brand	NK45-V9E3 ↗	E3	4.5	R	55.6	17.1	4	160.0	793	29
Southern Harvest	SH 4923 E3 ↗	E3	4.7	S	55.5	17.2	3	160.0	792	30

*Robin Kauffman*

Rob Kauffman

rkmait@aol.com, (717) 413-0763

Averages = **55.7** **16.8** **2** **159.3** **795**

LSD (0.10) = 6.2 0.3 2

LSD (0.25) = 3.3 0.2 1

C.V. = 10.7

Historic yield: 74.88 bu/a, 1 yr(s)

### Yield & Income Factors:

Base Moisture = 13.0%

Shrink = 1.0

Drying = \$0.02

Prices: GMO = \$14.35

Report Date: 12/14/2022

† See last page for abbreviation descriptions. Dark colored row identifies the check product found in early- and full-season tests. **Bold** yields are significantly above test average by LSD(0.10). **Italicized** brands exceed the grain moisture limit for this test. **ns** = column values not significantly different. ↗ Links to full product yield results at www.firstseedtests.com

©2022, All rights reserved by Elite Field Genetics, LLC

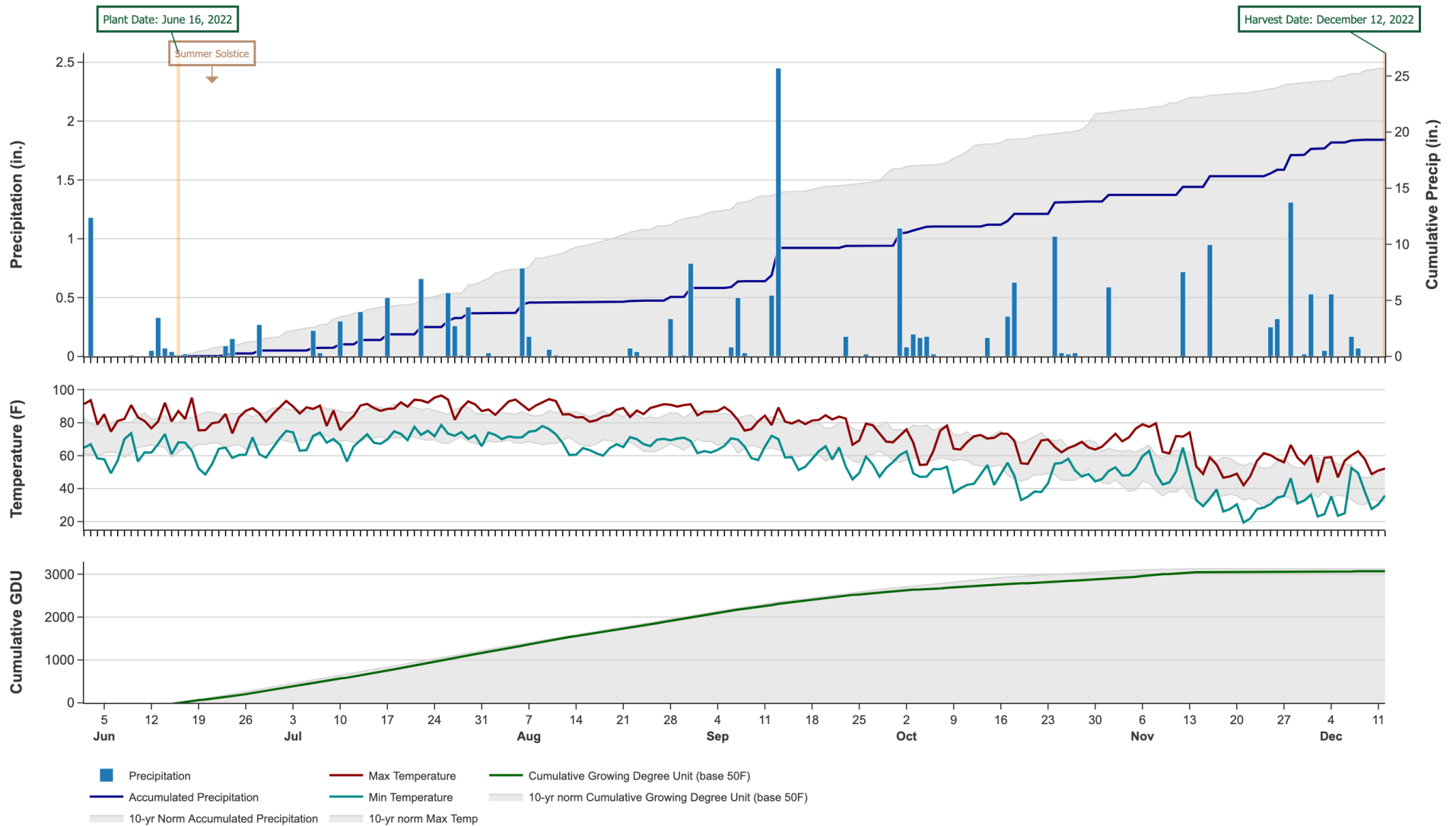
Additional reports available at [www.firstseedtests.com](http://www.firstseedtests.com)

# 2022 Soybeans - Delaware Maryland North [ DMNO ]

## Weather Conditions Summary at PRINCESS ANNE, MD

Weather Data Retrieved: 12/14/2022

Monthly Total	Jun*	Jul	Aug	Sep	Oct	Nov	Dec*	Total
Precip (in)   Normal (Diff)	2.2   4.0 (-1.8)	3.3   5.0 (-1.7)	2.2   5.7 (-3.5)	3.8   4.3 (-0.6)	3.9   5.0 (-1.0)	4.2   2.7 (+1.5)	1.4   1.3 (0.0)	21.0   28.0 (-7.0)
GDU   Normal (Diff)	640   686 (-46)	861   862 (-1)	838   806 (+31)	600   650 (-50)	285   389 (-104)	173   61 (+111)	13   0 (+13)	3410   3456 (-46)



\* First monthly total starts on the date 14 days prior to planting and final monthly total ends on the harvest date.

Note: Weather information from PRISM Climate Group. Data may be revised by the provider after retrieval. FIRST will not revise or update reports to reflect any weather data changes. For information purposes only.

## 2022 Soybeans - Delaware Maryland North [ DMNO ]

### All-Season Test Products (54 Total)

Company/Brand	Product/Brand	Technology	SCN	RM	Seed Treat.
Asgrow	AG38XF1 §	RXF	R	3.8	ACi
Asgrow	AG41XF2 §	RXF	R	4.1	ACi,IL
Asgrow	AG47XF3 §	RXF,ST	R	4.7	ACi,IL
Chemgro	C3755XF	RXF	R	3.7	CGT
Chemgro	C3855E	E3	R	3.8	CGT
Golden Harvest	GH3762E3S	E3,ST	MR	3.7	CMBV,SA
Golden Harvest	GH4093E3 §	E3	R	4.0	CMBV,SA
Golden Harvest	GH4222XF §	RXF	R	4.2	CMBV,SA
Golden Harvest	GH4343XFS	RXF,ST	R	4.3	CMBV,SA
Hubner	H39-31XF	RXF	R	3.9	ACi
Hubner	H42-31XF	RXF	R	4.2	ACi
Hubner	H47-43XF	RXF	R	4.7	ACi
Hubner	H48-31XF	RXF	R	4.8	ACi
Innotech	3958E3S	E3,ST	MR	3.9	RP
Innotech	4737E3	E3	MR	4.7	RP
Mid-Atlantic	MAS3822E3/STS	E3,ST	NA	3.9	PS
Mid-Atlantic	MAS4021E3	E3	NA	4.0	PS
Mid-Atlantic	MAS4320E3/STS	E3,ST	NA	4.3	PS
Mid-Atlantic	MAS4622E3	E3,ST	NA	4.6	PS
Mid-Atlantic	MAS4675E3/STS	E3,ST	MR	4.6	PS
Mid-Atlantic	MAS4721E3/STS	E3,ST	NA	4.7	PS
MorSoy	MS 4640 XF	RXF,ST	MR	4.6	AVC,C5,Vi
MorSoy	MS 4852 XF	RXF	R	4.8	AVC,C5,Vi
NK Brand	NK39-T5E3S §	E3,ST	R	3.9	CMBV,SA
NK Brand	NK43-P7E3S	E3,ST	R	4.3	CMBV,SA
NK Brand	NK45-V9E3	E3	R	4.5	CMBV,SA
Pioneer	P42T71PR §	P	NA	4.2	NA
Public	MONOCACY GC	CONV	MR	4.0	NA
Revere	4128XFS	RXF,ST	MR	4.1	RP
Revere	4415XF	RXF	NA	4.4	RP
Revere	4526XF	RXF	MR	4.5	RP
Revere	4606XFS	RXF,ST	NA	4.6	RP
Seed Consultants	SC 7381E	E3	NA	3.8	Lum,Lu,IL
Seed Consultants	SC 7412E	E3	MR	4.1	Lum,Lu,IL
Seed Consultants	SC 7462E	E3	MR	4.6	Lum,Lu,IL
Seed Consultants	SC 7472E	E3	MR	4.7	Lum,Lu,IL
Seed Genetics Direct	AGI0743AE	E3	NA	4.3	NA
Southern Harvest	SH 4022 E3	E3	R	4.0	MAX
Southern Harvest	SH 4622 E3	E3	S	4.6	MAX
Southern Harvest	SH 4923 E3	E3	S	4.7	MAX
Stine	38EF32 §	E3	R	3.8	SFI
Stine	40EB22 §	E3	R	4.0	SFI

Company/Brand	Brand/Product	Technology	SCN	RM	Seed Treat.
Stine	41EE62 §	E3	R	4.1	SFI
Uni South Genetics	USG7392XFS GC	RXF,ST	R	3.9	ACi
Uni South Genetics	USG7461XFS GC	RXF,ST	R	4.6	ACi
Xitavo	XO 3803E	E3,ST	MR	3.8	PV,IL,OB,Rey
Xitavo	XO 3861E	E3	R	3.8	PV,IL,OB,Rey
Xitavo	XO 3922E	E3	R	3.9	PV,IL,OB,Rey
Xitavo	XO 4132E	E3	R	4.1	PV,IL,OB,Rey
Xitavo	XO 4371E	E3	R	4.3	PV,IL,OB,Rey
Xitavo	XO 4522E	E3	R	4.5	PV,IL,OB,Rey
Xitavo	XO 4653E	E3,ST	MR	4.6	PV,IL,OB,Rey
Xitavo	XO 4722E	E3	MR	4.7	PV,IL,OB,Rey
Zinesto	Z3903E	E3	R	3.9	DST4

## Footnotes and Abbreviations Descriptions

### Brand Footnotes

---

CK	Identifies a check product included in early- and full-season tests.
GC	Grower Comparison product included by FIRST when space permits.
§	United Soybean Board sponsored entry

### Soybean Cyst Nematode (SCN) Resistance Rating

---

S	susceptible
MR	moderate resistance
R	resistant
n/a	info unavailable

### Soybeans Technologies

---

CONV	Conventional
E3	Enlist™ E3
P	Plenish®
RXF	Roundup Ready 2 XtendFlex®
ST	Sulfonylurea tolerant

---

### Soybeans Seed Treatments\*

---

NA	Not Available
ACi	Acceleron® Standard Insecticide-Fungicide
ACi,IL	Acceleron® Standard Insecticide-Fungicide, ILeVO
AVC,C5,Vi	Avicta® Complete 500, Vibrance
CGT	Chemgro gro-Tek (Chemgro Seed)
CMBV,SA	Cruisermass® Beans, Vibrance®, Salto®
DST4	Dominance 4 ST
Lum,Lu,IL	LumiGEN™, Lumisena™, ILeVO
MAX	Maximize (Meherrin Ag)
PS	MAS Pro-Shield
PV,IL,OB,Rey	Poncho®/Votivo®, ILeVO, Obvius Plus, Relenya®
RP	Radius Premium (Local Seed Co)
SFI	Stine XP F&I

---

\* Seed treatments may include unspecified plant health promoting components.