

Test by: M.A.I.T.S. Mount Joy, PA

2022 Corn Grain Top 30 Harvest Report

Pennsylvania Central [PACE] CENTRE HALL, PA
Wade Wolfe, Center County, PA 16828

All-Season Test	102 - 112 Day CRM B2022PACE03
Top 30 of 48	For Gross Income (Sorted by Yield) Average of (3) Replications
PREV. CROP/HERB:	Soybeans / Glyphosate
SOIL DESCRIPTION:	Hagerstown silt loam, well drained, non-irrigated
SOIL CONDITION:	No-Till, very high P, very high K, 4.7 pH, 3.8% OM, 11.7 CEC
PEST MANAGEMENT:	Halex Gt, Ethos, Glyphosate, Atrazine
FERTILITY - Applied N:	50 Fall, 45 Spring, 60 Sidedress
Applied N-P-K (units):	155-75-165
SEEDED - RATE - ROW:	May 23 34.5 /A 30" spacing
HARVESTED - STAND:	Nov 9 31.0 /A

TEST COMMENTS:

Planting conditions were on the wet side but overall emergence was good. Rainfall was up and down through the summer. May and early June were average but July turned hot and dry. August and September made a comeback and the corn, although short, did produce nice ears and filled out well. Standability at harvest was excellent with only top breakage. The overall rating of the plot is a 7 out of 10. (10=best)

Company/Brand	Product/Brand	Technol.†	RM	Yield Bu/A ↓	Moisture %	Lodging %	Stand (x 1000)	Gross Income \$/Acre	Rank
Dyna-Gro	D50VC09RIB ↗	VT2P	110	210.6	23.7	1	31.6	1498	1
Seedway	SW 1021VT ↗	VT2P	110	206.4	22.9	1	30.6	1472	2
Seed Consultants	SC1093AM ↗	AM	109	206.1	27.2	0	31.8	1448	4
DeKalb	DKC59-82RIB GC ↗	VT2P	109	202.5	21.1	1	30.5	1454	3
Mid-Atlantic	MA8110 ↗	TRE	111	200.7	24.2	0	31.2	1425	6
Revere	0518 VT2PRIB ↗	VT2P	105	198.5	20.5	1	30.7	1428	5
DeKalb	DKC58-64RIB GC ↗	STX	108	197.3	23.9	0	30.8	1402	9
Chemgro	6725RDP ↗	VT2P	107	197.1	24.4	0	29.3	1399	10
Seed Consultants	SC1053AM ↗	AM	105	196.8	21.5	0	30.5	1410	7
Seedway	SW 6540VT ↗	VT2P	109	196.5	24.1	0	30.7	1396	11
Augusta	A1359 VT2P ↗	VT2P	108	196.4	27.6	1	31.5	1378	13
Hubner	H6287RCSS ↗	STX	104	194.7	18.5	0	31.0	1410	8
Augusta	A1961 TRE ↗	TRE	111	194.3	23.6	0	30.8	1382	12
Hefty	H6064 ↗	STX	110	193.3	26.8	0	31.1	1360	16
Seed Consultants	SC1071AM ↗	AM	107	192.4	23.3	1	30.6	1370	15
Mid-Atlantic	MA8128 ↗	VT2P	112	192.3	25.4	1	31.4	1359	17
Augusta	A4463 VT2P ↗	VT2P	113	191.2	24.4	1	31.1	1357	18
Revere	1125 SSX ↗	STX	111	190.4	26.3	0	31.6	1342	21
Revere	0297 VT2PRIB ↗	VT2P	102	190.4	19.7	0	31.2	1373	14
Pioneer	PO732Q GC ↗	QR	107	188.7	23.9	0	31.1	1341	22
Chemgro	7035RDP ↗	VT2P	110	188.5	23.0	0	32.1	1344	20
Hubner	H6358RCSS ↗	STX	103	187.9	21.0	0	31.4	1349	19
Seed Consultants	SC1112AM ↗	AM	111	187.5	25.2	1	29.8	1327	24
Hubner	H6390RCSS ↗	STX	108	185.8	22.8	1	31.2	1326	25
Chemgro	6929RSX ↗	STX	109	185.7	21.8	1	30.8	1329	23
Mid-Atlantic	MA8108 ↗	VT2P	110	184.7	22.9	0	32.0	1317	26
Revere	0918 SSXRIB ↗	STX	109	184.5	22.6	1	30.7	1317	27
Hefty	H6244 ↗	STX	112	184.0	26.3	0	31.9	1297	29
Hefty	H5944 ↗	STX	109	181.5	22.3	1	30.7	1297	30
Seedway	SW 0606VT ↗	VT2P	106	181.3	19.1	0	31.9	1310	28

Robin Kauffman

Averages = **186.9** **23.6** **0** **31.0** **1302**

LSD (0.10) = 14.3 0.9 0

LSD (0.25) = 7.5 0.5 0

Rob Kauffman

rkmait@aol.com, (717) 413-0763

C.V. = 7.3

Historic yield: 184.93 bu/a, 18 yr(s)

Yield & Income Factors:

Base Moisture = 15.0%

Shrink = 1.3

Drying = \$0.025

Prices: GMO = \$7.33

Report Date: 11/12/2022

† See last page for abbreviation descriptions. Dark colored row identifies the check product found in early- and full-season tests. **Bold** yields are significantly above test average by LSD(0.10). **Italicized** brands exceed the grain moisture limit for this test. **ns** = column values not significantly different. ↗ Links to full product yield results at www.firstseedtests.com

©2022, All rights reserved by Elite Field Genetics, LLC

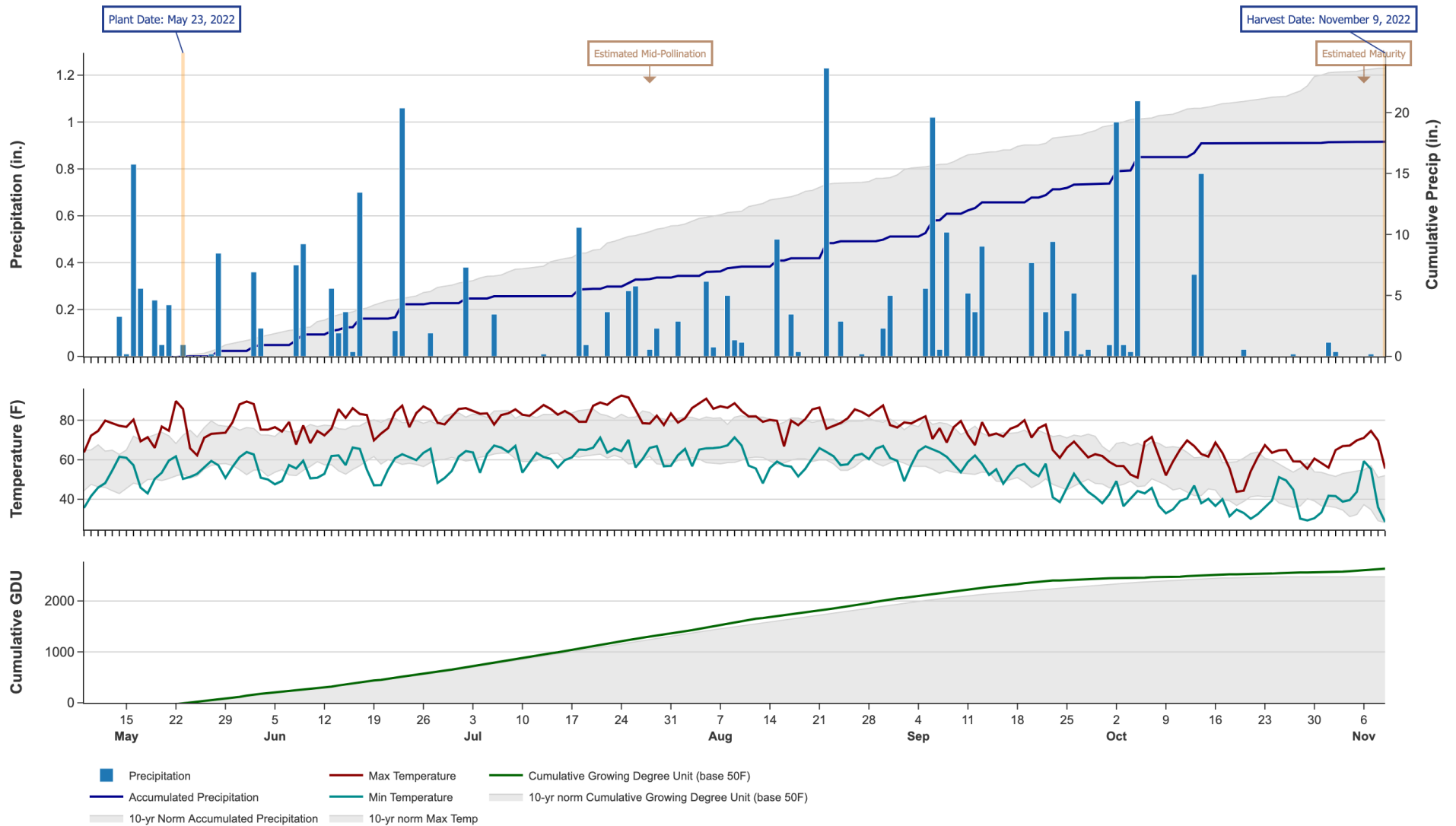
Additional reports available at www.firstseedtests.com

2022 Corn - Pennsylvania Central [PACE]

Weather Conditions Summary at CENTRE HALL, PA

Weather Data Retrieved: 11/12/2022

Monthly Total	May*	Jun	Jul	Aug	Sep	Oct	Nov*	Total
Precip (in) Normal (Diff)	2.3 3.5 (-1.2)	3.9 4.6 (-0.7)	2.1 4.9 (-2.8)	3.4 4.0 (-0.6)	4.3 4.2 (+0.1)	3.4 4.2 (-0.9)	0.1 0.6 (-0.5)	19.4 25.9 (-6.4)
GDU Normal (Diff)	329 266 (+62)	536 510 (+25)	711 676 (+34)	668 608 (+59)	411 401 (+9)	118 152 (-34)	74 0 (+74)	2847 2615 (+231)



* First monthly total starts on the date 14 days prior to planting and final monthly total ends on the harvest date.

Note: Weather information from PRISM Climate Group. Data may be revised by the provider after retrieval. FIRST will not revise or update reports to reflect any weather data changes. For information purposes only.

2022 Corn - Pennsylvania Central [PACE]

All-Season Test Products (48 Total)

Company/Brand	Product/Brand	Technology	RIB	RM	Seed Treat.
Augusta	A1359 VT2P	VT2P	N	108	CM,C2
Augusta	A1459	CONV	N	109	AC,P5V
Augusta	A1560 VT2P	VT2P	N	110	AC,P5V
Augusta	A1961 TRE	TRE	N	111	CM,C2
Augusta	A1962 DGVT2P	VT2P	N	112	CM,C2
Augusta	A4463 VT2P	VT2P	N	113	CM,C2,Vi
Chemgro	6535RDD	VT2PDG	Y	105	AC,P5
Chemgro	6725RDP	VT2P	Y	107	AC250
Chemgro	6815RDP	VT2P	Y	108	AC250
Chemgro	6929RSX	STX	Y	109	AC,P5,B360
Chemgro	7035RDP	VT2P	Y	110	CM,C5,Vi
DeKalb	DKC58-64RIB GC	STX	Y	108	AC,P5
DeKalb	DKC59-82RIB GC	VT2P	Y	109	AC,P5
Dyna-Gro	D45TC55	TRE	Y*	105	AC,P5V
Dyna-Gro	D48VC84	VT2P	N	108	AC,P5V
Dyna-Gro	D50VC09RIB	VT2P	N	110	AC,P5V
Hefty	H5254	STX	N	102	HC
Hefty	H5764	STXP	N	107	HC
Hefty	H5944	STX	N	109	HC
Hefty	H5952	VT2P	N	109	HC
Hefty	H6064	STX	N	110	HC
Hefty	H6134	STX	N	111	HC
Hefty	H6244	STX	N	112	HC
Hubner	H0470S	STX	Y	104	AC,P5V,B360
Hubner	H6287RCSS	STX	Y	104	AC,P5V,B360
Hubner	H6358RCSS	STX	Y	103	AC,P5,B360
Hubner	H6390RCSS	STX	Y	108	AC,P5V,B360
Mid-Atlantic	MA8108	VT2P	Y	110	AC,P2
Mid-Atlantic	MA8110	TRE	N	111	CM,C5
Mid-Atlantic	MA8128	VT2P	Y	112	AC,P2
NK Brand	NK0696-D	D	Y	106	AVC,C2,Vi,Va
NK Brand	NK1026-DVZ	VZ	Y	110	AVC,C2,CM,C5,Vi,Va
NK Brand	NK1082-DV	DV	Y	110	AVC,C2,CM,C5,Vi,Va
NK Brand	NK1188-D	D	Y	111	AVC,C2,CM,C5,Vi,Va
Pioneer	PO732Q GC	QR	Y	107	Lum, L1
Pioneer	PO924Q GC	QR	Y	109	Lum
Revere	0297 VT2PRIB	VT2P	Y	102	RA
Revere	0518 VT2PRIB	VT2P	Y	105	RA
Revere	0707 DGVT2PRIB	VT2PDG	Y	107	RA
Revere	0918 SSXRIB	STX	Y	109	RA
Revere	1125 SSX	STX	Y	111	RA
Seed Consultants	SC1053AM	AM	Y	105	Lum

Company/Brand	Brand/Product	Technology	RIB	RM	Seed Treat.
Seed Consultants	SC1071AM	AM	Y	107	Lum, L1
Seed Consultants	SC1093AM	AM	Y	109	Lum, L1
Seed Consultants	SC1112AM	AM	Y	111	Lum, L1
Seedway	SW 0606VT	VT2P	Y	106	AC,P5
Seedway	SW 1021VT	VT2P	Y	110	AC,P5
Seedway	SW 6540VT	VT2P	Y	109	AC,P5

* FIRST does not inspect products for refuge blend. N* indicates the product was entered without a refuge component by the sponsoring seed company. Prior year entries may contain refuge blend.

Footnotes and Abbreviations Descriptions

Brand Footnotes

^	Innotech™ brand seed is distributed by Rob-See-Co, LLC. Power Plus® brand seed is distributed by Burrus. Innotech™ is a trademark of Syngenta. Power Plus® is a registered trademark of Corteva Agriscience.
CK	Identifies a check product included in early- and full-season tests.
GC	Grower Comparison product included by FIRST when space permits.

Corn Technologies

AM	Optimum® AcreMax®
CONV	Conventional
D	Duracade™ (CB,HX,RW,RW2,LL,GT), formerly Agrisure Duracade® 5122
DV	DuracadeViptera™ (Vip,CB,HX,RW,RW2,LL,GT), formerly Agrisure Duracade® 5222
QR	Qrome™
STX	SmartStax®
STXP	SmartStax® Pro
TRE	Trecepta®
VT2P	VT Double PRO®
VT2PDG	VT Double PRO® DroughtGard®
VZ	Viptera™ Z3 (Vip,CB,VTP,LL,GT), formerly Agrisure Viptera® 3330

NOTE: The refuge component genetics may vary in a refuge blend seed product.

Corn Seed Treatments*

NA	Not Available
AC250	Acceleron® 250
AC,P2	Acceleron® 250
AC,P5	Acceleron® 500
AC,P5,B360	Acceleron® 500 with BioRise™ B-360 ST
AC,P5V	Acceleron® Poncho 500/Votivo
AC,P5V,B360	Acceleron® Poncho 500/Votivo with B-360 SAT
AVC,C2,CM,C5,Vi,Va	Avicta® Complete 250, CruiserMaxx 500, Vibrance®, Vayantis®
AVC,C2,Vi,Va	Avicta® Complete 250, Vibrance®, Vayantis®
CM,C2	CruiserMaxx® 250
CM,C2,Vi	CruiserMaxx® 250 with Vibrance
CM,C5	Cruisermaxx® 500
CM,C5,Vi	CruiserMaxx® 500 with Vibrance
HC	Hefty Complete
Lum	LumiGEN™ (Corteva Agriscience)
Lum, L1	(2022) LumiGEN, Lumisure 1250
RA	Radius 500 (Local Seed Co)

* Seed treatments may include unspecified plant health promoting components.