

Test by: Southern MN FIRST New Richland, MN

2022 Corn Grain Top 30 Harvest Report

Minnesota Southeast [MNSE] CANNON FALLS, MN
Hernke Inc., Marc Hernke, Goodhue County, MN 55009

Ultra Early-Season Test 92 - 96 Day CRM
B2022MNSE11u

Top 30 of 30 For Gross Income
(Sorted by Yield)
Average of (3) Replications

PREV. CROP/HERB: Soybeans / Sonic, Enlist One,
Roundup

SOIL DESCRIPTION: Port Byron Silt Loam silt loam,
mod. well drained, non-irrigated

SOIL CONDITION: Conventional W/ Fall Till, very
high P, very high K, 7.2 pH,
3.6% OM, 16.3 CEC

PEST MANAGEMENT: Force, Impact, Atrazine, Trivapro
Fungicide At Tassel

FERTILITY - Applied N: 140 Fall, 12# Sulfur

Applied N-P-K (units): 140-0-150

SEEDED - RATE - ROW: May 19 34.8 /A 30" spacing

HARVESTED - STAND: Nov 1 32.6 /A

TEST COMMENTS:

A cooler and wetter spring was followed by a very dry summer. Marc told me, "occasionally we had a rain at the right time. Fall was hotter than normal." The summer provided many sunny days, but rainfall was 33% less than the 10-year average for the growing season. Plants were very healthy looking at harvest time. Even though a frost occurred on Sept 28th, yield impact may have been lessened by the plot being located on higher ground.

Company/Brand	Product/Brand	Technol.†	RM	Yield Bu/A ↓	Moisture %	Lodging %	Stand (x 1000)	Gross Income \$/Acre	Rank
Augusta	A1946-3120 ↗	AA	95	279.9	17.3	0	33.0	1863	1
Dairyland	DS-3550AM ↗	AM	95	272.6	16.8	0	33.5	1820	2
Augusta	A2545-5222 ↗	DV	95	270.1	17.5	0	30.4	1797	3
Pioneer	P9619AM GC ↗	AM	96	260.4	17.5	0	33.5	1732	5
Dairyland	DS-3601AM ↗	AM	96	259.0	16.1	0	33.0	1737	4
Titan Pro	91-95 ↗	CONV	95	257.9	17.1	0	33.5	1720	6
Augusta	A1943-3120 ↗	AA	93	257.9	17.8	0	32.1	1712	7
Gold Country	96-49RSS ↗	STX	96	257.6	17.7	0	33.1	1711	8
Dairyland	DS-3477AM ↗	AM	94	256.5	17.0	0	33.5	1711	9
Dairyland	DS-3366AM ↗	AM	93	252.1	16.5	0	33.0	1687	11
Dairyland	DS-3203AM ↗	AM	92	251.9	16.0	0	32.1	1690	10
Anderson	7865 ↗	CONV	95	247.4	16.6	0	32.6	1654	13
Prairie Hybrids	410 GC ↗	CONV	91	247.4	16.2	0	33.9	1658	12
Titan Pro	85-96 ↗	CONV	96	246.9	16.5	0	34.4	1651	14
Renk	RK502SSTX ↗	STX	95	246.5	16.8	0	30.8	1646	15
Renk	RK561DGV2P ↗	VT2PDG	95	244.6	17.3	0	33.5	1628	16
Viking	52-96 ↗	CONV	96	242.1	16.8	0	31.7	1616	17
Viking	42-92 ↗	CONV	92	239.9	16.1	0	32.2	1609	18
Federal	4580 VT2PRIB ↗	VT2P	95	239.6	17.6	0	32.6	1592	20
Renk	RK444VT2P ↗	VT2P	93	239.4	16.6	0	32.6	1601	19
DeKalb	DKC45-94RIB GC ↗	STX	95	237.9	16.5	0	32.2	1591	21
Federal	4520 VT2PDG ↗	VT2PDG	95	236.7	16.9	0	33.1	1580	24
Jacobsen	JS7045VT2PR ↗	VT2P	95	236.6	16.5	0	31.7	1583	22
Gold Country	95-36RSS ↗	STX	95	236.3	16.4	0	33.9	1582	23
Federal	4680 VT2PRIB ↗	VT2P	96	235.5	16.5	0	33.5	1575	25
Anderson	7422 ↗	CONV	92	235.4	16.5	0	30.8	1575	26
LG Seeds	LG46C73VT2PRIB GC ↗	VT2P	96	234.9	17.3	0	33.9	1564	27
Wyffels	W1306 ↗	VT2P	93	232.3	17.0	0	29.0	1549	28
Pioneer	P9492AM GC ↗	AM	94	230.6	16.2	0	33.5	1545	29
LG Seeds	LG44C27STXRIB GC ↗	STX	94	213.2	16.8	0	32.6	1424	30

Mark Querna

Mark Querna

mark.querna@firstseedtests.com, (507) 380-9920

Averages = **246.6** **16.8** **0** **32.6** **1647**

LSD (0.10) = 15.2 0.5 ns

LSD (0.25) = 7.9 0.3 ns

C.V. = 5.8

Historic yield: 214.47 bu/a, 21 yr(s)

Yield & Income Factors:

Base Moisture = 15.0%

Shrink = 1.3

Drying = \$0.04

Prices: GMO = \$6.75

Report Date: 11/01/2022

† See last page for abbreviation descriptions. Dark colored row identifies the check product found in early- and full-season tests. **Bold** yields are significantly above test average by LSD(0.10). **Italicized** brands exceed the grain moisture limit for this test. **ns** = column values not significantly different. ↗ Links to full product yield results at www.firstseedtests.com

©2022, All rights reserved by Elite Field Genetics, LLC

Additional reports available at www.firstseedtests.com

Test by: Southern MN FIRST New Richland, MN

2022 Corn Grain Top 30 Harvest Report

Minnesota Southeast [MNSE] CANNON FALLS, MN
Herne Inc., Marc Herne, Goodhue County, MN 55009

Early-Season Test	97 - 102 Day CRM B2022MNSE11a
Top 30 of 72	For Gross Income (Sorted by Yield) Average of (3) Replications
PREV. CROP/HERB:	Soybeans / Sonic, Enlist One, Roundup
SOIL DESCRIPTION:	Port Byron Silt Loam silt loam, mod. well drained, non-irrigated
SOIL CONDITION:	Conventional W/ Fall Till, very high P, very high K, 7.2 pH, 3.6% OM, 16.3 CEC
PEST MANAGEMENT:	Force, Impact, Atrazine, Trivapro Fungicide At Tassel
FERTILITY - Applied N:	140 Fall, 12# Sulfur
Applied N-P-K (units):	140-0-150
SEEDED - RATE - ROW:	May 19 34.8 /A 30" spacing
HARVESTED - STAND:	Nov 1 32.9 /A

TEST COMMENTS:

A cooler and wetter spring was followed by a very dry summer. Marc told me, "occasionally we had a rain at the right time. Fall was hotter than normal." The summer provided many sunny days, but rainfall was 33% less than the 10-year average for the growing season. Plants were very healthy looking at harvest time. Even though a frost occurred on Sept 28th, yield impact may have been lessened by the plot being located on higher ground.

Company/Brand	Product/Brand	Technol.†	RM	Yield Bu/A ↓	Moisture %	Lodging %	Stand (x 1000)	Gross Income \$/Acre	Rank
Mustang	62600 ↗	VT2P	100	278.1	19.7	0	32.2	1825	1
Thunder	T6398 TRE ↗	TRE	98	272.6	18.1	0	32.2	1806	2
Renk	RK600VT2P ↗	VT2P	100	268.9	18.2	0	33.0	1781	3
Federal	4830 TRE ↗	TRE	98	267.1	17.2	0	31.7	1779	4
Titan Pro	84-01 ↗	CONV	101	266.8	17.9	0	32.6	1770	5
Viking	46-02 ↗	CONV	102	266.6	19.1	0	33.0	1756	6
Latham	LH 5209 DV ↗	DV	102	265.9	19.8	0	33.5	1744	10
Prairie Hybrids	1663 GC ↗	CONV	101	264.7	20.5	0	32.6	1728	17
Dairyland	DS-4219AM ↗	AM	102	264.5	19.3	0	33.5	1740	13
Dairyland	DS-3727AM ↗	AM	97	264.4	18.5	0	33.5	1748	8
Titan Pro	11-98 2P ↗	VT2P	98	264.3	18.6	0	32.2	1746	9
Integra	5280 VT2PRIB ↗	VT2P	102	264.1	18.9	0	33.1	1741	12
Titan Pro	26-02 PCE ↗	PC,E	102	263.7	20.5	1	33.5	1722	19
Hefty	H5055 ↗	TRE	100	263.6	17.6	0	33.5	1752	7
Thunder	T6298 VT2P ↗	VT2P	98	262.4	17.6	0	33.5	1744	11
Pioneer	P0075AM GC ↗	AM	100	262.3	18.8	1	33.5	1730	15
Integra	4993 TRERIB ↗	TRE	99	261.3	17.7	0	33.5	1735	14
Hefty	H5254 ↗	STX	102	261.1	19.3	0	31.7	1717	21
Viking	44-98 ↗	CONV	98	260.9	18.5	0	33.5	1725	18
Dairyland	DS-3900AM ↗	AM	99	260.4	19.0	0	33.1	1716	22
Mustang	4397 ↗	VT2P	97	260.3	17.6	0	34.4	1730	16
Golden Harvest	G97A36-V ↗	V	97	259.8	18.9	0	33.5	1713	23
Renk	RK597SSPRO ↗	STXP	99	259.6	18.3	0	33.5	1718	20
NuTech	60A4AM ↗	AM	100	259.3	19.1	0	33.5	1708	24
Prairie Hybrids	1231 GC ↗	CONV	100	258.3	19.4	0	33.1	1698	29
Thunder	T6902 VT2P ↗	VT2P	102	257.9	19.1	0	30.8	1699	27
Renk	RK590VT2P ↗	VT2P	98	257.3	18.8	0	32.2	1698	30
Federal	5005 VT2P ↗	VT2P	100	257.2	18.5	0	33.1	1700	26
Prairie Hybrids	1320 GC ↗	CONV	97	257.2	18.4	0	32.2	1701	25
Anderson	507R ↗	RR2	102	257.2	18.6	0	31.3	1699	28
DEKALB	DKC52-18RIB CK	STX	102	250.9	19.3	0	32.2	1650	45

Mark Querna

Mark Querna

mark.querna@firstseedtests.com, (507) 380-9920

Averages = **253.3** **18.7** **0** **32.9** **1673**

LSD (0.10) = 11.7 0.6 0

LSD (0.25) = 6.1 0.3 0

C.V. = 4.4

Historic yield: 214.47 bu/a, 21 yr(s)

Yield & Income Factors: Base Moisture = 15.0% Shrink = 1.3 Drying = \$0.04 Prices: GMO = \$6.75

Report Date: 11/01/2022

† See last page for abbreviation descriptions. Dark colored row identifies the check product found in early- and full-season tests. **Bold** yields are significantly above test average by LSD(0.10). **Italicized** brands exceed the grain moisture limit for this test. **ns** = column values not significantly different. ↗ Links to full product yield results at www.firstseedtests.com

©2022, All rights reserved by Elite Field Genetics, LLC

Additional reports available at www.firstseedtests.com

Test by: Southern MN FIRST New Richland, MN

2022 Corn Grain Top 30 Harvest Report

Minnesota Southeast [MNSE] CANNON FALLS, MN
Hernke Inc., Marc Hernke, Goodhue County, MN 55009

Full-Season Test	103 - 107 Day CRM B2022MNSE11b
Top 30 of 42	For Gross Income (Sorted by Yield) Average of (3) Replications
PREV. CROP/HERB:	Soybeans / Sonic, Enlist One, Roundup
SOIL DESCRIPTION:	Port Byron Silt Loam silt loam, mod. well drained, non-irrigated
SOIL CONDITION:	Conventional W/ Fall Till, very high P, very high K, 7.2 pH, 3.6% OM, 16.3 CEC
PEST MANAGEMENT:	Force, Impact, Atrazine, Trivapro Fungicide At Tassel
FERTILITY - Applied N:	140 Fall, 12# Sulfur
Applied N-P-K (units):	140-0-150
SEEDED - RATE - ROW:	May 19 34.8 /A 30" spacing
HARVESTED - STAND:	Nov 1 32.8 /A

TEST COMMENTS:

A cooler and wetter spring was followed by a very dry summer. Marc told me, "occasionally we had a rain at the right time. Fall was hotter than normal." The summer provided many sunny days, but rainfall was 33% less than the 10-year average for the growing season. Plants were very healthy looking at harvest time. Even though a frost occurred on Sept 28th, yield impact may have been lessened by the plot being located on higher ground.

Company/Brand	Product/Brand	Technol.†	RM	Yield Bu/A ↓	Moisture %	Lodging %	Stand (x 1000)	Gross Income \$/Acre	Rank
Dairyland	DS-4510Q ↗	QR	105	276.5	19.3	0	33.5	1819	1
Gold Country	107-83R2P ↗	VT2P	107	275.2	20.3	0	33.1	1799	3
Hefty	H5655 ↗	TRE	106	275.2	19.9	0	32.6	1804	2
Latham	LH 5725 VT2P RIB ↗	VT2P	107	274.3	20.2	0	32.6	1794	4
Hefty	H5764 ↗	STXP	107	273.1	19.7	0	33.1	1792	5
Prairie Hybrids	4470 GC ↗	CONV	106	271.8	20.9	0	33.9	1771	6
Titan Pro	24-05 PCE ↗	PC,E	105	270.4	21.0	0	33.9	1761	8
Gold Country	106-96RSS ↗	STX	106	269.7	19.7	0	33.5	1770	7
Viking	72-06 ↗	CONV	106	268.8	21.1	0	33.5	1749	11
Gold Country	104-75RSP ↗	STXP	104	268.3	20.9	0	33.1	1748	12
Mustang	78505 ↗	STX	105	267.7	20.3	0	33.5	1751	10
NuTech	66C2Q ↗	QR	106	266.8	20.2	0	33.1	1745	13
Renk	RK625DGVT2P ↗	VT2PDG	104	265.4	18.3	0	31.7	1757	9
Prairie Hybrids	3259 GC ↗	CONV	105	265.0	19.5	0	33.5	1741	16
Hi Fidelity Genetics	HFG1071 ↗	CONV	105	264.8	19.3	0	33.0	1742	15
Hefty	H5442 ↗	VT2P	104	264.7	19.0	0	32.2	1744	14
Latham	LH 5646 PCE ↗	PC,E	106	264.3	21.2	0	32.2	1718	21
Renk	RK720TRE ↗	TRE	106	264.2	20.1	0	33.5	1730	17
Enestvedt	E598 ↗	CONV	106	263.8	19.8	0	32.6	1730	18
Augusta	A1956 ↗	PC,E	106	263.6	21.9	0	33.1	1706	24
Renk	RK710DGVT2P ↗	VT2PDG	107	263.3	19.9	0	33.1	1726	19
Pioneer	P0688AM GC ↗	AM	106	262.2	20.5	0	32.2	1713	23
Viking	84-05 ↗	CONV	105	262.2	19.7	0	33.5	1720	20
NuTech	64B5Q ↗	QR	104	261.9	19.8	0	31.7	1718	22
Hefty	H5666 ↗	PC,E	106	261.3	21.6	0	32.6	1695	25
Titan Pro	26-03 5222 ↗	DV	103	257.5	20.9	0	33.5	1678	27
Dyna-Gro	D44SS54RIB GC ↗	STX	104	257.2	20.2	0	34.4	1683	26
Renk	RK715SSTX ↗	STX	105	255.2	20.3	0	33.5	1668	28
Mustang	78706 ↗	STX	106	252.3	19.9	0	32.9	1653	29
Pioneer	P0507AM GC ↗	AM	105	252.0	21.4	0	34.4	1636	30
DEKALB	DKC52-18RIB CK	STX	102	243.0	19.9	0	32.1	1593	36
				Averages =	258.8	20.3	0	32.8	1692
				LSD (0.10) =	13.5	0.8	ns		
				LSD (0.25) =	7.1	0.4	ns		
				C.V. =	5.0				
				Historic yield: 214.47 bu/a, 21 yr(s)					

Mark Querna

Mark Querna

mark.querna@firstseedtests.com, (507) 380-9920

Yield & Income Factors:

Base Moisture = 15.0%

Shrink = 1.3

Drying = \$0.04

Prices: GMO = \$6.75

Report Date: 11/01/2022

† See last page for abbreviation descriptions. Dark colored row identifies the check product found in early- and full-season tests. **Bold** yields are significantly above test average by LSD(0.10). **Italicized** brands exceed the grain moisture limit for this test. **ns** = column values not significantly different. ↗ Links to full product yield results at www.firstseedtests.com

©2022, All rights reserved by Elite Field Genetics, LLC

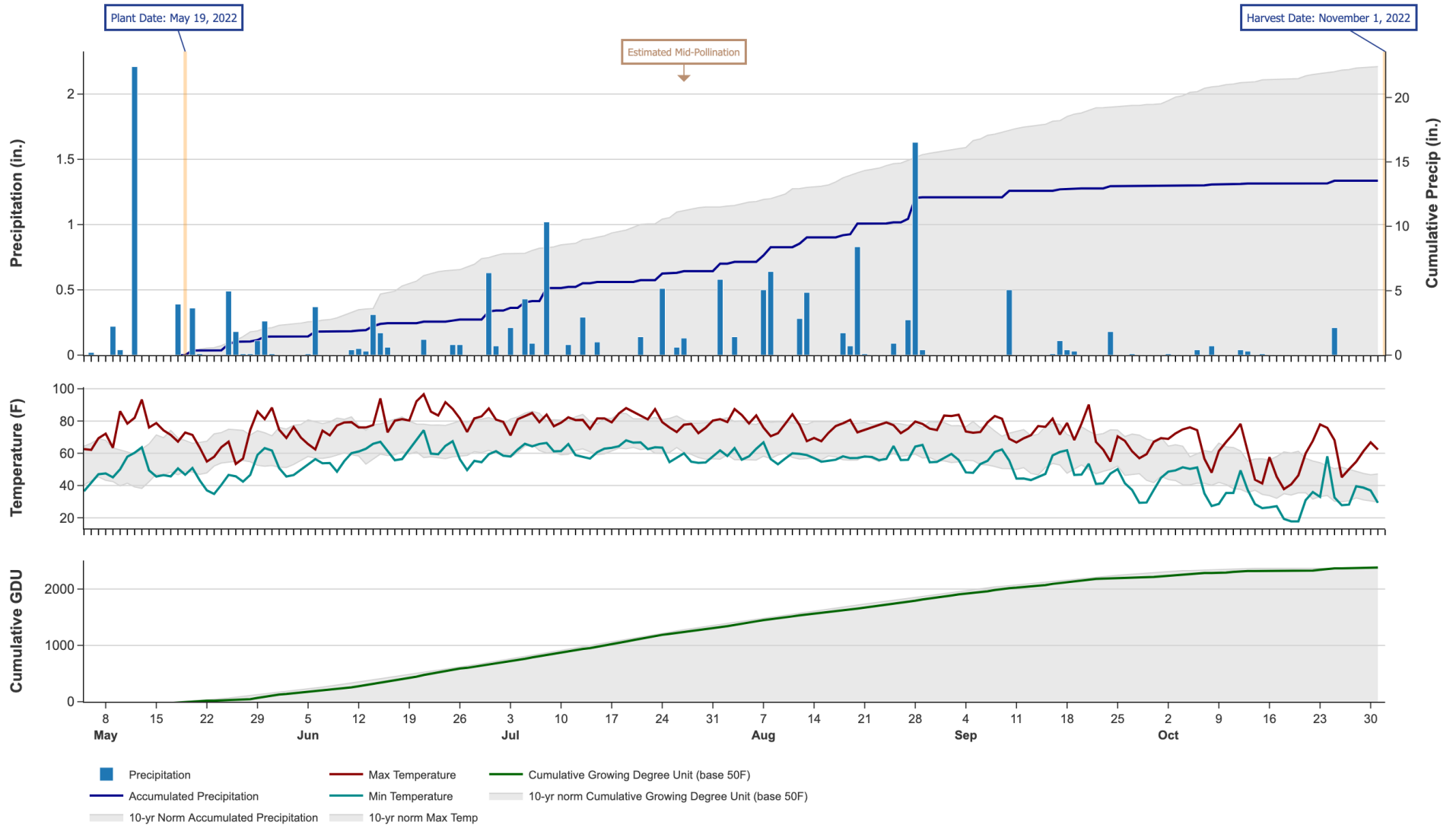
Additional reports available at www.firstseedtests.com

2022 Corn - Minnesota Southeast [MNSE]

Weather Conditions Summary at CANNON FALLS, MN

Weather Data Retrieved: 11/01/2022

Monthly Total	May*	Jun	Jul	Aug	Sep	Oct*	Total
Precip (in) Normal (Diff)	4.3 4.4 (-0.1)	1.9 5.4 (-3.5)	3.1 3.9 (-0.8)	5.7 4.2 (+1.5)	0.9 3.7 (-2.8)	0.4 2.9 (-2.5)	16.4 24.6 (-8.2)
GDU Normal (Diff)	300 262 (+37)	546 552 (-6)	640 653 (-13)	544 562 (-18)	371 382 (-11)	166 70 (+95)	2567 2483 (+83)



* First monthly total starts on the date 14 days prior to planting and final monthly total ends on the harvest date.

Note: Weather information from PRISM Climate Group. Data may be revised by the provider after retrieval. FIRST will not revise or update reports to reflect any weather data changes. For information purposes only.

2022 Corn - Minnesota Southeast [MNSE]

Ultra Early-Season Test Products (30 Total)

Company/Brand	Product/Brand	Technology	RIB	RM	Seed Treat.
Anderson	7422	CONV	N*	92	Treated
Anderson	7865	CONV	N	95	Treated
Augusta	A1943-3120	AA	N	93	AC,P5V
Augusta	A1946-3120	AA	N	95	AC,P5V
Augusta	A2545-5222	DV	N	95	CM,C2,Vi
Dairyland	DS-3203AM	AM	Y	92	Lum, L1
Dairyland	DS-3366AM	AM	Y	93	Lum, L1
Dairyland	DS-3477AM	AM	Y	94	Lum, L1
Dairyland	DS-3550AM	AM	Y	95	Lum, L1
Dairyland	DS-3601AM	AM	Y	96	Lum, L1
DeKalb	DKC45-94RIB GC	STX	Y	95	AC,P5
Federal	4520 VT2PDG	VT2PDG	N	95	AC,P2,MAG
Federal	4580 VT2PRIB	VT2P	Y	95	AC,P2,MAG
Federal	4680 VT2PRIB	VT2P	Y	96	AC,P2,MAG
Gold Country	95-36RSS	STX	Y	95	AC,P5V,EDC-B
Gold Country	96-49RSS	STX	Y	96	AC,P5V,EDC-B
Jacobsen	JS7045VT2PR	VT2P	Y	95	AC,P2,Va
LG Seeds	LG44C27STXRIB GC	STX	Y	94	AC,P5V
LG Seeds	LG46C73VT2PRIB GC	VT2P	Y	96	Treated
Pioneer	P9492AM GC	AM	Y	94	Lum
Pioneer	P9619AM GC	AM	N	96	Lum, L1
Prairie Hybrids	410 GC	CONV	N	91	MQ,In
Renk	RK444VT2P	VT2P	N	93	AC,P5V
Renk	RK502SSTX	STX	N	95	AC,P5V
Renk	RK561DGVT2P	VT2PDG	N	95	AC,P2
Titan Pro	85-96	CONV	N	96	AC,P2
Titan Pro	91-95	CONV	N	95	CM,C2
Viking	42-92	CONV	N	92	CM,C2,Sb
Viking	52-96	CONV	N	96	CM,C2,Sb
Wyffels	W1306	VT2P	N	93	Treated

* FIRST does not inspect products for refuge blend. N* indicates the product was entered without a refuge component by the sponsoring seed company. Prior year entries may contain refuge blend.

2022 Corn - Minnesota Southeast [MNSE]

Early-Season Test Products (72 Total)

Company/Brand	Product/Brand	Technology	RIB	RM	Seed Treat.
Anderson	507R	RR2	N	102	Treated
Anderson	528TRE	TRE	N	102	Treated
Anderson	6909	CONV	N	98	Treated
Anderson	726VT2P	VT2P	N	98	AC,P2
Anderson	728TRE	TRE	N	98	Treated
Augusta	A2148-3220-EZ	V	Y	98	CM,C2
Augusta	A22-250	AA	Y	100	CM,C2,Vi
Augusta	A3052-5222-EZ	DV	Y	102	CM,C2,Vi
Dairyland	DS-3727AM	AM	Y	97	Lum, L1
Dairyland	DS-3900AM	AM	Y	99	Lum, L1
Dairyland	DS-3959Q	QR	Y	99	Lum, L1
Dairyland	DS-4014Q	QR	Y	100	Lum, L1
Dairyland	DS-4219AM	AM	Y	102	Lum, L1
DeKalb	DKC51-99RIB GC	TRE	Y	101	AC,P5
DeKalb	DKC52-18RIB CK	STX	Y	102	AC,P5V,EDC-EL
Dyna-Gro	D42SS20RIB GC	STX	Y*	102	AC,P5V
Enestvedt	E539DP RIB	VT2P	Y	102	AC,P2
Epley	E1040	CONV	N	100	Vi5
Federal	4830 TRE	TRE	Y	98	AC,P5V,MAG
Federal	5005 VT2P	VT2P	Y	100	AC,P2,MAG
Federal	5120 TRE	TRE	Y	101	AC,P2,MAG
Federal	5280 VT2PRIB	VT2P	Y	102	AC,P2,MAG
Gold Country	100-19TRE	TRE	Y	100	AC,P5V,B360
Gold Country	101-51RSP	STXP	Y	101	AC,P5V,B360
Gold Country	98-15RSS	STX	Y	98	AC,P5V,EDC-B
Gold Country	99-01R2P	VT2P	N	99	AC,P5V,B300
Golden Harvest	G00A97-AA	AA	Y	100	AVC,C2,Vi,Va
Golden Harvest	G97A36-V	V	Y	97	AVC,C2,Vi,Va
Hefty	H4732	VT2P	N	97	HC
Hefty	H4942 RIB	VT2P	Y	99	HC
Hefty	H5055	TRE	N	100	HC
Hefty	H5062	VT2P	N	100	HC
Hefty	H5254	STX	N	102	HC
Integra	4993 TRERIB	TRE	N	99	AC,P5V
Integra	5052 VT2PRIB	VT2P	Y	100	AC,P5V,SU+Zn
Integra	5280 VT2PRIB	VT2P	Y	102	AC,P5V,SU+Zn
Latham	LH 4937 VT2P RIB	VT2P	Y	99	AC,P2
Latham	LH 5047 VT2P RIB	VT2P	Y	100	AC,P2
Latham	LH 5159 SS RIB	STX	Y	101	AC,P5V,Va
Latham	LH 5209 DV	DV	Y	102	AVC,C2,Vi,Va
Latham	LH 5245 VT2P RIB	VT2P	Y	102	AC,P2
LG Seeds	LG47C77STXRIB GC	STX	Y	97	AC

Company/Brand	Brand/Product	Technology	RIB	RM	Seed Treat.
Mustang	4397	VT2P	Y	97	CM,C2,St,SU
Mustang	52500	VT2P	N	100	Treated
Mustang	5800	STX	Y	100	CM,C2
Mustang	62600	VT2P	N	100	Treated
NuTech	57A4Q	QR	Y	97	Lum, L1
NuTech	59A1AM	AM	Y	99	Lum, L1
NuTech	60A2Q	QR	Y	100	Lum, L1
NuTech	60A4AM	AM	Y	100	Lum, L1
Pioneer	P0075AM GC	AM	Y	100	Lum
Pioneer	P0220AM GC	AM	Y	102	Lum
Prairie Hybrids	1231 GC	CONV	N	100	MQ,In
Prairie Hybrids	1320 GC	CONV	N	97	MQ,In
Prairie Hybrids	1663 GC	CONV	N	101	MQ,In
Renk	RK579DGV2P	VT2PDG	Y	99	AC,P2
Renk	RK590VT2P	VT2P	N	98	AC,P2
Renk	RK597SSPRO	STXP	N	99	AC,P5V
Renk	RK600VT2P	VT2P	N	100	AC,P2
Renk	RK615SSTX	STX	Y	102	AC,P5V
Thunder	T6298 VT2P	VT2P	Y	98	AC,P2
Thunder	T6300 VT2P	VT2P	Y	100	AC,P5V,EDC-B
Thunder	T6398 TRE	TRE	Y	98	AC,P2
Thunder	T6902 VT2P	VT2P	Y	102	CM,C2,Vi
Thunder	T6999 VT2P	VT2P	Y	99	AC,P2
Titan Pro	11-98 2P	VT2P	Y	98	AC,P2
Titan Pro	23-98 SS	STX	Y	98	AC,P5V
Titan Pro	26-02 PCE	PC,E	N	102	CM,C2
Titan Pro	84-01	CONV	N	101	CM,C2
Viking	44-98	CONV	N	98	CM,C2,Sb
Viking	46-02	CONV	N	102	CM,C2,Sb
Viking	99-00	CONV	N	100	CM,C2,Sb

* FIRST does not inspect products for refuge blend. N* indicates the product was entered without a refuge component by the sponsoring seed company. Prior year entries may contain refuge blend.

2022 Corn - Minnesota Southeast [MNSE]

Full-Season Test Products (42 Total)

Company/Brand	Product/Brand	Technology	RIB	RM	Seed Treat.
Anderson	472SRC	STX	N	106	AC,P5,B360
Augusta	A1956	PC,E	N	106	AC,P5V
Dairyland	DS-4510Q	QR	Y	105	Lum, L1
Dairyland	DS-4567Q	QR	Y	105	Lum, L1
DeKalb	DKC52-18RIB CK	STX	Y	102	AC,P5V,EDC-EL
DeKalb	DKC54-38RIB GC	STX	Y	104	AC,P5
DeKalb	DKC56-65RIB GC	STX	Y	106	AC,P5
Dyna-Gro	D44SS54RIB GC	STX	N*	104	AC,P5V
Enestvedt	E598	CONV	N	106	CM,C2,Vi
Gold Country	104-75RSP	STXP	Y	104	AC,P5,B360
Gold Country	106-96RSS	STX	Y	106	AC,P5V,EDC-B
Gold Country	107-83R2P	VT2P	Y	107	AC,P5V,EDC-B
Golden Harvest	G06A27-D	D	Y	106	AVC,C2,Vi,Va
Golden Harvest	G07G73-AA	AA	Y	107	AVC,C2,Vi,Va
Hefty	H5442	VT2P	N	104	HC
Hefty	H5655	TRE	N	106	HC
Hefty	H5666	PC,E	N	106	HC
Hefty	H5764	STXP	N	107	HC
Hi Fidelity Genetics	HFG1071	CONV	N	105	AM,I2
Latham	LH 5377 VT2P RIB	VT2P	Y	103	AC,P2
Latham	LH 5487 VT2P RIB	VT2P	Y*	104	AC,P2
Latham	LH 5559 SS RIB	STX	Y	105	AC,P5
Latham	LH 5646 PCE	PC,E	N	106	AVC,C2,Vi,Va
Latham	LH 5725 VT2P RIB	VT2P	Y	107	AC,P2
Mustang	78505	STX	N	105	AC,P5V
Mustang	78706	STX	N	106	AC,P5
NuTech	64B5Q	QR	Y	104	Lum, L1
NuTech	64D1AM	AM,AQ	Y	104	Lum, L1
NuTech	65B2Q	QR	Y	105	Lum, L1
NuTech	66C2Q	QR	Y	106	Lum, L1
Pioneer	P0507AM GC	AM	Y	105	Lum
Pioneer	P0688AM GC	AM	Y	106	Lum
Prairie Hybrids	3259 GC	CONV	N	105	MQ,In
Prairie Hybrids	4470 GC	CONV	N	106	MQ,In
Renk	RK625DGV2P	VT2PDG	N	104	AC,P2
Renk	RK710DGV2P	VT2PDG	Y	107	AC,P2
Renk	RK715SSTX	STX	Y	105	AC,P5V
Renk	RK720TRE	TRE	N	106	AC,P5V
Titan Pro	24-05 PCE	PC,E	N	105	CM,C2
Titan Pro	26-03 5222	DV	Y	103	AC,P2
Viking	72-06	CONV	N	106	CM,C2,Sb
Viking	84-05	CONV	N	105	CM,C2,Sb

* FIRST does not inspect products for refuge blend. N* indicates the product was entered without a refuge component by the sponsoring seed company. Prior year entries may contain refuge blend.

Footnotes and Abbreviations Descriptions

Brand Footnotes

^	Innotech™ brand seed is distributed by Rob-See-Co, LLC. Power Plus® brand seed is distributed by Burrus. Innotech™ is a trademark of Syngenta. Power Plus® is a registered trademark of Corteva Agriscience.
CK	Identifies a check product included in early- and full-season tests.
GC	Grower Comparison product included by FIRST when space permits.

Corn Technologies

AA	Agrisure® Above (CB,HX,LL,GT), formerly Agrisure® 3120
AM	Optimum® AcreMax®
AQ	Optimum® AQUAmax®
CONV	Conventional
D	Duracade™ (CB,HX,RW,RW2,LL,GT), formerly Agrisure Duracade® 5122
DV	DuracadeViptera™ (Vip,CB,HX,RW,RW2,LL,GT), formerly Agrisure Duracade® 5222
E	Enlist™ (2,4-D, glyphosate, fop herbicide tolerance)
PC	PowerCore™
QR	Qrome™
RR2	Roundup Ready® 2 Corn
STX	SmartStax®
STXP	SmartStax® Pro
TRE	Trecepta®
V	Viptera™ (Vip,CB,HX,LL,GT), formerly Agrisure Viptera® 3220
VT2P	VT Double PRO®
VT2PDG	VT Double PRO® DroughtGard®

NOTE: The refuge component genetics may vary in a refuge blend seed product.

Corn Seed Treatments*

NA	Not Available
AC	Acceleron® unspecified
AC,P2	Acceleron® 250
AC,P2,MAG	Acceleron® 250, Federal ArmourGuard
AC,P2,Va	Acceleron® 250, Vayantis®
AC,P5	Acceleron® 500
AC,P5,B360	Acceleron® 500 with BioRise™ B-360 ST
AC,P5V	Acceleron® Poncho 500/Votivo
AC,P5V,B300	Acceleron® Poncho 500/Votivo with B-300 SAT
AC,P5V,B360	Acceleron® Poncho 500/Votivo with B-360 SAT
AC,P5V,EDC-B	Acceleron® BASIC Poncho 500/Votivo with Enhanced Disease Control
AC,P5V,EDC-EL	Acceleron® ELITE Poncho 500/Votivo with Enhanced Disease Control
AC,P5V,MAG	Acceleron® Poncho 500/Votivo, Federal ArmorGuard
AC,P5V,SU+Zn	Acceleron® Poncho 500/Votivo, StepUp SP, StepUp Zn
AC,P5V,Va	Acceleron® Poncho 500/Votivo, Vayantis®
AM,I2	AmaizeUS-F IM 250
AVC,C2,Vi,Va	Avicta® Complete 250, Vibrance®, Vayantis®
CM,C2	CruiserMaxx® 250
CM,C2,Sb	CruiserMaxx® 250, SabrEx Innoculant
CM,C2,St,SU	CruiserMaxx® 250, Stamina, StepUp
CM,C2,Vi	CruiserMaxx® 250 with Vibrance
HC	Hefty Complete
Lum	LumiGEN™ (Corteva Agriscience)
Lum, L1	(2022) LumiGEN, Lumisure 1250
MQ,In	Maxim Quattro, Intego Vigor
Treated	Treated seed, unspecified
VI5	Vibrance® Cinco

* Seed treatments may include unspecified plant health promoting components.