

Test by: Northland F.I.R.S.T., LLC Moorhead, MN

2021 Corn Grain Top 30 Harvest Report

Red River Central North Dakota & Minnesota [RRCE] HOPE,
ND

Satrom Hiam Seed, Thomas Hiam, Steele County, ND

Early-Season Test 80 - 85 Day CRM
B2021RRCE02a

Top 30 of 32 For Gross Income
(Sorted by Yield)
Average of (3) Replications

PREV. CROP/HERB: Wheat / Axial Bold, Topaz, Weld

SOIL DESCRIPTION: Hamerly-Wyard loam,
moderately drained, non-
irrigated

SOIL CONDITION: Conventional W/ Fall Till, high P,
high K, 5.8 pH, 3.5% OM, 18.3
CEC

PEST MANAGEMENT: Roundup, Atrazine, Armezon
Pro, Class Act

FERTILITY - Applied N: 225 Spring

Applied N-P-K (units): 225-78-60

SEEDED - RATE - ROW: May 1 34.5 /A 30" spacing

HARVESTED - STAND: Oct 23 32.1 /A

TEST COMMENTS:

The plot was planted in cold, dry soil conditions on May 1st, and Tom had said that there was some replant going on in the area. The seed was just beginning to sprout on May 13th on one of our site visits. From planting all the way through July this site was exceptionally dry and hot, causing stress to most of the corn hybrids in the test. One replicate was removed from the early-season test damaged by drought, and the full-season results are not reported due to yield variability from drought stress.

Company/Brand	Product/Brand	Technol.†	RM	Yield Bu/A ↓	Moisture %	Lodging %	Stand (x 1000)	Gross Income \$/Acre	Rank	
REA	2B862 ↗	VT2P	86	207.7	18.1	0	30.9	1060	1	
Rob-See-Co	RC3240-GT ↗	GT	82	200.0	15.8	0	31.9	1032	2	
Rob-See-Co	RC3041-3110A ↗	3110A	80	194.6	17.5	0	32.4	996	3	
BioGene	BG510AT EZR ↗	3220A	81	193.5	18.2	0	31.9	987	4	
Thunder	T6983 VT2P ↗	VT2P	83	189.8	16.2	0	32.4	978	5	
Latham	LH 3325 VT2P RIB ↗	VT2P	83	188.8	16.7	0	32.9	970	6	
Hefty	H3042 RIB ↗	VT2P	80	186.7	16.8	0	32.9	959	7	
Hefty	H3322 RIB ↗	VT2P	83	186.6	16.9	0	31.9	958	8	
Golden Harvest	G85Z56-3220 EZR ↗	3220	85	185.8	18.3	0	31.9	947	11	
BioGene	BG512V2 RIB ↗	VT2P	81	184.8	15.9	0	32.9	953	10	
Integra	3431 VT2PRIB ↗	VT2P	84	182.4	17.3	0	32.4	934	12	
Golden Harvest	G84J92-3120A EZR ↗	3120A	84	179.1	17.3	0	34.4	917	13	
Proseed	1882 VT2PRIB ↗	VT2P	82	178.5	19.5	0	30.4	905	15	
Renk	RK256-3120-EZ ↗	3120	84	177.2	15.4	0	31.9	916	14	
Thunder	T6782 VT2P ↗	VT2P	82	176.4	18.3	0	32.4	899	18	
REA	2B863 ↗	VT2P	86	175.7	16.5	0	34.4	903	16	
Latham	LH 2977 VT2P RIB ↗	VT2P	79	174.0	15.1	0	32.4	901	17	
Hefty	H3442 RIB ↗	VT2P	84	173.9	16.1	0	32.4	896	19	
Golden Harvest	G80Q01-3220A EZR ↗	3220A	80	172.9	16.0	0	31.4	891	20	
Rob-See-Co	RC3418-3220A ↗	3220A	84	171.3	17.2	0	31.4	878	21	
REA	2B851 ↗	VT2P	85	168.9	15.0	0	30.9	875	22	
Thunder	T6185 VT2P ↗	VT2P	85	168.7	14.9	0	32.4	874	23	
Dyna-Gro	D23VC83 ↗	VT2P	83	167.3	16.2	0	31.4	862	24	
Thunder	T6181 VT2P ↗	VT2P	81	164.1	15.7	0	31.4	847	25	
Integra	3009 VT2PRIB ↗	VT2P	80	162.4	15.9	0	31.9	838	26	
Hefty	H3542 RIB ↗	VT2P	85	161.3	16.5	0	31.9	829	27	
Latham	LH 3397 VT2P RIB ↗	VT2P	83	159.0	15.4	0	32.4	822	28	
Renk	RK227VT2P ↗	VT2P	82	154.3	16.9	0	31.9	792	30	
Thunder	T6085 VT2P ↗	VT2P	85	153.6	15.1	0	30.4	795	29	
Hefty	H2842 RIB ↗	VT2P	80	152.6	15.5	0	32.4	788	31	
DeKalb	DKC36-86RIB CK	VT2P	86	186.2	16.9	0	32.9	956	9	
				Averages =	176.0	16.6	0	32.1	904	
				LSD (0.10) =	20.9	1.2	ns			
				LSD (0.25) =	11.0	0.6	ns			
				C.V. =	11.2					
Luke Brendemuhl				Historic yield: 185.67 bu/a, 2 yr(s)						
luke.brendemuhl@firstseedtests.com, (218) 790-4497										

Yield & Income Factors: Base Moisture = 15.0% Shrink = 1.3 Drying = \$0.025 Prices: GMO = \$5.18

Report Date: 10/24/2021

† See last page for abbreviation descriptions. Dark colored row identifies the check product found in early- and full-season tests. **Bold** yields are significantly above test average by LSD(0.10). **Italicized** brands exceed the grain moisture limit for this test. **ns** = column values not significantly different. ↗ New! Links to full product yield results at www.firstseedtests.com

©2021, All rights reserved by Elite Field Genetics, LLC

Additional reports available at www.firstseedtests.com

Test by: Northland F.I.R.S.T., LLC Moorhead, MN

2021 Corn Grain Top 30 Harvest Report

Red River Central North Dakota & Minnesota [RRCE] HOPE, ND

Satrom Hiam Seed, Thomas Hiam, Steele County, ND

Full-Season Test	86 - 90 Day CRM B2021RRCE02b
Top 30 of 32	For Gross Income (Sorted by Yield) Average of (3) Replications
PREV. CROP/HERB:	Wheat / Axial Bold, Topaz, Weld
SOIL DESCRIPTION:	Hamerly-Wyard loam, moderately drained, non- irrigated
SOIL CONDITION:	Conventional W/ Fall Till, high P, high K, 5.8 pH, 3.5% OM, 18.3 CEC
PEST MANAGEMENT:	Roundup, Atrazine, Armezon Pro, Class Act
FERTILITY - Applied N:	225 Spring
Applied N-P-K (units):	225-78-60
SEEDED - RATE - ROW:	May 1 34.5 /A 30" spacing
HARVESTED - STAND:	Oct 23 31.8 /A

TEST COMMENTS:

The plot was planted in cold, dry soil conditions on May 1st, and Tom had said that there was some replant going on in the area. The seed was just beginning to sprout on May 13th on one of our site visits. From planting all the way through July this site was exceptionally dry and hot, causing stress to most of the corn hybrids in the test. One replicate was removed from the early-season test damaged by drought, and the full-season results are not reported due to yield variability from drought stress.

Company/Brand	Product/Brand	Seeds / Row	RR	Yield Bu/a	Moisture %	lodging %	Stand in 2021	Gross Income \$/acre	Rank
Valley	LV 300 VTOP HB +	VTOP	86	188.8	17.8	0	31.4	888	1
Valley	HOPE HB +	VTOP	87	181.3	18.1	0	32.4	871	4
Trinity	TRINITY VTOP +	VTOP	86	181.2	17.8	0	30.9	877	5
Valley	LV 300 VTOP HB +	VTOP	86	180.4	17.8	0	30.9	866	6
Valley	HOPE +	3014	86	180.3	18.2	1	31.1	861	8
Trinity	TRINITY VTOP HB +	374	86	177.9	20.3	0	31.4	850	9
Trinity	TRINITY VTOP HB +	VTOP	86	177.7	17.7	0	31.1	847	7
Valley	HOPE HB +	VTOP	86	177.3	20.0	0	31.1	846	8
Valley	HOPE +	VTOP	86	172.8	18.1	0	30.9	839	10
Valley	LV 300 VTOP HB +	VTOP	86	170.9	18.2	0	31.4	834	11
Valley	HOPE VTOP HB +	VTOP	86	170.8	18.1	0	31.4	834	12
Trinity	TRINITY VTOP +	VTOP	87	168.7	18.1	0	30.9	827	12
Valley	HOPE +	VTOP	86	167.1	18.8	0	30.9	819	14
Golden Harvest	GH 3000 HB +	3000	86	167.0	20.4	0	30.4	798	16
Valley	HOPE VTOP +	VTOP	86	167.8	20.1	0	30.4	798	17
Valley	HOPE HB +	VTOP	86	167.7	18.1	0	30.4	819	18
Valley	LV 300 VTOP HB +	VTOP	86	168.2	20.0	0	31.4	798	18
Trinity	TRINITY VTOP +	VTOP	86	162.8	20.0	0	31.8	798	18
Trinity	TRINITY VTOP +	VTOP	86	168.8	18.8	0	30.7	748	20
Valley	HOPE +	VTOP	86	165.7	18.4	0	30.9	739	21
Golden Harvest	GH 3000 HB +	3000	86	163.2	20.8	0	31.4	731	22
Valley	HOPE +	VTOP	86	163.8	20.3	0	30.9	730	23
Valley	LV 300 VTOP HB +	VTOP	86	162.8	20.4	0	31.4	738	27
Trinity	TRINITY +	VTOP	87	162.1	18.7	0	31.4	718	24
Valley	HOPE VTOP +	VTOP	86	160.8	20.1	0	30.9	712	25
Golden Harvest	GH 3000 HB +	3000	86	160.3	18.1	0	31.4	712	26
Trinity	TRINITY VTOP HB +	VTOP	87	157.8	18.8	0	31.4	649	28
Golden Harvest	GH 3000 HB +	3000	86	158.3	18.8	0	30.4	642	29
Golden Harvest	GH 3000 3014 +	3014	86	158.5	20.4	0	30.9	633	30
Golden Harvest	GH 3000 VTOP HB +	VTOP	87	156.1	18.8	0	31.4	633	31

REJECTED

Averages =	158.4	20.0	0	31.8	801
LSD (0.10) =	ns	ns	ns		
LSD (0.25) =	ns	ns	ns		
C.V. =	29.4				Historic yield: 185.67 bu/a, 2 yr(s)

Luke Brendemuhl

luke.brendemuhl@firstseedtests.com, (218) 790-4497

Yield & Income Factors: Base Moisture = 15.0% Shrink = 1.3 Drying = \$0.025 Prices: GMO = \$5.18

Report Date: 10/24/2021

Additional reports available at www.firstseedtests.com

† See last page for abbreviation descriptions. Dark colored row identifies the check product found in early- and full-season tests. **Bold** yields are significantly above test average by LSD(0.10). **Italicized** brands exceed the grain moisture limit for this test. **ns** = column values not significantly different. ↗ New! Links to full product yield results at www.firstseedtests.com

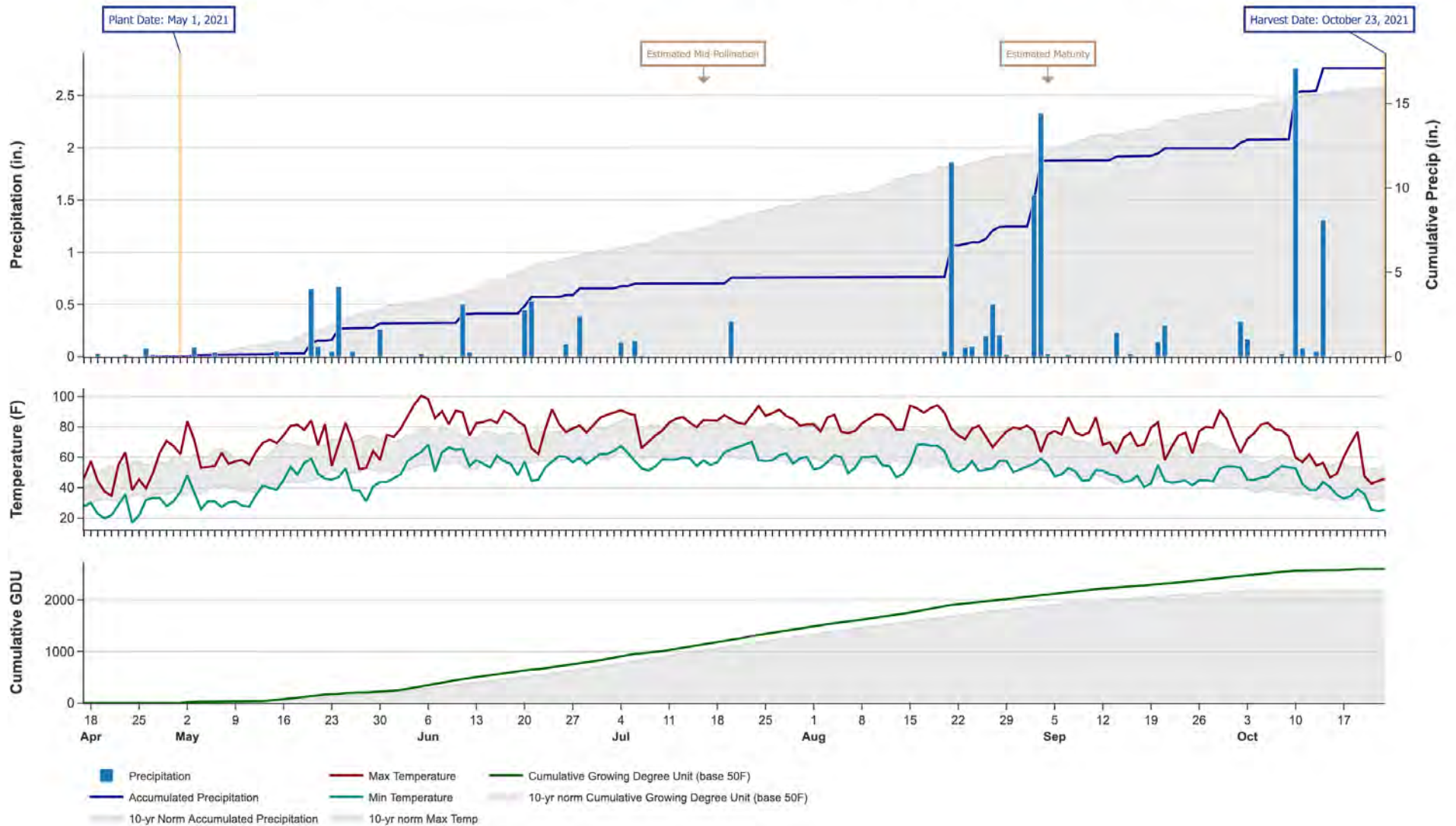
©2021, All rights reserved by Elite Field Genetics, LLC

2021 Corn - Red River Central North Dakota & Minnesota [RRCE]

Weather Conditions Summary at HOPE, ND

Weather Data Retrieved: 10/24/2021

Monthly Total	Apr*	May	Jun	Jul	Aug	Sep	Oct*	Total
Precip (in) Normal (Diff)	0.1 1.0 (-0.9)	2.0 3.1 (-1.1)	2.1 3.2 (-1.1)	0.6 2.9 (-2.3)	3.0 2.9 (+0.1)	4.6 2.6 (+2.0)	4.7 1.4 (+3.4)	17.2 17.1 (+0.2)
GDU Normal (Diff)	0 0 (0)	228 205 (+22)	581 484 (+96)	667 629 (+37)	573 529 (+43)	392 309 (+82)	160 19 (+140)	2601 2177 (+423)



* First monthly total starts on the date 14 days prior to planting and final monthly total ends on the harvest date.

Note: Weather information from PRISM Climate Group. Data may be revised by the provider after retrieval. FIRST will not revise or update reports to reflect any weather data changes. For information purposes only.

2021 Corn - Red River Central North Dakota & Minnesota [RRCE]

Early-Season Test Products (32 Total)

Company/Brand	Product/Brand	Technology	RIB	RM	Seed Treat.
BioGene	BG510AT EZR	3220A	Y	81	CM,C2,Vi
BioGene	BG512V2 RIB	VT2P	Y	81	AC250
BioGene	BG520V2 RIB	VT2P	Y	82	AC250
DeKalb	DKC36-86RIB CK	VT2P	Y	86	AC,P5V,EDC-EL
Dyna-Gro	D23VC83	VT2P	N	83	AC,P5V
Golden Harvest	G80Q01-3220A EZR	3220A	Y	80	AVC,C5,Vi
Golden Harvest	G84J92-3120A EZR	3120A	Y	84	AVC,C2,Vi
Golden Harvest	G85Z56-3220 EZR	3220	Y	85	AVC,C2,Vi
Hefty	H2842 RIB	VT2P	Y	80	HC
Hefty	H3042 RIB	VT2P	Y	80	HC
Hefty	H3322 RIB	VT2P	Y	83	HC
Hefty	H3442 RIB	VT2P	Y	84	HC
Hefty	H3542 RIB	VT2P	Y	85	HC
Integra	3009 VT2PRIB	VT2P	Y	80	AC,P5V,SU
Integra	3431 VT2PRIB	VT2P	Y	84	AC,P5V,SU
Latham	LH 2977 VT2P RIB	VT2P	Y	79	AC,P2
Latham	LH 3325 VT2P RIB	VT2P	Y	83	AC,P2
Latham	LH 3397 VT2P RIB	VT2P	Y	83	AC,P2
Proseed	1882 VT2PRIB	VT2P	Y	82	AVC,C2,Vi
REA	2B851	VT2P	Y	85	AC,P5,B360
REA	2B862	VT2P	Y	86	AC,P5,B360
REA	2B863	VT2P	Y	86	AC,P5,B360
Renk	RK227VT2P	VT2P	N	82	AC,P2
Renk	RK256-3120-EZ	3120	Y	84	CM,C2
Rob-See-Co	RC3041-3110A	3110A	N	80	CM,C2,Vi
Rob-See-Co	RC3240-GT	GT	N	82	CM,C2,Vi
Rob-See-Co	RC3418-3220A	3220A	Y	84	CM,C2,Vi
Thunder	T6085 VT2P	VT2P	Y	85	AC,P2
Thunder	T6181 VT2P	VT2P	Y	81	AC,P2
Thunder	T6185 VT2P	VT2P	Y	85	AC,P2
Thunder	T6782 VT2P	VT2P	Y	82	AC,P2
Thunder	T6983 VT2P	VT2P	Y	83	AC,P2

* FIRST does not inspect products for refuge blend. N* indicates the product was entered without a refuge component by the sponsoring seed company. Prior year entries may contain refuge blend.

2021 Corn - Red River Central North Dakota & Minnesota [RRCE]

Full-Season Test Products (32 Total)

Company/Brand	Product/Brand	Technology	RIB	RM	Seed Treat.
AgriGold	A617-78VT2RIB GC	VT2P	Y	87	AC,P5V
Channel	187-20VT2PRIB GC	VT2P	Y	87	AC,P5,B360
Channel	189-64STXRIB GC	STX	Y	89	AC,P5V,B-360
Dairyland	DS-2828AM	AM	Y	88	Lum
Dairyland	DS-3022AM	AM	Y	90	Lum,P1V
DeKalb	DKC36-86RIB CK	VT2P	Y	86	AC,P5V,EDC-EL
Dyna-Gro	D27VC87	VT2P	N	87	AC,P5V
Golden Harvest	G90S99-5222 EZR	5222	Y	90	AVC,C2,Vi
Golden Harvest	G90Y04-5222A EZR	5222A	Y	90	AVC,C2,Vi
Hefty	H3632 RIB	VT2P	Y	86	HC
Hefty	H3712 RIB	VT2P	Y	87	HC
Hefty	H3922 RIB	VT2P	Y	89	HC
Hefty	H4032 RIB	VT2P	Y	90	HC
Hefty	H4052	VT2P	N	90	HC
Innotech	IC3983-3220	3220	Y	89	AVC,C2,Vi
Integra	3629 VT2PRIB	VT2P	Y	86	AC,P5V
Integra	4041 VT2PRIB	VT2P	Y	90	AC,P5,SU
Latham	LH 3695 VT2P RIB	VT2P	Y	86	AC,P2
Latham	LH 3827 VT2P RIB	VT2P	Y	88	AC,P2
Latham	LH 3937 VT2P RIB	VT2P	Y	89	AC,P2
Proseed	1787 VT2PRIB	VT2P	Y	87	AVC,C2,Vi
REA	3B903	VT2P	Y	90	AC,P5,B360
REA	3B912	VT2P	Y	91	AC,P5,B360
Renk	RK297VT2P	VT2P	N	89	AC,P5V
Renk	RK312VT2PRIB	VT2P	Y	90	AC,P2
Renk	RK315VT2P	VT2P	N	90	AC,P2
Rob-See-Co	RC3601-3011A	3011A	N	86	CM,C2,Vi
Stine	9202-G	3011A	N	86	Treated
Thunder	T6190 VT2P	VT2P	Y	90	AC,P2
Thunder	T6888 VT2P	VT2P	Y	88	AC,P2
Thunder	T6987 VT2P	VT2P	Y	87	AC,P2
Thunder	T7188 VT2P	VT2P	Y	88	AC,P2

* FIRST does not inspect products for refuge blend. N* indicates the product was entered without a refuge component by the sponsoring seed company. Prior year entries may contain refuge blend.

Footnotes and Abbreviations Descriptions

Brand Footnotes

[^] Innotech™ brand seed is distributed by Rob-See-Co, LLC. Power Plus® brand seed is distributed by Burrus. Innotech™ is a trademark of Syngenta. Power Plus® is a registered trademark of Corteva Agriscience.

CK Identifies a check product included in early- and full-season tests.

GC Grower Comparison product included by FIRST when space permits.

Corn Technologies

3011A Agrisure® Artesian® 3011A (CB,RW,LL,GT)
3110A Agrisure® Artesian® Viptera® 3110 (Vip, CB,LL,GT)
3120 Agrisure® 3120 (CB,HX,LL,GT)
3120A Agrisure® Artesian® 3120 (CB,HX,LL,GT)
3220 Agrisure® Viptera® 3220 (Vip,CB,HX,LL,GT)
3220A Agrisure® Artesian® Viptera® 3220 (Vip,CB,HX,LL,GT)
5222 Agrisure® Duracade™ 5222
5222A Agrisure® Duracade™ Artesian® 5222
AM Optimum® AcreMax®
GT Agrisure® GT
STX SmartStax®
VT2P Genuity® VT Double PRO®

NOTE: The refuge component genetics may vary in a refuge blend seed product.

Corn Seed Treatments*

NA	Not Available
AC,P2	Acceleron® 250
AC,P5,B360	Acceleron® 500 with BioRise™ B-360 ST
AC,P5,SU	Acceleron® 500, StepUp
AC,P5V	Acceleron® Poncho 500/Votivo
AC,P5V,B-360	Acceleron® Poncho 500/Votivo with B-360 SAT
AC,P5V,EDC-EL	Acceleron® ELITE Poncho 500/Votivo with Enhanced Disease Control
AC,P5V,SU	Acceleron® Poncho 500/Votivo, StepUp
AC250	Acceleron® 250
AVC,C2,Vi	Avicta® Complete 250, Vibrance®
AVC,C5,Vi	Avicta® Complete 500, Vibrance
CM,C2	CruiserMaxx® 250
CM,C2,Vi	CruiserMaxx® 250 with Vibrance
HC	Hefty Complete
Lum	LumiGEN™ (Corteva Agriscience)
Lum,P1V	LumiGEN™ Poncho 1250/Votivo
Treated	Treated seed, unspecified

* Seed treatments may include unspecified plant health promoting components.