

## 2013 Corn Silage Harvest Report for Wisconsin South Central [ WISC ]

Mike Weihert, Jefferson County, WI 53094 [ WATERTOWN ]



Test by: Prairie Ag Services, Inc., Malta, IL

PREV. CROP/HERB: Soybean / Roundup  
 SOIL INFORMATION: Lender loam, minimum w/o fall till, mod. high P, mod. high K, non-irrigated  
 UNITS N-P-K Applied: 104-0-0, N Applied: 69 Spring, 35 Side  
 PEST MANAGEMENT: Force, SureStart, Parallel  
 SEEDED - RATE: May 9 32-38,000 /A  
 HARVESTED - STAND: Sep 11 35,900 /A

**103 - 110 Day CRM**  
 L2013WISC06

### All 30 Products Tested, 3 Rep. Yield Average

Company/Brand	Product/Brand†	Technology <sup>‡</sup>	CRM	Type†	Yield at		Dry Matter (%)	Crude Protein (% DM)	Starch (% DM)	NEL (Mcal/lb)	NDF (% DM)	NDFd 30 Hour (% NDF)	Milk/Ton DM††		Milk/Acre (Lbs)
					(Tons/A)	Stand (x1,000)							(Lbs)	Rank	
NuTech/G2 Gen	5H-806	HX,RR2	106	D	34.4	32.5	40.6	6.9	41.3	69.4	32.4	49.9	3,215	10	33,179
Cornelius	C619XTLL	HXT	110	D	30.5	35.5	34.7	6.8	37.0	74.5	35.2	54.2	3,570	1	32,666
AgriGold	A6473STXRIB	STX,B	110	D	<b>35.6</b>	37.8	39.7	6.8	33.2	66.5	40.9	51.0	3,036	17	32,424
Great Lakes	5939VT3PRIB	VT3P,B	109	D	32.0	37.2	33.9	6.9	34.2	71.4	39.6	51.1	3,353	5	32,189
NuTech	3A-306	GT	106	D	31.7	35.5	36.3	7.1	35.6	71.9	36.0	48.6	3,364	3	31,992
Dairyland	HiDF3510SSX	STX	110	S	31.3	31.9	30.5	6.8	31.5	71.9	39.5	48.6	3,363	4	31,579
Renk	RK809GTCBLLRW	3000GT	110	D	31.6	35.8	37.0	7.0	34.4	70.2	39.2	51.3	3,273	8	31,028
FS InVISION	FS 55ZV4 RIB	VT3P,B	105	D	<b>35.3</b>	37.8	45.2	7.3	38.9	64.3	36.9	52.5	2,900	23	30,711
Great Lakes	5368VT3PRIB	VT3P,B	103	D	33.3	36.8	39.2	7.0	37.3	67.1	39.2	49.7	3,061	15	30,579
FS InVISION	FS 57QX1 RIB	STX,B	107	D	32.2	37.8	42.7	7.7	41.0	67.5	33.0	52.4	3,106	13	30,004
LG Seeds	LG2549VT3PRIB	VT3P,B	109	D	30.1	33.2	32.1	7.4	31.7	71.1	41.9	49.9	3,322	7	29,998
FS InVISION	FS 54VX1 RIB	STX,B	104	D	32.3	37.5	39.1	6.4	40.0	67.8	35.6	46.4	3,087	14	29,913
Jung	HDS76V78	VT3	107	L	31.6	34.2	35.9	7.2	34.5	68.7	38.8	45.7	3,140	12	29,767
NuTech	5N-406	3000GT	106	D	31.0	32.5	36.6	6.6	34.8	69.3	36.9	48.7	3,195	11	29,714
Great Lakes	5884VT3PRIB	VT3P,B	108	D	30.2	37.5	36.1	7.8	32.4	70.0	40.4	52.6	3,273	9	29,653
AgriGold	A6458VT3PRIB	VT3P,B	110	D	28.9	37.5	31.6	7.0	34.7	72.8	39.5	47.9	3,415	2	29,608
Renk	RK743VT3P	VT3P	109	N	33.1	35.8	42.3	7.0	34.7	65.1	41.2	52.5	2,955	20	29,343
Cornelius	C547VT3	VT3	107	D	29.0	34.2	35.5	6.6	33.5	71.1	40.2	51.7	3,332	6	28,988
FS InVISION	FS 60ZV4	VT3P	110	D	34.3	36.5	42.3	7.6	38.0	62.6	37.1	41.5	2,709	27	27,876
Dairyland	HiDF3702-9	3000GT	102	S	31.3	35.8	40.0	6.1	36.1	65.9	39.3	46.8	2,968	19	27,870
Great Lakes	5525VT3PRO	VT3P	105	D	34.2	37.8	43.3	7.2	33.0	61.7	42.7	48.6	2,708	28	27,784
AgriGold	A6422VT3Pro	VT3P	108	D	34.8	37.8	41.2	6.1	31.6	61.1	44.0	42.4	2,621	29	27,363
FS InVISION	FS 53TV4 RIB	VT3P,B	103	D	32.8	36.5	42.1	6.9	34.1	63.0	41.6	46.9	2,780	24	27,355
Great Lakes	5785VT3PRIB	VT3P,B	107	D	30.8	37.2	36.1	7.0	30.8	65.8	42.1	44.8	2,947	21	27,230

Results Table continued next page

**2013 Corn Silage Harvest Report for Wisconsin South Central [ WISC ]**

Mike Weihert, Jefferson County, WI 53094 [ WATERTOWN ]



**All 30 Products Tested, 3 Rep. Yield Average (continued)**

Company/Brand	Product/Brand†	Technology†	CRM Type†	Yield at		Dry Matter (%)	Crude Protein (% DM)	Starch (% DM)	NEL (Mcal/lb)	NDF (% DM)	NDFd 30 Hour (% NDF)	Milk/Ton DM††		Milk/Acre (Lbs)	
				(Tons/A)	(x1,000)							(Lbs)	Rank		
Dairyland	HiDF3108RA	STX,B	108 S	28.6	34.8	28.9	6.0	25.5	67.0	44.2	47.2	3,039	16	26,075	
Jung	HDS76V50	VT3P	105 L	32.4	32.2	41.5	6.8	28.4	60.5	46.8	46.8	2,615	30	25,418	
NuTech	0A-205	None	105 D	31.1	35.2	40.0	6.5	36.2	62.9	39.7	39.9	2,719	26	25,368	
AgriGold	A6358VT3Pro	VT3P	105 D	30.1	37.2	43.6	6.4	37.2	62.8	38.6	47.7	2,771	25	25,022	
AgriGold	A6408VT3PRIB	VT3P,B	107 D	27.1	35.8	33.5	7.2	26.3	66.0	45.6	48.1	2,978	18	24,211	
FS InVISION	FS 59SX1 RIB	STX,B	109 D	26.8	37.8	31.3	6.5	25.9	65.3	46.3	45.1	2,915	22	23,437	
				Test Average =	<b>31.6</b>	<b>35.9</b>	<b>37.7</b>	<b>6.9</b>	<b>34</b>	<b>67.2</b>	<b>39.8</b>	<b>48.3</b>	<b>3,058</b>		<b>28,945</b>
				LSD(0.10) =	3.6										
				C.V. =	8.3										

prairie.ag.inc@gmail.com, (815) 739-2688

† See last page for Product/Brand, Technology and Type information. †† Milk/ton: calculated from NIRS data using Milk2006. **Bold** values significantly above test average. **ns** = not significant

**TEST COMMENTS:** *This was an excellent test location. Hybrids were taller than the chopper wagons with some products 16 ft in height. Root development was excellent along with ear development. Ears were filled to the tip and the kernels were deep. This field also dried faster than anticipated during the hot conditions just prior to harvest. Plant health was excellent and a few timely rains in July pushed this field to the limits.*

Visit us at [www.firstseedtests.com](http://www.firstseedtests.com)

Report Date: 9/20/2013

Revised:

AgSCI Copyright 2013

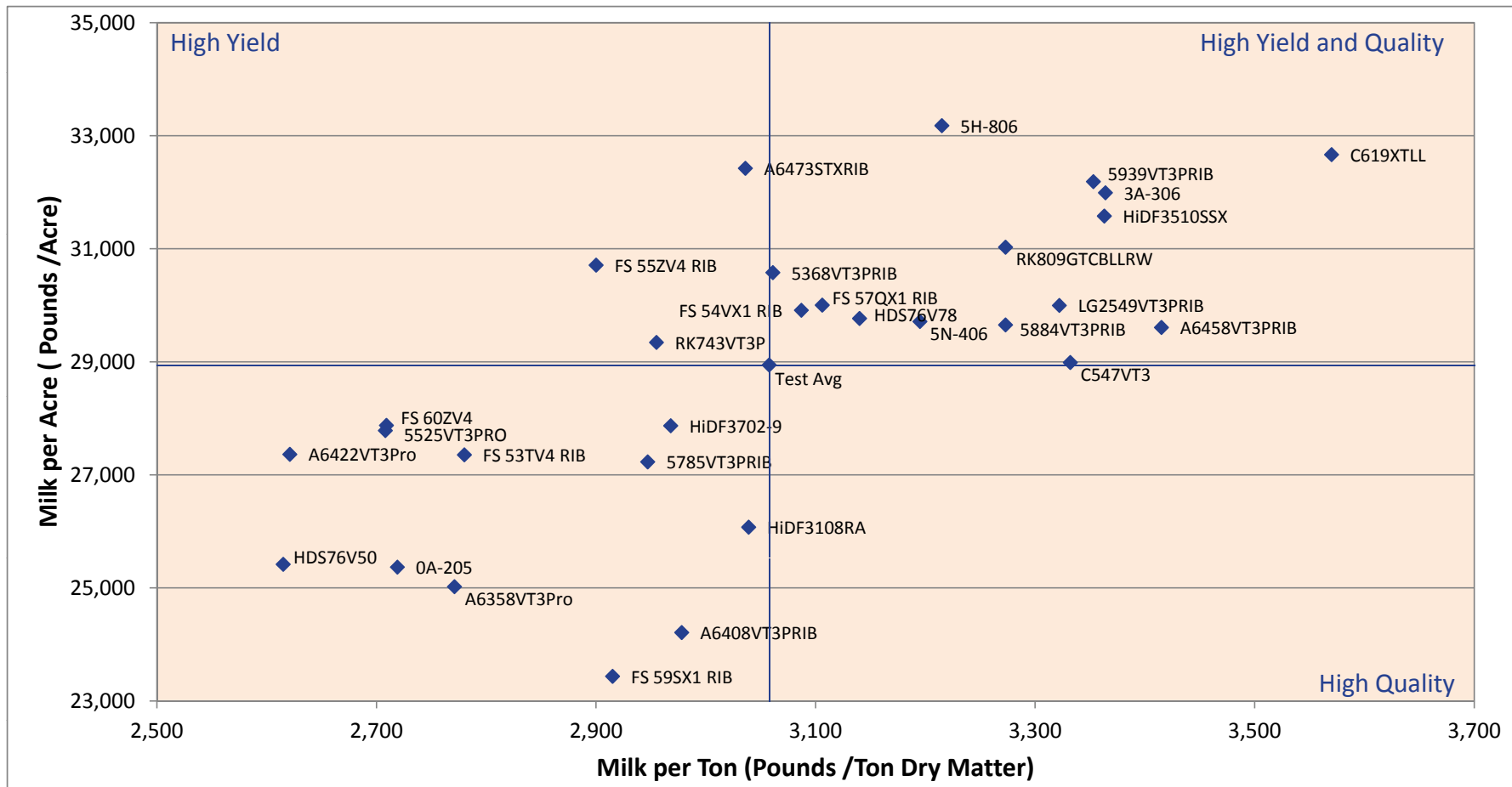
**2013 Corn Silage Harvest Report for Wisconsin South Central [ WISC ]**

Mike Weihert, Jefferson County, WI 53094 [ WATERTOWN ]



PREV. CROP/HERB: Soybean / Roundup  
 SOIL INFORMATION: Lender loam, minimum w/o fall till, mod. high P, mod. high K, non-irrigated  
 UNITS N-P-K Applied: 104-0-0, N Applied: 69 Spring, 35 Side  
 PEST MANAGEMENT: Force, SureStart, Parallel  
 SEEDED - RATE: May 9 32-38,000 /A  
 HARVESTED - STAND: Sep 11 35,900 /A

**103 - 110 Day CRM**  
 L2013WISC06

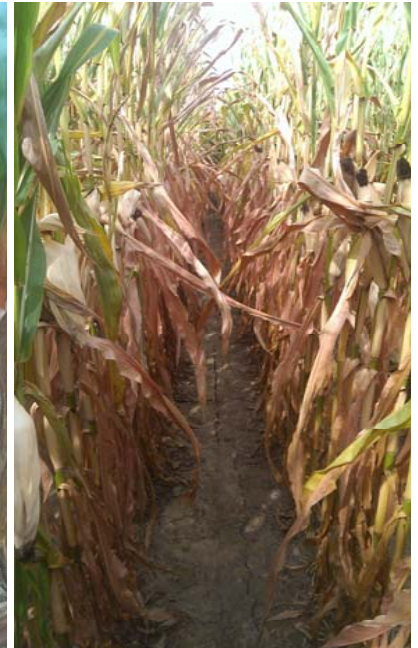


Report Date: 9/20/2013

Revised:

2013 Corn Silage Images for Wisconsin South Central [ WISC ]

Mike Weihert, Jefferson County, WI 53094 [ WATERTOWN ]



**COMMENTS:** *The ear fill at this site was excellent. This field was completely green in mid-September. Then two days of 100+ heat index quickly dried some products to what you see here.*

## Footnotes and Abbreviation Descriptions

### Brand Footnotes

^	G2® brand seed is distributed by NuTech Seed, LLC. HPT® brand seed is distributed by Hoegemeyer Hybrids, Inc. RPM® brand seed is distributed by Doebler's PA Hybrids, Inc. Supreme EX® brand seed is distributed by Seed Consultants, Inc. VPMMaxx® brand seed is distributed by AgVenture, Inc. XL® and Phoenix® brand seed is distributed by Beck's Superior Hybrids. Curry®, G2®, HPT®, RPM®, Supreme EX®, VPMMaxx® and XL® are registered trademarks of DuPont Pioneer.
GC	Grower Comparison product included by F.I.R.S.T. when space permits.

### Corn Technologies\*

3000GT	Agrisure® 3000GT (CB,RW,LL,GT)	HX	Herculex® 1, contains LL
3011A	Agrisure® Artesian® (CB,RW,LL,GT)	HX,RR2	Herculex® 1, Roundup Ready 2 Corn
3110	Agrisure® Viptera® 3110 (Vip, CB,LL,GT)	HXRW	Herculex® rootworm, contains LL
3111	Agrisure® Viptera® 3111 (Vip,CB,RW,LL,GT)	HXT	Herculex® Xtra (HX,HXRW,LL)
3122	Agrisure® 3122 (CB,HXX,RW,LL,GT)	HXT,RR2	Herculex® Xtra, Roundup Ready 2 Corn
3220	Agrisure® Viptera® 3220 (Vip,CB,HX,LL,GT)	LL	LibertyLink®
AM	Optimum® AcreMax® (YGCB,HX,LL,RR2)	None	conventional corn
AM-R	Optimum® AcreMax® (YGCB,HX,RR2)	OI	Optimum® Intrasect® (YGCB,HX,LL,RR2)
AM1	Optimum® AcreMax®1 (HXT,LL,RR2)	OIX	Optimum® Intrasect® Xtra (YGCB,HXT,LL,RR2)
AMRW	Optimum® AcreMax® Rootworm (HXRW,LL,RR2)	OIXT	Optimum® Intrasect® Xtreme (YGCB,HXT,RW,LL,RR2)
AMRW-R	Optimum® AcreMax® Rootworm (HXRW,RR2)	OT	Optimum® TRIssect® (HX,RW,LL,RR2)
AMX	Optimum® AcreMax® Xtra (YGCB,HXT,LL,RR2)	RR2	Roundup Ready® 2 Corn
AMX-R	Optimum® AcreMax® Xtra (YGCB,HXT,RR2)	STX	SmartStax® (VT3P,HXX)
AMXT	Optimum® AcreMax® Xtreme (YGCB,HXT,LL,RR2)	VT2P	Genuity® VT Double Pro®
B	Blended seed (i.e. refuge blend)	VT3	YieldGard VT Triple®
CB/LL	Agrisure® CB/LL	VT3P	Genuity® VT Triple Pro®
CB/LL/RW	Agrisure® CB/LL/RW	YGCB	YieldGard® Corn Borer
GT	Agrisure® GT		
GT/CB/LL	Agrisure® GT/CB/LL		

\* The refuge component genetics may vary in a refuge blend seed product.

### Silage Hybrid Type

B	Brown Midrib
D	Dual Purpose
L	Leafy
N	NutriDense
O	Other
S	Silage only