

Test by: M&D Seed Research, LLC Van Buren, IN

2023 Corn Grain Top 30 Harvest Report

Ohio Northwest [OHNW] DOLA, OH
Jerry McBride, Hardin County, OH 45162

Early-Season Test	103 - 108 Day CRM B2023OHNW03a
Top 30 of 40	For Gross Income (Sorted by Yield) Average of (4) Replications
PREV. CROP/HERB:	Soybeans / Glyphose, Enlist
SOIL DESCRIPTION:	Blount silt loam, moderately drained, non-irrigated
SOIL CONDITION:	No-Till, low P, medium K, 5.9 pH, 3.6% OM, 23.1 CEC
PEST MANAGEMENT:	Resicore, Atrazine, Glyphosate
FERTILITY - Applied N:	33 Spring, 150 Sidedress
Applied N-P-K (units):	183-0-0
SEEDED - RATE - ROW:	May 16 33.6 /A 30" spacing
HARVESTED - STAND:	Oct 26 33.2 /A

TEST COMMENTS:

This is a no-till site that was planted in good conditions during the middle of May. This location has high fertility with good drainage and has a history of uniform data. The site received below-average rains and heat units during most of the growing season but still finished with good yields. Corn was high in moisture for late October, but did shell well during harvest.

Company/Brand	Product/Brand	Technol.†	RM	Yield Bu/A ↓	Moisture %	Lodging %	Stand (x 1000)	Gross Income \$/Acre	Rank
Integra	5802 VT2PRIB ↗	VT2P	108	242.1	23.7	1	33.5	1010	3
FS InVision	FS 5335P RIB ↗	STXP	103	238.6	23.9	1	33.5	994	6
M & W Seeds	MW C104 PWR GC ↗	PC	104	238.4	21.7	1	33.5	1014	1
FS InVision	FS 5725X RIB ↗	STX	107	238.4	23.1	1	32.8	1000	4
Wyckoff	2584 VT2P RIB ↗	VT2P	108	236.8	25.7	1	33.5	969	10
Rob-See-Co	RC5422-PCE ↗	PCE	104	236.1	20.6	13	33.2	1014	2
Ebberts	9779SSX RIB ↗	STX	108	234.5	25.0	1	33.5	966	11
Dyna-Gro	D48VC84 ↗	VT2P	108	234.3	25.7	1	33.2	959	13
FS InVision	FS 5525VDG RIB ↗	VT2PDG	105	234.1	21.6	1	33.5	997	5
FS InVision	FS 5594X RIB ↗	STX	105	234.0	22.1	1	33.2	991	7
Augusta	A1954 PCE ↗	PCE	104	231.5	21.2	1	33.5	989	8
Seed Consultants	SC1042Q ↗	QR	104	229.8	24.8	1	33.5	949	17
Integra	5584 PWE ↗	PCE	105	228.6	21.4	7	33.5	975	9
M & W Seeds	MW 44V83 GC ↗	V	107	228.1	25.2	1	31.7	938	19
Seed Consultants	SC1084AM ↗	AM	108	227.1	23.4	1	33.5	950	16
Renk	RK625DGV2P ↗	VT2PDG	104	225.3	21.9	1	32.8	956	15
Wyckoff	2515 VT2P RIB ↗	VT2P	107	225.2	21.7	5	33.5	957	14
Ebberts	7209TR RIB ↗	TRE	108	224.9	23.8	1	33.5	938	20
Seed Consultants	SC1054AM ↗	AM	105	223.8	20.6	1	32.8	962	12
Partners Brand	PB 7928-VT2PRIB ↗	VT2P	109	223.2	25.3	1	33.5	917	26
Augusta	A2057-3111 ↗	3111	107	222.9	25.2	1	32.8	917	27
Wyckoff	2432 TRE RIB ↗	TRE	105	221.9	22.4	1	32.8	937	21
Rob-See-Co	RC5694-VT2P ↗	VT2P	106	221.6	22.7	1	33.5	934	22
Dyna-Gro	D44DC73RIB ↗	VT2PDG	104	221.4	21.6	1	32.8	942	18
Pioneer	P0720AM GC ↗	AM	107	220.4	26.5	1	32.8	895	30
Buckeye Hybrids	RR8815 VT2P ↗	VT2P	108	218.9	25.6	2	33.5	896	29
Pioneer	P0035AM GC ↗	AM	100	218.8	21.9	1	33.2	929	23
Wyckoff	2632 SS RIB ↗	STX	108	218.1	25.1	1	32.8	898	28
Renk	RK707TRE ↗	TRE	105	217.3	21.2	1	33.2	929	24
Dyna-Gro	D47SS93 ↗	STX	107	215.7	21.4	1	32.8	920	25
PIONEER	P0859AM CK	AM	108	217.8	25.3	1	33.2	895	31



Matt Turner

mattturner1979@yahoo.com, (317) 606-9040

Averages = **222.2** **23.6** **2** **33.2** **929**

LSD (0.10) = 16.0 1.3 ns

LSD (0.25) = 8.4 0.7 ns

C.V. = 7.9

Historic yield: 197.04 bu/a, 6 yr(s)

Yield & Income Factors: Base Moisture = 15.5% Shrink = 1.3 Drying = \$0.04 Prices: GMO = \$4.50; non-GMO = \$5.00

Report Date: 10/27/2023

† See last page for abbreviation descriptions. Dark colored row identifies the check product found in early- and full-season tests. **Bold** yields are significantly above test average by LSD(0.10). **Italicized** brands exceed the grain moisture limit for this test. **ns** = column values not significantly different. ↗ Links to full product yield results at www.firstseedtests.com

©2023, All rights reserved to Farmers' Independent Research of Seed Technologies, LLC.

Additional reports available at www.firstseedtests.com

Test by: M&D Seed Research, LLC Van Buren, IN

2023 Corn Grain Top 30 Harvest Report

Ohio Northwest [OHNW] DOLA, OH
Jerry McBride, Hardin County, OH 45162

Full-Season Test	109 - 112 Day CRM B2023OHNW03b
Top 30 of 40	For Gross Income (Sorted by Yield) Average of (4) Replications
PREV. CROP/HERB:	Soybeans / Glyphose, Enlist
SOIL DESCRIPTION:	Blount silt loam, moderately drained, non-irrigated
SOIL CONDITION:	No-Till, low P, medium K, 5.9 pH, 3.6% OM, 23.1 CEC
PEST MANAGEMENT:	Resicore, Atrazine, Glyphosate
FERTILITY - Applied N:	33 Spring, 150 Sidedress
Applied N-P-K (units):	183-0-0
SEEDED - RATE - ROW:	May 16 33.6 /A 30" spacing
HARVESTED - STAND:	Oct 26 33.1 /A

TEST COMMENTS:

This is a no-till site that was planted in good conditions during the middle of May. This location has high fertility with good drainage and has a history of uniform data. The site received below-average rains and heat units during most of the growing season but still finished with good yields. Corn was high in moisture for late October, but did shell well during harvest.

Company/Brand	Product/Brand	Technol.†	RM	Yield Bu/A ↓	Moisture %	Lodging %	Stand (x 1000)	Gross Income \$/Acre	Rank
Integra	6274 VT2PRIB ↗	VT2P	112	247.5	26.4	1	33.2	1006	2
Dyna-Gro	D50VC09RIB ↗	VT2P	110	242.8	25.9	1	31.4	991	3
FS InVision	FS 6133VDG RIB ↗	VT2PDG	111	240.7	29.9	1	32.8	945	7
FS InVision	FS 6017V RIB ↗	VT2P	110	239.1	22.6	1	33.2	1008	1
Renk	RK773TRE ↗	TRE	109	236.3	26.9	1	33.5	955	4
Renk	RK766SSPRO ↗	STXP	109	235.5	26.6	1	32.8	955	5
FS InVision	FS 6025X RIB ↗	STX	110	234.5	29.2	1	33.5	927	11
Wyckoff	2678 VT2P RIB ↗	VT2P	111	233.9	29.6	1	33.5	921	12
Rob-See-Co	RC6232-DGVT2P ↗	VT2PDG	112	232.9	25.7	1	32.8	953	6
Augusta	A2061-PWE ↗	PCE	111	232.9	27.5	1	33.5	936	9
Wyckoff	2667 DGVT2P RIB ↗	VT2PDG	111	231.4	30.1	1	33.5	906	16
Rob-See-Co	RC5929-VT2P ↗	VT2P	109	230.2	26.9	1	33.5	931	10
Integra	6061 STXRIB ↗	STX	110	228.6	25.6	1	33.5	937	8
Augusta	A2262-3110 ↗	3110	112	227.8	30.0	1	33.2	893	21
Ebberts	6444VT2P RIB ↗	VT2P	114	227.3	28.6	1	32.8	904	17
Golden Harvest	G10L16-DV ↗	DV	110	226.6	27.3	1	32.1	913	15
Ebberts	6883DGVT2P RIB ↗	VT2PDG	112	226.4	26.6	1	33.5	919	13
Rob-See-Co	RC6131-TRE ↗	TRE	111	225.5	28.1	1	32.8	901	18
Ebberts	6220VT2P RIB ↗	VT2P	110	225.3	26.0	1	32.1	919	14
Wyckoff	2711 VT2P RIB ↗	VT2P	112	224.1	30.9	1	33.5	871	29
Golden Harvest	G12S75-D ↗	D	112	223.7	27.8	1	33.5	897	20
Wyckoff	2679 DGVT2P RIB ↗	VT2PDG	112	221.3	29.1	1	33.2	876	26
Seed Consultants	SC1093AM ↗	AM	109	220.3	25.7	1	32.8	901	19
Integra	6244 PWE ↗	PCE	112	219.7	27.9	1	33.5	879	24
NK Brand	NK1040-AA ↗	AA	110	219.4	26.4	1	32.5	892	22
Seed Consultants	SC1122Q ↗	QR	112	218.5	27.6	1	32.8	877	25
FS InVision	FS 6137PC ↗	PCE	111	217.3	28.4	1	33.5	866	30
FS InVision	FS 6217T RIB ↗	TRE	112	215.9	26.6	1	32.8	875	27
Seed Consultants	SC1112AM ↗	AM	111	211.9	24.9	1	32.5	874	28
Buckeye Hybrids	RR9012 AA ↗	AA	110	211.7	26.1	1	33.5	863	31
PIONEER	P0859AM CK	AM	108	212.6	24.5	1	33.5	880	23
				Averages =	222.8	27.3	1	33.1	897
				LSD (0.10) =	12.9	1.4	ns		
				LSD (0.25) =	6.8	0.7	ns		
				C.V. =	6.4				
Matt Turner mattturner1979@yahoo.com, (317) 606-9040				Historic yield: 197.04 bu/a, 6 yr(s)					

Yield & Income Factors: Base Moisture = 15.5% Shrink = 1.3 Drying = \$0.04 Prices: GMO = \$4.50; non-GMO = \$5.00

Report Date: 10/27/2023

† See last page for abbreviation descriptions. Dark colored row identifies the check product found in early- and full-season tests. **Bold** yields are significantly above test average by LSD(0.10). **Italicized** brands exceed the grain moisture limit for this test. **ns** = column values not significantly different. ↗ Links to full product yield results at www.firstseedtests.com

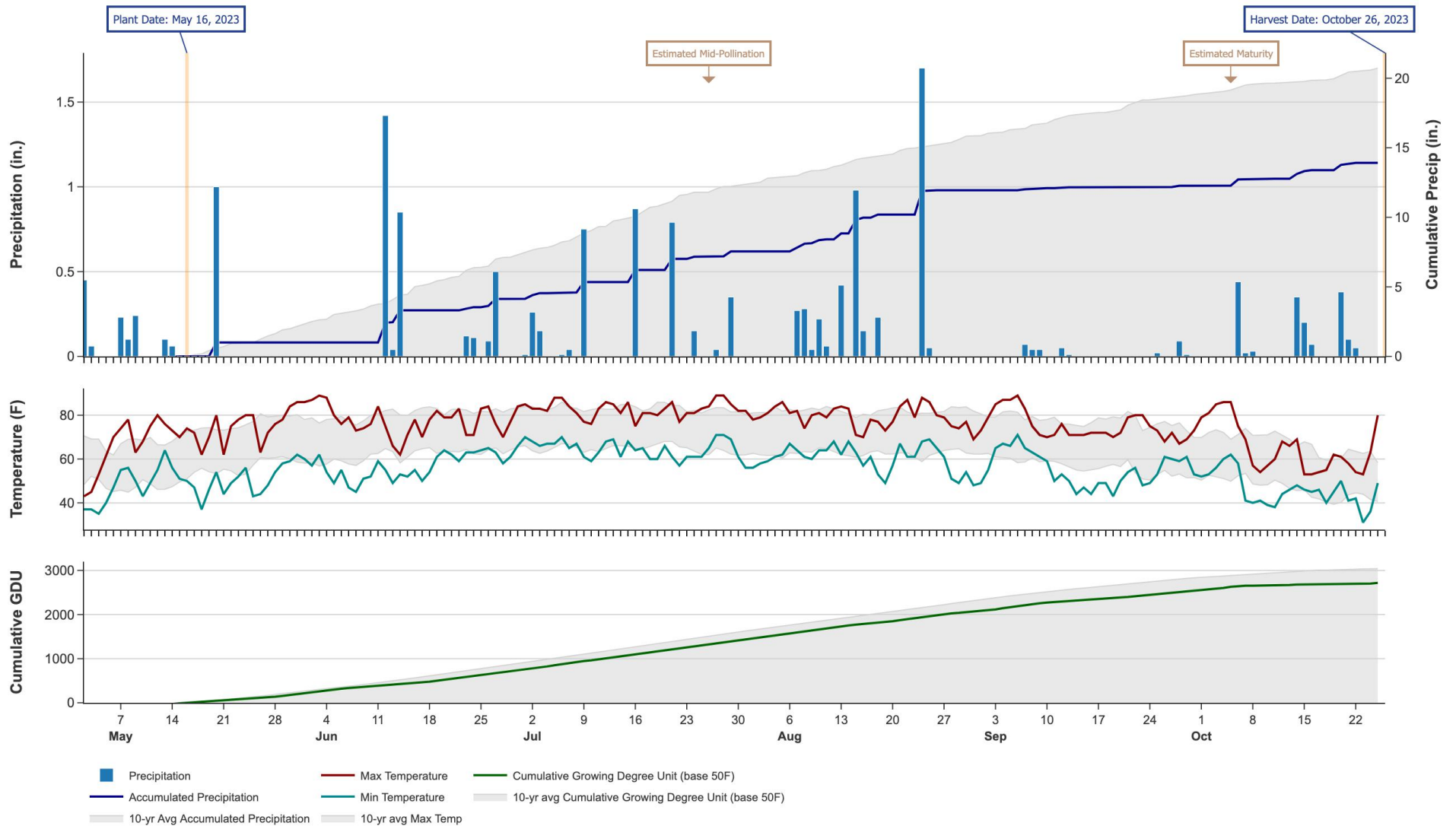
©2023, All rights reserved to Farmers' Independent Research of Seed Technologies, LLC.

Additional reports available at www.firstseedtests.com

2023 Corn - Ohio Northwest [OHNW]

Weather Conditions Summary at DOLA, OH

Monthly Total	May*	Jun	Jul	Aug	Sep	Oct*	Total
Precip (in) (Diff)	2.2 4.1 (-1.8)	3.1 5.1 (-2.0)	3.4 5.0 (-1.6)	4.4 3.5 (+0.9)	0.3 3.0 (-2.6)	1.6 1.9 (-0.2)	15.2 22.6 (-7.5)
GDU Avg (Diff)	350 388 (-38)	522 636 (-114)	728 742 (-14)	614 690 (-76)	465 512 (-47)	189 207 (-18)	2868 3177 (-309)



* First monthly total starts on the date 14 days prior to planting and final monthly total ends on the harvest date.

Note: Weather information from PRISM Climate Group. Data may be revised by the provider after retrieval. FIRST will not revise or update reports to reflect any weather data changes. For information purposes only.

2023 Corn - Ohio Northwest [OHNW]

Early-Season Test Products (40 Total)

Company/Brand	Product/Brand	Technology	RIB	RM	Seed Treat.
Augusta	A1954 PCE	PCE	N	104	CM,C2
Augusta	A1958-DV	DV	N	108	CM,C2
Augusta	A2057-3111	3111	N	107	CM,C2
Buckeye Hybrids	RR8815 VT2P	VT2P	N	108	AC,P5,B360
Dyna-Gro	D44DC73RIB	VT2PDG	Y	104	AC,P5V
Dyna-Gro	D47SS93	STX	N	107	AC,P5V
Dyna-Gro	D48VC84	VT2P	N	108	AC,P5V
Ebberts	7188PC	PC	N	108	Ebberts
Ebberts	7209TR RIB	TRE	Y	108	Ebberts
Ebberts	9779SSX RIB	STX	Y	108	Ebberts
FS InVision	FS 5335P RIB	STXP	Y	103	AC,P5V,EDC-EL
FS InVision	FS 5525VDG RIB	VT2PDG	Y	105	AC,P5V,EDC-EL
FS InVision	FS 5594X RIB	STX	Y	105	AC,P5V,EDC-EL
FS InVision	FS 5725X RIB	STX	Y	107	AC,P5V,EDC-EL
FS InVision	FS 5835V RIB	VT2P	Y	108	AC,P5V,EDC-EL
Golden Harvest	G03B19-AA	AA	Y	103	CM,C5,Va
Golden Harvest	G08B38-AA	AA	Y	108	CM,C5,Va
Integra	5443 DGVT2PRIB	VT2PDG	N	104	AC,P5V,SU+Zn
Integra	5584 PWE	PCE	N	105	AC,P5V
Integra	5802 VT2PRIB	VT2P	Y	108	AC,P5V,SU+Zn
M & W Seeds	MW 44V83 GC	V	Y	107	Ti
M & W Seeds	MW C104 PWR GC	PC	Y	104	Ti
NK Brand	NK0835-AA	AA	Y	108	CM,C5,Va
Partners Brand	PB 7928-VT2PRIB	VT2P	Y	109	ACi
Pioneer	P0035AM GC	AM	Y	100	Lum
Pioneer	P0720AM GC	AM	Y	107	Lum, L1
Pioneer	P0859AM CK	AM	Y	108	Lum
Renk	RK625DGV2P	VT2PDG	N	104	AC,P2
Renk	RK703PWE	PCE	N	106	Lum,P5V
Renk	RK707TRE	TRE	N	105	AC,P5V,B300
Rob-See-Co	RC5422-PCE	PCE	N	104	CM,C2,Vi,Va
Rob-See-Co	RC5694-VT2P	VT2P	Y	106	AC,P2
Seed Consultants	SC1042Q	QR	Y	104	Lum, L1
Seed Consultants	SC1054AM	AM	Y	105	Lum, L1
Seed Consultants	SC1084AM	AM	Y	108	Lum, L1
Wyckoff	2432 TRE RIB	TRE	Y	105	AC,P5V
Wyckoff	2515 VT2P RIB	VT2P	Y	107	AC,P2
Wyckoff	2583 TRE RIB	TRE	Y	108	AC,P2
Wyckoff	2584 VT2P RIB	VT2P	Y	108	AC,P2
Wyckoff	2632 SS RIB	STX	Y	108	AC,P5V

* FIRST does not inspect products for refuge blend. N* indicates the product was entered without a refuge component by the sponsoring seed company. Prior year entries may contain refuge blend.

2023 Corn - Ohio Northwest [OHNW]

Full-Season Test Products (40 Total)

Company/Brand	Product/Brand	Technology	RIB	RM	Seed Treat.
Augusta	A1160-AA	AA	N	110	CM,C2
Augusta	A2061-PWE	PCE	N	111	CM,C2
Augusta	A2262-3110	3110	N	112	CM,C2
Augusta	A6162-DV	DV	N*	112	CM,C2
Buckeye Hybrids	RR9012 AA	AA	Y	110	CM,C2,Vi,Va
Buckeye Hybrids	RR9206 VT2P	VT2P	Y	112	CM,C2,Vi,Va
Dyna-Gro	D50VC09RIB	VT2P	Y*	110	AC,P5V
Ebberts	6220VT2P RIB	VT2P	Y	110	Ebberts
Ebberts	6444VT2P RIB	VT2P	Y	114	Ebberts
Ebberts	6883DGV2P RIB	VT2PDG	Y	112	Ebberts
FS InVision	FS 6017V RIB	VT2P	Y	110	AC,P5V,EDC-EL
FS InVision	FS 6025X RIB	STX	Y	110	AC,P5V,EDC-EL
FS InVision	FS 6133VDG RIB	VT2PDG	Y	111	AC,P5V,EDC-EL
FS InVision	FS 6137PC	PCE	N	111	CM,C2,Vi,Va
FS InVision	FS 6217T RIB	TRE	Y	112	AC,P5V,EDC-EL
Golden Harvest	G10B61-AA	AA	Y	110	CM,C5,Va
Golden Harvest	G10L16-DV	DV	Y	110	AVC,C1,Va
Golden Harvest	G11V76-AA	AA	Y	111	CM,C5,Va
Golden Harvest	G12S75-D	D	Y	112	AVC,C1,Va
Integra	6061 STXRIB	STX	Y	110	AC,P5V,SU+Zn
Integra	6244 PWE	PCE	N	112	AC,P5V
Integra	6274 VT2PRIB	VT2P	Y	112	AC,P5V
NK Brand	NK1040-AA	AA	Y	110	CM,C5,Va
NK Brand	NK1082-DV	DV	Y	110	AVC,C1,Va
NK Brand	NK1188-AA	AA	Y	111	CM,C5,Va
Pioneer	P0859AM CK	AM	Y	108	Lum
Renk	RK766SSPRO	STXP	N	109	AC,P5V,B300
Renk	RK773TRE	TRE	N	109	AC,P5V,B300
Renk	RK811PWE	PCE	N	111	Lum,P5V
Rob-See-Co	RC5929-VT2P	VT2P	Y	109	AC,P5V
Rob-See-Co	RC6131-TRE	TRE	Y	111	CM,C2,Vi,Va
Rob-See-Co	RC6232-DGV2P	VT2PDG	Y	112	AC250
Seed Consultants	SC1093AM	AM	Y	109	Lum, L1
Seed Consultants	SC1112AM	AM	Y	111	Lum, L1
Seed Consultants	SC1122Q	QR	Y	112	Lum, L1
Wyckoff	2656 PCE	PCE	N	111	CM,C2,Vi,Va
Wyckoff	2667 DGV2P RIB	VT2PDG	Y	111	AC,P2
Wyckoff	2678 VT2P RIB	VT2P	Y	111	AC,P2
Wyckoff	2679 DGV2P RIB	VT2PDG	Y	112	AC,P2
Wyckoff	2711 VT2P RIB	VT2P	Y	112	AC,P2

* FIRST does not inspect products for refuge blend. N* indicates the product was entered without a refuge component by the sponsoring seed company. Prior year entries may contain refuge blend.

Footnotes and Abbreviations Descriptions

Brand Footnotes

CK	Identifies a check product included in early- and full-season tests.
GC	Grower Comparison product included by FIRST when space permits.
^	Innotech™ brand seed is distributed by Rob-See-Co, LLC. Innotech™ is a trademark of Syngenta. Power Plus® brand seed is distributed by Burrus. Power Plus® is a registered trademark of Corteva Agriscience.

Corn Technologies

3110	Agrisure® Viptera® 3110 (Vip, CB,LL,GT)
3111	Agrisure® Viptera® 3111 (Vip,CB,RW,LL,GT)
AA	Agrisure® Above (CB,HX,LL,GT), formerly Agrisure® 3120
AM	Optimum® AcreMax®
D	Duracade™ (CB,HX,RW,RW2,LL,GT), formerly Agrisure Duracade® 5122
DV	DuracadeViptera™ (Vip,CB,HX,RW,RW2,LL,GT), formerly Agrisure Duracade® 5222
PC	PowerCore®
PCE	PowerCore® Enlist®
QR	Qrome®
STX	SmartStax®
STXP	SmartStax® Pro with RNAi Technology
TRE	Trecepta®
V	Viptera™ (Vip,CB,HX,LL,GT), formerly Agrisure Viptera® 3220
VT2P	VT Double PRO®
VT2PDG	DroughtGard® with VT Double PRO®

NOTE: The refuge component genetics may vary in a refuge blend seed product.

Corn Seed Treatments*

NA	Not Available
AC250	Acceleron® 250
ACi	Acceleron® Standard Insecticide-Fungicide
AC,P2	Acceleron® 250
AC,P5,B360	Acceleron® 500 with BioRise™ B-360 ST
AC,P5V	Acceleron® Poncho 500/Votivo
AC,P5V,B300	Acceleron® Poncho 500/Votivo with B-300 SAT
AC,P5V,EDC-EL	Acceleron® ELITE Poncho 500/Votivo with Enhanced Disease Control
AC,P5V,SU+Zn	Acceleron® Poncho 500/Votivo, StepUp SP, StepUp Zn
AVC,C1,Va	Avicta® Complete 1250 with Vayantis®
CM,C2	CruiserMaxx® 250
CM,C2,Vi,Va	CruiserMaxx® 250 with Vibrance, Vayantis®
CM,C5,Va	CruiserMaxx® 500 with Vayantis®
Ebberts	Ebberts Complete Corn (Ebberts Field Seeds)
Lum	LumiGEN™ (Corteva Agriscience)
Lum, L1	LumiGEN, Lumisure 1250
Lum,P5V	LumiGEN™ Poncho 500/Votivo
Ti	Titan Corn 250 (M & W Seeds)

*Seed treatments may include unspecified plant health promoting components.