

2019 Corn Product and Regional Information

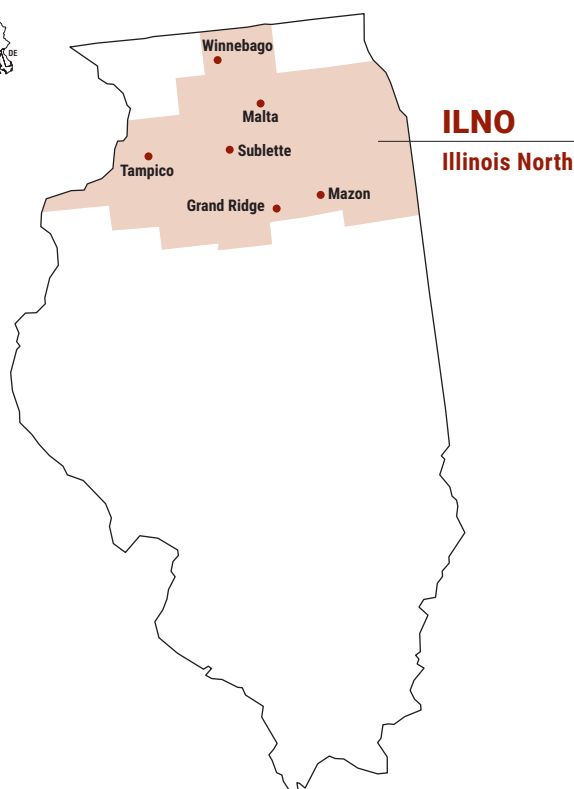
Illinois North - ILNO

FIRST Field Manager

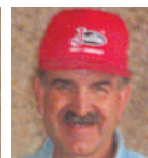


Jason Beyers

FIRST NCB, Inc.
31150 Harvest Rd, Lanark, IL 61046
(815) 985-7369
beyers@frontiernet.net



Cooperating Farmers



Don & Ralph Walter
Grand Ridge, IL



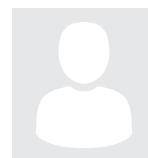
Steve Drendel
Malta, IL



Lynard Tryner
Mazon, IL



Randy Faber
Sublette, IL



Todd Wetzell
Tampico, IL



Eric Swanson
Winnebago, IL

Site	Farmer Members	Soil Texture	Tillage	Previous Crop	Date Planted
Grand Ridge, IL	Don & Ralph Walter	silt loam	conventional w/ fall till	soybean	04/23/2019
Malta, IL	Steve Drendel	silt loam	minimum w/o fall till	soybean	06/03/2019
Mazon, IL	Lynard Tryner	silty clay loam	minimum w/o fall till	soybean	06/04/2019
Sublette, IL	Randy Faber	silt loam	conventional w/ fall till	corn, 2+ yr	05/16/2019
Tampico, IL	Todd Wetzell	sandy loam	minimum w/o fall till	soybean	04/23/2019
Winnebago, IL	Eric Swanson	silt loam	conventional w/ fall till	corn	06/11/2019

2019 Ultra-Early-Season Corn Grain Entries

Brand†	Tech.†	RM	Region(s) Tested		
AUGUSTA Augusta Seed Corporation www.augustaseed.com PO Box 899, Verona VA 24482 (540) 886-6055					
A3054	3110	104	IANCa NCTSa	IANWa WISOa	ILNOu
CORNELIUS Cornelius Seed www.corneliusseed.com 14760 317th Ave., Bellevue IA 52031 (800) 218-1862					
C478DP	VT2P	106	IAECa ILNOu	IANCa NCTSa	IANWa WISOa
C6401SS	STX	104	ILNOu	NCTSa	
C6438DP	VT2P	104	IANCa WISOa	IANWa	ILNOu
DAIRYLAND Dairyland Seed Co., Inc. [Corteva Agriscience] www.dairylandseed.com PO Box 958, West Bend WI 53095 (800) 236-0163					
DS-4310AM	AM	103	ILNOu MITH MNSWb WISOa	INNOa MIWC NCTSa	MISOa MNSEb SDSEb
DS-4440AM	AM,B	104	ILNOu MIWC NCTSa	INNOa MNSEb SDSEb	MISOa MNSWb WISOa
DS-4580AM	AM	105	ILNOu NCTSa	INNOa SDSEb	MISOa WISOa
DS-7004RA	PC,B	104	ILNOu MNSEb SDSEb	MISOa MNSWb WISOa	MIWC NCTSa
RPM-4318AM	AM,B	105	ILNOu	MISOa	
RPM-4329AM	AM,B	105	ILNOu MNSEb SDSEb	INNOa MNSWb WISOa	MISOa NCTSa
FS INVISION GROWMARK, Inc. www.fsseed.com 1701 Towanda Ave., PO Box 2205, Bloomington IL 61701 (309) 557-6399					
FS 51QX1 RIB	STX,B	101	IANCa MISOa NCTSa	IANWa MITH WICEb	ILNOu MIWC WISOa
FS 53ZX1 RIB	STX,B	103	IANCa INNOa MIWC WISOa	IANWa MISOa NCTSa	ILNOu MITH OHNa
FS 5594X RIB	STX,B	105	IAECa IAWCa ILWCa WISOa	IANCa ILECa MISOa	IANWa ILNOu NCTSa

Brand†	Tech.†	RM	Region(s) Tested		
FS 55RL1 EZR	3220,B	105	IANCa INNOa OHNa	IANWa MISOa WISOa	ILNOu NCTSa
GOLDEN HARVEST Golden Harvest Brand [Syngenta] www.goldenharvestseeds.com 2001 Butterfield Road - Suite 1600, Downers Grove IL 60515 (800) 944-7333					
G03C84-3120-EZR	3120,B	103	ILNOu		
G03R40-3110	3110	103	IANCa INNOa MIWC OHNa	IANWa MISOa MNSEb SDSEb	ILNOu MITH NCTSa WISOa
G05K08-3010A-EXR	3010,A	105	IAECa IAWCa NCTSa WISOa	IANCa ILNOu NENEa	IANWa MISOa SDSEb
HEFTY Hefty Seed Company www.heftyseed.com 47504 252nd St., Baltic SD 5700 (866) 769-7200					
H5334SS	STX	103	ILNOu		
H5432VT2P	VT2P	104	IANCa SDSEb	ILNOu	MNSEb
H5524SSRIB	STX,B	105	ILNOu		
LG SEEDS LG Seeds [AgReliant Genetics, LLC] www.lgseeds.com 22827 Shissler Rd., Elmwood IL 61529 (800) 752-6847					
LG51C48VT2	VT2P	101	ILNOu	NCTSa	
LG5525STXRIB	STX,B	105	ILNOu	NCTSa	
MYCOGEN Mycogen Seeds [Corteva Agriscience] www.dowagro.com/mycogen 9330 Zionsville Rd., Indianapolis IN 46268 (800) MYCOGEN					
REV 1247AMXT	AMXT,B	102	ILNOu		
REV 1327AMXT	AMXT,B	103	ILNOu	MITH	
NK BRAND NK Brand [Syngenta] www.nkseeds.com 2001 Butterfield Road - Suite 1600, Downers Grove IL 60515 (800) 258-0521					
NK0330-3120-EZR	3120,B	103	ILNOu	SDSEb	
NK0472-3110	3110	104	DMNOa ILNOu MNSWb SDSEb	IANCa MISOa NCTSa WISOa	IANWa MNSEb PACE
NUTECH NuTech Seed, LLC [Corteva Agriscience] www.nutechseed.com 201 Knollwood Dr., Ste. A, Champaign IL 61820 (888) 647-3478					
5F-601AM	AM,B	100	IANCa MNSEa	IANOu NCTSa	ILNOu
5L-504AMXT	AMXT,B	104	ILNOu	MNSEb	
64D1YHR	AM,B	104	ILNOu	NCTSa	

Brand‡	Tech.†	RM	Region(s) Tested		
65H2Q	QR,B	105	IAECa MNSEb	IANCa NCTSa	ILNOu
E62A8Q	QR,B	102	ILNOu	NCTSa	
PIONEER DuPont Pioneer [Corteva Agriscience] www.pioneer.com PO Box 454, Johnston IA 50131 (800) 247-6803					
P0157AMXT GC	AMXT,AQ,B	101	IANCa MITH WISOa	IANWa MIWC	ILNOu WICEb
P0339AMXT GC	AMXT,AQ,B	103	IANCa MISOa	IANWa MITH	ILNOu
RENK Renk Seed Co. www.renseed.com 6809 Wilburn Rd., Sun Prairie WI 53590 (800) BUY-RENK					
RK621VT2P	VT2P	102	IANCa MISOa MNSWb SDSEa	IANWa MITH MNWCb WICEb	ILNOu MNSEb NCTSa WISOa
RK626SSTX	STX	102	IANCa MISOa MNWCb WISOa	IANWa MIWC SDSEa	ILNOu MNSWb WICEb
RK642VT2P	VT2P,B	103	IANCa MITH SDSEb	ILNOu MIWC WISOa	MISOa MNSEb

Brand‡	Tech.†	RM	Region(s) Tested		
RK717SSTX	STX,B	105	ILNOu NCTSa	MNSEb WISOa	MNSWb
STONE Stone Seed www.stoneseed.com 5965 W. State Rd. 97, Pleasant Plains IL 62677 (217) 546-8006					
5448RIB	STX,B	104	ILNOu	NCTSa	
WYFFELS Wyffels Hybrids, Inc. www.wyffels.com 13344 U.S. Hwy. 6, Geneseo IL 61254 (800) 369-7833					
W2236	VT2P	99	ILNOu SDSEa	ILNOu WISOa	MNSWa
W2506RIB	VT2P,B	101	IANCa MNSWa WISOa	IANWa NCTSa	ILNOu SDSEa
W3488RIB	STX,B	104	IANCa NCTSa	IANWa WISOa	ILNOu
W4196RIB	VT2P,B	105	IANCa MNSEb SDSEb	IANWa MNSWb WISOa	ILNOu NCTSa

Harvest reports will identify company as shown in bold

‡ Suffix GC = grower comparison, CK = check

† See last page for abbreviation descriptions

Regions in **BOLD** identify products tested in both 2018 & 2019
Regions in **BLUE** identify products that performed significantly above average in the 2018 test

2019 Early-Season Corn Grain Entries

Brand†	Tech.†	RM	Region(s) Tested		
AUGUSTA Augusta Seed Corporation www.augustaseed.com PO Box 899, Verona VA 24482 (540) 886-6055					
A3058	3120,A,B	108	IAECa ILSOa WISOb	IASOa NENEa NESEa	ILNOa
BECKS Beck's Superior Hybrids, Inc. www.beckshybrids.com 6767 E. 276 St., Atlanta IN 46031 (800) 937-2325					
5765AMXT GC	AMXT,B	107	IANCb	IANWb	ILNOa
BURRUS Burrus Bros. & Assoc. Growers www.burrusseed.com 826 Arenzville Rd., Arenzville IL 62611 (877) 4-BURRUS					
POWER PLUS 4A67^	AMXT,B	109	ILNOa		
POWER PLUS 4Y34^	OI	108	ILNOa	NCTsb	WISOb
CORNELIUS Cornelius Seed www.corneliusseed.com 14760 317th Ave., Bellevue IA 52031 (800) 218-1862					
C573DP	VT2P	108	IANCb NCTsb	IANWb WISOb	ILNOa
C575DP	VT2P	109	IAECa ILWCa	IANWb NCTsb	ILNOa
C577SS	STX	109	ILNOa	NCTsb	
DAIRYLAND Dairyland Seed Co., Inc. [Corteva Agriscience] www.dairylandseed.com PO Box 958, West Bend WI 53095 (800) 236-0163					
DS-4840AM	AM,B	108	ILNOa NCTsb	INCEa WISOb	INNOa
DS-4910AML	AML	109	ILNOa NCTsb	INCEa	INNOb
DS-7909RA	PC,B	109	ILNOa	INNOb	NCTsb
DEKALB DeKalb Brand [Bayer CropScience] www.dekalb.com 800 N. Lindbergh Blvd., St. Louis MO 63167 (800) 768-6387					
DKC58-34RIB GC	STX,B	108	IANCb ILWCa	IANWb	ILNOa
FS INVISION GROWMARK, Inc. www.fsseed.com 1701 Towanda Ave., PO Box 2205, Bloomington IL 61701 (309) 557-6399					
FS 57ZV1 RIB	VT2PB	107	IASOa INNOa OHNWa	ILNOa MOCE WISOb	INCEa MONOa
FS 57ZX1 RIB	STX,B	107	IAECa IAWCa ILWCa WISOb	IANCb ILECa MISOb	IANWb ILNOa NCTsb

Brand†	Tech.†	RM	Region(s) Tested		
FS 58RL1 EZR	3220,B	108	IAECa IASOa ILNOa INCEa OHNWa	IANCb IAWCa ILSOa INNOa WISOb	IANWb ILECa ILWCa NCTsb
FS 59VL1 EZR	3220,B	109	IAECa IASOa ILNOa INCEa MONOa	IANCb IAWCa ILSOa INNOb NCTsb	IANWb ILECa ILWCa MOCE OHNWb
GOLDEN HARVEST Golden Harvest Brand [Syngenta] www.goldenharvestseeds.com 2001 Butterfield Road - Suite 1600, Downers Grove IL 60515 (800) 944-7333					
G06Q68-3220	3220,B	106	ILNOa	MISOb	WISOb
G08D29-3120A-EZR	3120,A,B	108	IAECa ILSOa	IANCb NCTsb	ILNOa NENEa
G08M20-3120-EZR	3120,B	108	IAECa ILECa INCEa OHNWa	IANCb ILNOa INNOa WISOb	IANWb ILWCa NCTsb
G09A86-3330-EZR	3330,B	109	IAECa INCEa OHNWb	ILNOa INNOb	ILWCa NCTsb
G09Y24-3220A-EZR	3220,A,B	109	IANWb INNOb	ILNOa NESEa	INCEa OHNWb
GREAT HEART Great Heart Seed www.greatheartseed.com 220 W. Washington St., Paris IL 61944 (877) 243-2071					
HT-6843VT2P	VT2PB	108	ILECa INNOa	ILNOa MISOb	ILWCa
HEFTY Hefty Seed Company www.heftyseed.com 47504 252nd St., Baltic SD 5700 (866) 769-7200					
H5624SSRIB	STX,B	106	ILNOa	SDSEb	
H5734SS	STX	107	IANCb NENEa	IANWb NESEa	ILNOa SDSEb
H5832VT2P	VT2P	108	IANCb NENEa	IANWb NESEa	ILNOa SDSEb
H5922VT2PRIB	VT2PB	109	IANCb NENEa	IANWb	ILNOa
INTEGRA Integra Fortified Seed www.integrased.com 2219 229th Place, Ames IA 50014 (515) 292-1300					
5719	VT2PB	107	IAECa IAWCa ILWCa SDSEb	IANCb ILECa MISOb WISOb	IANWb ILNOa NESEa

Brand†	Tech.†	RM	Region(s) Tested		
5770	STX	107	IAECa IAWCa WISOb	IANCb ILNOa NENEa	IANWb NENEa
5939	STX,B	109	IAECa IAWCa ILWCa	IANCb ILECa ILNOa	IANWb ILNOa
CX821109	3111	109	ILNOa	NENEa	
LG SEEDS LG Seeds [AgReliant Genetics, LLC] www.lgseeds.com 22827 Shissler Rd., Elmwood IL 61529 (800) 752-6847					
LG59C66VT2PRIB	VT2PB	109	ILNOa	ILWCa	NCTSb
LG59C72VT2	VT2P	109	ILECa	ILNOa	
NK BRAND NK Brand [Syngenta] www.nkseeds.com 2001 Butterfield Road - Suite 1600, Downers Grove IL 60515 (800) 258-0521					
NK0624-3220-EZR	3220,B	106	IAECa MISOb SDSEb	ILNOa MNSWb WISOb	INNOa OHNWa
NK0763-3122-EZR	3122,B	107	ILNOa		
NK0886-3120-EZR	3120,B	108	DMNOB IANWb ILNOa INNOa WISOb	IAECa IAWCa ILWCa OHNWa PACE	IANCb ILECa INCEa
NK0962-3220A-EZR GC	3220,A,B	109	ILNOa	ILWCa	
NUTECH NuTech Seed, LLC [Corteva Agriscience] www.nutechseed.com 201 Knollwood Dr., Ste. A, Champaign IL 61820 (888) 647-3478					
5FB-8808AM	AM,B	108	IAECa ILECa ILWCa NCTSb	IANCb ILNOa MOCE	IASOa ILSOa MONOa
5FB-9909AM	AM,B	109	IANCb ILNOa NCTSb	IASOa ILSOa	ILECa ILWCa
66B6Q	QR,B	106	IAECa MNSEb	IANCa NCTSa	ILNOa
68B3VYHR	OL,B	108	ILECa NCTSb	ILNOa	ILWCa
69A6Q	QR,B	109	IAECa ILECa ILWCa NCTSb	IANCb ILNOa MOCE	IASOa ILSOa MONOa
PIONEER DuPont Pioneer [Corteva Agriscience] www.pioneer.com PO Box 454, Johnston IA 50131 (800) 247-6803					
P0707AMXT GC	AMXT,B	107	ILNOa	WISOb	
P0825AMXT CK	AMXT,B	108	ILNOa	ILNOb	

Brand†	Tech.†	RM	Region(s) Tested		
PROHARVEST ProHarvest Seeds, LLC www.proharvestseeds.com 2737 N 700 East Rd., Ashkum IL 60911 (866) 807-7015					
6828SS	STX	107	IANCb ILNOa NESEa	IANWb ILWCa OHNWa	ILECa NENEa
8052SS	STX	109	IANCb ILNOa	IANWb ILWCa	ILECa OHNWb
RENK Renk Seed Co. www.renkseed.com 6809 Wilburn Rd., Sun Prairie WI 53590 (800) BUY-RENK					
RK710DGV2P	VT2P,DG,B	106	IAECa IAWCa MNSEb NENEa	IANCa ILNOa MNSWb SDSEb	IANWa MISOb NCTSa WISOb
RK763VT2P	VT2P,B	108	IAECa IAWCa NCTsb	IANCb ILNOa NENEa	IANWb INNOa WISOb
RK765VT2P	VT2P	108	IAECa IAWCa ILWCa NENEa	IANCb ILECa KSNEa NESEa	IANWb ILNOa NCTsb WISOb
RK779SSTX	STX,B	108	IANCb ILECa INNOa NESEa	IANWb ILNOa NCTsb	IASOa ILWCa NENEa
STONE Stone Seed www.stoneseed.com 5965 W. State Rd. 97, Pleasant Plains IL 62677 (217) 546-8006					
5638RIB	STX,B	106	ILNOa	NCTsa	
5858RIB	STX,B	108	ILECa NCTsb	ILNOa	ILWCa
WYFFELS Wyffels Hybrids, Inc. www.wyffels.com 13344 U.S. Hwy. 6, Geneseo IL 61254 (800) 369-7833					
W4358RIB	STX,B	106	IANCa MNSEb WISOb	IANWa MNSWb	ILNOa NCTsa
W4638	STX	107	IANCb ILWCa NCTsb	ILECa MNSEb WISOb	ILNOa MNSWb
W5086	VT2P	107	IAECa IAWCa ILWCa NCTsb	IANCb ILECa MNSEb SDSEb	IANWb ILNOa MNSWb WISOb
W5518RIB	STX,B	109	ILECa NCTsb	ILNOa	ILWCa

Harvest reports will identify company as shown in bold

† Suffix GC = grower comparison, CK = check

† See last page for abbreviation descriptions

Regions in **BOLD** identify products tested in both 2018 & 2019
Regions in **BLUE** identify products that performed significantly above average in the 2018 test

2019 Late-Season Corn Grain Entries

Brand‡	Tech.†	RM	Region(s) Tested		
BURRUS Burrus Bros. & Assoc. Growers www.burruseed.com 826 Arenzville Rd., Arenzville IL 62611 (877) 4-BURRUS					
BURRUS 6G34VT2P	VT2P,B	112	ILNOb		
BURRUS 6Q76SSTX	STX,B	113	ILNOb		
POWER PLUS 5N78Q^	QR,B	111	ILNOb	NCTsb	
CORNELIUS Cornelius Seed www.corneliusseed.com 14760 317th Ave., Bellevue IA 52031 (800) 218-1862					
7228 VT2P	VT2P	112	IAECb	ILNOb	ILWCb
C633DP	VT2P	110	IAECa ILNOb	IANCb ILWCa	IANWb NCTsb
C7125DP	VT2P	110	IAECa	ILNOb	ILWCa
DAIRYLAND Dairyland Seed Co., Inc. [Corteva Agriscience] www.dairylandseed.com PO Box 958, West Bend WI 53095 (800) 236-0163					
RPM-5018AM	AM,B	110	ILNOb NCTsb	INCEa	INNOb
RPM-5319AM	AM,B	112	ILNOb	INCEb	INNOb
DEKALB DeKalb Brand [Bayer CropScience] www.dekalb.com 800 N. Lindbergh Blvd., St. Louis MO 63167 (800) 768-6387					
DKC60-87RIB GC	STX,B	110	ILECa	ILNOb	ILWCa
DKC60-88RIB GC	VT2P,B	110	IAECa ILECa KSNEa NENEa	IANCb ILNOb MISOb NESEa	IANWb ILWCa MONOa
DKC63-90RIB GC	STX,B	113	ILNOb		
DYNA-GRO Dyna-Gro Seed [Nutrien Ag Solutions] www.dynagroseed.com 615 Hilliard Rome Rd., Columbus OH 43228 (614) 620-5008					
D50SS48	STX	110	IAECa NCTsb	ILECa	ILNOb
FS INVISION GROWMARK, Inc. www.fsseed.com 1701 Towanda Ave., PO Box 2205, Bloomington IL 61701 (309) 557-6399					
FS 60UX1 RIB	STX,B	110	IAECa IAWCa ILWCa	IANCb ILECa NCTsb	IANWb ILNOb
FS 6194V RIB	VT2P,B	111	IAECb ILECb ILWCb MOCE	IASOa ILNOb INCEb MONOa	IAWcb ILSOa INNOb OHNWb
FS 6299L2 EZR	3220,B	112	ILNOb OHNWb	INCEb	INNOb
FS 62ZX1 RIB	STX,B	112	IAECb ILNOb	IAWcb ILWcb	ILECb

Brand‡	Tech.†	RM	Region(s) Tested		
FS 63ZX1 RIB	STX,B	113	IAECb ILNOb	IAWcb ILWcb	ILECb INCEb
GOLDEN HARVEST Golden Harvest Brand [Syngenta] www.goldenharvestseeds.com 2001 Butterfield Road - Suite 1600, Downers Grove IL 60515 (800) 944-7333					
G10L16-3330A-EZR	3330,A,B	110	IAECa IASOa ILNOb MOCE NESEa	IANCb IAWCa ILSOa MONOa	IANWb ILECa ILWCa NCTsb
G12U17-3010	3010	112	IAECb ILECb INCEb MONOa	IASOb ILNOb INNOb NENEb	IAWcb ILSOa MOCE OHNWb
G12W66-3220-EZR GC	3220,B	112	ILNOb		
G13H15-3120-EZR	3120,B	113	IAECb ILECb KSNEb	IASOb ILNOb MONOb	IAWcb ILWcb
G13T41-3120-EZR GC	3120,B	113	ILNOb		
G13Z50-3220-EZR	3220,B	113	IAECb ILSOB	ILECb ILWcb	ILNOb INCEb
GREAT HEART Great Heart Seed www.greatheartseed.com 220 W. Washington St., Paris IL 61944 (877) 243-2071					
HT-7003SS	STX,B	110	ILNOb	INNOb	
HT-7026SS	STX,B	110	ILNOb	INNOb	
HT-7123SS	STX,B	111	ILNOb		
HT-7302SS	STX,B	113	ILNOb		
HEFTY Hefty Seed Company www.heftyseed.com 47504 252nd St., Baltic SD 5700 (866) 769-7200					
H6024SSRIB	STX,B	110	ILNOb	NENEa	
H6132VT2P	VT2P	111	ILECb NESEa	ILNOb	NENEb
H6134SS	STX	111	ILNOb	ILWcb	NENEb
H6332VT2PRIB	VT2P,B	113	ILECb NENEb	ILNOb NESEb	ILWcb
INTEGRA Integra Fortified Seed www.integrased.com 2219 229th Place, Ames IA 50014 (515) 292-1300					
6284	STX,B	112	IAECb ILNOb NESEa	IAWcb ILWcb	ILECb NENEb
CX811113	STX,B	113	IAECb ILNOb	IAWcb ILWcb	ILECb

Brand†	Tech.†	RM	Region(s) Tested		
CX821111	3010	111	IAECb ILNOb NESEa	IAWCb ILWCb	ILECb NENEb
CX901110	VT2P	110	IANCb ILNOb NESEa	IANWb ILWCa	ILECa NENEa
LG SEEDS LG Seeds [AgReliant Genetics, LLC] www.lgseeds.com 22827 Shissler Rd., Elmwood IL 61529 (800) 752-6847					
LG60C33VT2	VT2P	110	ILECa NCTsb	ILNOb	ILWCa
LG62C02VT2RIB	VT2P,B	112	ILECb MOCE	ILNOb MONOa	ILSOa
NK BRAND NK Brand [Syngenta] www.nkseeds.com 2001 Butterfield Road – Suite 1600, Downers Grove IL 60515 (800) 258-0521					
NK1082-3330A-EZR	3330,A,B	110	IAECa ILECa ILWCa KSNEa NCTsb OHNBWb	IASOa ILNOb INCEa MOCE NENEa	IAWCa ILSOa INNOb MONOa NESEa
NK1205-3120-EZR	3120,B	112	DMNOb IAWCb ILSOa INNOb MONOa PASE	IAECb ILECb ILWCb KSNEa NESEa	IASOb ILNOb INCEb MOCE OHNBWb
NK1354-3220-EZR	3220,B	113	IAECb ILECb ILWCb NENEb	IASOb ILNOb INCEb NESEb	IAWCb ILSOb MONOb
NUTECH NuTech Seed, LLC [Corteva Agriscience] www.nutechseed.com 201 Knollwood Dr., Ste. A, Champaign IL 61820 (888) 647-3478					
5FB-1111AM	AM,B	111	IAECb ILWCb	ILECb MOCE	ILNOb MONOa
5FB-2213AM	AM,B	113	IAECb ILNOb MOCE	IASOb ILSOb MONOb	ILECb ILWCb
5FB-6313AM	AM,B	113	ILECb ILWCb	ILNOb MONOb	ILSOb
70B2Q	QR,B	110	IANCb ILNOb MOCE	IASOa ILSOa MONOa	ILECa ILWCa NCTsb
71C1PCR	PC,B	112	IASOb	ILNOb	
PIONEER DuPont Pioneer [Corteva Agriscience] www.pioneer.com PO Box 454, Johnston IA 50131 (800) 247-6803					
P0825AMXT CK	AMXT,B	108	ILNOa	ILNOb	

Brand†	Tech.†	RM	Region(s) Tested		
P1197AMXT GC	AMXT,B	111	ILNOb		
PROHARVEST ProHarvest Seeds, LLC www.proharvestseeds.com 2737 N 700 East Rd., Ashkum IL 60911 (866) 807-7015					
8147SS	STX	111	ILECb NENEb	ILNOb NESEa	ILWCb
8324VT2P	VT2P	113	ILECb NENEb	ILNOb NESEb	ILWCb OHNBWb
RENK Renk Seed Co. www.renkseed.com 6809 Wilburn Rd., Sun Prairie WI 53590 (800) BUY-RENK					
RK807SSTX	STX	111	IAECb ILECb ILWCb NENEb	IASOa ILNOb KSNEa NESEa	IAWCb ILSOa MONOa
RK842SSTX	STX,B	112	IAECb ILNOb KSNEa NESEa	IAWCb ILSOa MONOa	ILECb INNOb NENEb
RK937VT2P	VT2P,B	113	IAECb ILECb ILWCb NENEb	IASOb ILNOb KSNEb NESEb	IAWCb ILSOb MONOb
STONE Stone Seed www.stoneseed.com 5965 W. State Rd. 97, Pleasant Plains IL 62677 (217) 546-8006					
6072RIB	VT2P,B	110	ILECa	ILNOb	ILWCa
6198RIB	STX,B	111	ILECb	ILNOb	ILWCb
6368RIB	STX,B	113	ILECb	ILNOb	ILWCb
WYFFELS Wyffels Hybrids, Inc. www.wyffels.com 13344 U.S. Hwy. 6, Geneseo IL 61254 (800) 369-7833					
W6408RIB	STX,B	110	IAECa IASOa ILNOb	IANCb IAWCa ILWCa	IANWb ILECa NCTsb
W6826	VT2P	111	IAECb ILNOb	IANWb ILSOa	IASOa NCTsb
W7198	STX	112	ILNOb	ILSOa	INCEb
W7726	VT2P	113	IAECb ILECb ILWCb NESEb	IASOb ILNOb INCEb	IAWCb ILSOb NENEb
W7878	STX	114	IAECb ILECb ILWCb NENEb	IASOb ILNOb INCEb NESEb	IAWCb ILSOb MONOb

Harvest reports will identify company as shown in bold

‡ Suffix GC = grower comparison, CK = check

† See last page for abbreviation descriptions

Regions in **BOLD** identify products tested in both 2018 & 2019
Regions in **BLUE** identify products that performed significantly
above average in the 2018 test

PRODUCT SUFFIX IDENTIFIERS

Code	Product Suffix Description
CK	Check product found in early- and full-season tests
GC	"Grower Comparison" product for farmer cooperator

TECHNOLOGY (Tech.) CODE LEGEND

Code	Technology Description
3000GT	Agrisure® 3000GT (CB,RW,LL,GT)
3010	Agrisure® 3010 (CB,LL,GT)
3011,A	Agrisure® Artesian® (CB,RW,LL,GT)
3110	Agrisure® Viptera® 3110 (Vip, CB,LL,GT)
3111	Agrisure® Viptera® 3111 (Vip,CB,RW,LL,GT)
3120	Agrisure® 3120 (CB,HX,LL,GT)
3122	Agrisure® 3122 (CB,HXX,RW,LL,GT)
3220	Agrisure® Viptera® 3220 (Vip,CB,HX,LL,GT)
3330	Agrisure® Viptera® 3330 (Vip,CB,HX,LL,GT)
A	Agrisure® Artesian®
AM	Optimum® AcreMaxv (YGCB,HX,LL,RR2)
AMT	Optimum® AcreMax®TRIssect (HX,RW,LL,RR2)
AMX	Optimum® AcreMax® Xtra (YGCB,HXT,LL,RR2)
AMXT	Optimum® AcreMax® Xtreme (YGCB,HXT,RW,LL,RR2)
AQ	Optimumv AQUAMaxv
CB	Agrisure® Corn Boreer
DG	Genuity® DroughtGard®
E	Enlist™ (2,4-D, glyphosate, fop herbicide tolerance)
GT	Agrisure® GT
HX	Herculex® 1, contains LL
HXRW	Herculex® Rootworm, contains LL
HXT	Herculex® Xtra (HX,HXRW,LL)
LL	LibertyLink®
None	conventional corn
OI	Optimum® Intrasect®, YHR (YGCB,HX,LL,RR2)
OIX	Optimum® Intrasect® Xtra, YXR (YGCB,HXT,LL,RR2)
OIXT	Optimum® Intrasect® Xtreme (YGCB,HXT,RW,LL,RR2)
PC	PowerCore™ (HX, VT2P)
RR2	Roundup Ready® 2 Corn
RW	Agrisure® Rootworm
STX	SmartStax® (VT3PHXT,RR2,LL)
Tre	Genuity® Trecepta™
VT2P	Genuity® VT Double PRO®
VT3P	Genuity® VT Triple PRO®
YGCB	YieldGard® Corn Borer

REFUGE BLEND* (RIB) SEED PRODUCTS

Code	Refuge Blend Descriptions
N	No
Y	Yes, refuge included in test product

* The genetics of the refuge component in a product may vary.

NOTES

Harvest reports will identify company as shown in **bold**

‡ Suffix **GC** = grower comparison, **CK** = check, **\$** = USB Sponsored Entry

† See last page for abbreviation descriptions

Regions in **BOLD** identify products tested in both 2018 & 2019

Regions in **BLUE** identify products that performed significantly above average in the 2018 test