

2013 Corn Silage Harvest Report for Wisconsin South Central [WISC]

Russ Warmka, Dodge County, WI 53933 [FOX LAKE]



Test by: Prairie Ag Services, Inc., Malta, IL

PREV. CROP/HERB: Alfalfa
 SOIL INFORMATION: Mendota-Plano silt loam, conventional w/o fall till, mod. high P, mod. high K, non-irrigated
 UNITS N-P-K Applied: 197-0-0, N Applied: 120 Spring, 77 Side
 PEST MANAGEMENT: Force, Impact, Atrazine, Hornet
 SEEDED - RATE: May 17 32-38,000 /A
 HARVESTED - STAND: Sep 13 35,100 /A

103 - 110 Day CRM
 L2013WISC08

All 30 Products Tested, 3 Rep. Yield Average

| Company/Brand | Product/Brand† | Technology ¹ | CRM | Type† | Yield at | | Dry Matter (%) | Crude Protein (% DM) | Starch (% DM) | NEL (Mcal/lb) | NDF (% DM) | NDFd 30 Hour (% NDF) | Milk/Ton DM†† | | Milk/Acre (Lbs) |
|---------------|----------------|-------------------------|-----|-------|-------------|----------------|----------------|----------------------|---------------|---------------|------------|----------------------|---------------|------|-----------------|
| | | | | | (Tons/A) | Stand (x1,000) | | | | | | | (Lbs) | Rank | |
| Cornelius | C547VT3 | VT3 | 107 | D | 39.7 | 33.9 | 38.8 | 7.2 | 44.2 | 72.1 | 29.8 | 46.9 | 3,365 | 4 | 40,077 |
| NuTech/G2 Gen | 5H-806 | HX,RR2 | 106 | D | 40.4 | 32.2 | 37.7 | 6.1 | 38.9 | 69.6 | 37.4 | 47.3 | 3,207 | 6 | 38,869 |
| Jung | HDS76V78 | VT3 | 107 | L | 46.0 | 33.2 | 52.9 | 7.5 | 29.5 | 59.9 | 46.7 | 50.9 | 2,608 | 27 | 35,990 |
| FS InVISION | FS 55ZV4 RIB | VT3P,B | 105 | D | 33.1 | 35.2 | 38.8 | 6.5 | 41.4 | 71.7 | 22.4 | 50.6 | 3,369 | 3 | 33,454 |
| Great Lakes | 5939VT3PRIB | VT3P,B | 109 | D | 33.5 | 36.2 | 35.6 | 6.3 | 37.2 | 69.9 | 37.6 | 44.1 | 3,200 | 7 | 32,160 |
| Dairyland | HiDF3108RA | STX,B | 108 | S | 34.4 | 34.5 | 38.3 | 6.7 | 27.5 | 67.4 | 43.1 | 52.0 | 3,097 | 8 | 31,961 |
| Renk | RK809GTCBLLRW | 3000GT | 110 | D | 34.8 | 37.2 | 42.2 | 6.9 | 37.0 | 65.8 | 38.0 | 50.5 | 2,985 | 12 | 31,163 |
| FS InVISION | FS 57QX1 RIB | STX,B | 107 | D | 34.9 | 34.8 | 42.9 | 6.3 | 38.5 | 69.1 | 36.7 | 45.2 | 2,900 | 13 | 30,363 |
| AgriGold | A6458VT3PRIB | VT3P,B | 110 | D | 30.0 | 35.2 | 29.2 | 7.3 | 33.5 | 71.9 | 38.7 | 46.2 | 3,346 | 5 | 30,114 |
| Great Lakes | 5785VT3PRIB | VT3P,B | 107 | D | 35.6 | 33.2 | 48.4 | 7.5 | 32.1 | 62.7 | 41.9 | 54.6 | 2,811 | 16 | 30,021 |
| Dairyland | HiDF3510SSX | STX | 110 | S | 32.2 | 34.2 | 36.2 | 6.6 | 25.6 | 66.9 | 45.0 | 50.1 | 3,054 | 9 | 29,502 |
| Great Lakes | 5368VT3PRIB | VT3P,B | 103 | D | 28.0 | 36.8 | 32.0 | 7.0 | 36.4 | 74.3 | 35.9 | 47.1 | 3,509 | 2 | 29,476 |
| FS InVISION | FS 60ZV4 | VT3P | 110 | D | 34.6 | 37.2 | 45.2 | 7.1 | 39.6 | 63.4 | 35.3 | 49.2 | 2,820 | 15 | 29,272 |
| LG Seeds | LG2549VT3PRIB | VT3P,B | 109 | D | 27.3 | 33.9 | 30.8 | 7.6 | 34.2 | 74.8 | 37.4 | 50.4 | 3,565 | 1 | 29,197 |
| Jung | HDS76V50 | VT3P | 105 | L | 36.9 | 32.2 | 49.9 | 6.5 | 26.0 | 59.6 | 49.9 | 50.9 | 2,587 | 28 | 28,638 |
| FS InVISION | FS 59SX1 RIB | STX,B | 109 | D | 33.9 | 37.8 | 44.1 | 6.4 | 37.7 | 63.1 | 36.7 | 45.8 | 2,780 | 19 | 28,273 |
| FS InVISION | FS 54VX1 RIB | STX,B | 104 | D | 33.4 | 36.8 | 47.8 | 8.0 | 36.5 | 63.0 | 38.9 | 51.5 | 2,810 | 17 | 28,156 |
| AgriGold | A6422VT3Pro | VT3P | 108 | D | 34.5 | 35.8 | 50.6 | 6.8 | 33.4 | 61.0 | 43.3 | 50.4 | 2,672 | 24 | 27,655 |
| NuTech | 3A-306 | GT | 106 | D | 32.7 | 34.2 | 38.3 | 6.3 | 22.5 | 62.3 | 49.7 | 47.0 | 2,732 | 21 | 27,621 |
| Great Lakes | 5525VT3PRO | VT3P | 105 | D | 36.6 | 35.5 | 41.2 | 6.1 | 32.7 | 59.8 | 43.9 | 39.0 | 2,514 | 30 | 27,604 |
| Renk | RK743VT3P | VT3P | 109 | N | 35.8 | 37.5 | 45.8 | 6.6 | 40.3 | 62.0 | 34.7 | 45.0 | 2,699 | 23 | 27,368 |
| NuTech | 5N-406 | 3000GT | 106 | D | 30.3 | 31.9 | 39.2 | 6.8 | 34.1 | 66.3 | 39.1 | 48.5 | 3,005 | 11 | 27,315 |
| AgriGold | A6358VT3Pro | VT3P | 105 | D | 33.0 | 35.2 | 45.3 | 6.4 | 35.5 | 62.0 | 40.2 | 50.6 | 2,741 | 20 | 27,136 |
| Cornelius | C619XTLL | HXT | 110 | D | 33.9 | 34.8 | 44.3 | 6.0 | 38.8 | 61.5 | 35.6 | 42.4 | 2,647 | 25 | 26,920 |

Results Table continued next page

2013 Corn Silage Harvest Report for Wisconsin South Central [WISC]

Russ Warmka, Dodge County, WI 53933 [FOX LAKE]



All 30 Products Tested, 3 Rep. Yield Average (continued)

| Company/Brand | Product/Brand† | Technology† | CRM Type† | Yield at 70% H ₂ O (Tons/A) | Stand (x1,000) | Dry Matter (%) | Crude Protein (% DM) | Starch (% DM) | NEL (Mcal/lb) | NDF (% DM) | NDFd 30 Hour (% NDF) | Milk/Ton DM†† (Lbs) | Rank | Milk/Acre (Lbs) |
|----------------|----------------|-------------|-----------|--|----------------|----------------|----------------------|---------------|---------------|------------|----------------------|---------------------|------|-----------------|
| FS InVISION | FS 53TV4 RIB | VT3P,B | 103 D | 34.3 | 34.5 | 50.7 | 6.8 | 32.8 | 60.3 | 43.8 | 48.2 | 2,613 | 26 | 26,888 |
| AgriGold | A6473STXRIB | STX,B | 110 D | 30.6 | 36.2 | 41.9 | 6.8 | 39.3 | 64.9 | 34.5 | 42.6 | 2,869 | 14 | 26,337 |
| Dairyland | HiDF3702-9 | 3000GT | 102 S | 28.1 | 35.8 | 42.9 | 7.1 | 42.4 | 66.4 | 32.8 | 49.9 | 3,019 | 10 | 25,450 |
| Great Lakes | 5884VT3PRIB | VT3P,B | 108 D | 30.1 | 37.2 | 48.6 | 7.4 | 37.0 | 63.0 | 38.0 | 50.8 | 2,807 | 18 | 25,347 |
| NuTech | 0A-205 | None | 105 D | 30.2 | 33.5 | 46.4 | 7.2 | 29.6 | 59.2 | 45.9 | 47.5 | 2,536 | 29 | 22,976 |
| AgriGold | A6408VT3PRIB | VT3P,B | 107 D | 24.3 | 35.5 | 47.8 | 7.3 | 21.5 | 62.4 | 48.4 | 43.4 | 2,711 | 22 | 19,763 |
| Test Average = | | | | 33.4 | 35.1 | 41.8 | 6.8 | 35 | 65.1 | 39.7 | 48.0 | 2,919 | | 29,169 |
| LSD(0.10) = | | | | 10.4 | | | | | | | | | | |
| C.V. = | | | | 22.7 | | | | | | | | | | |

John W. Z...

prairie.ag.inc@gmail.com, (815) 739-2688

† See last page for Product/Brand, Technology and Type information. †† Milk/ton: calculated from NIRS data using Milk2006. **Bold** values significantly above test average. **ns** = not significant

TEST COMMENTS: *The late season drought strikes again! It did not take much soil difference to create high yield variability here. Ear development was excellent throughout the whole test. The lack of rain in July caused problems for everyone in the area. Plant height was excellent and disease pressure was light. The plants just could not hold on in the hot dry conditions. Corn planted around the test at a later date was able to hold on and had a greener appearance.*

Visit us at www.firstseedtests.com

Report Date: 9/23/2013

Revised:

AgSCI Copyright 2013

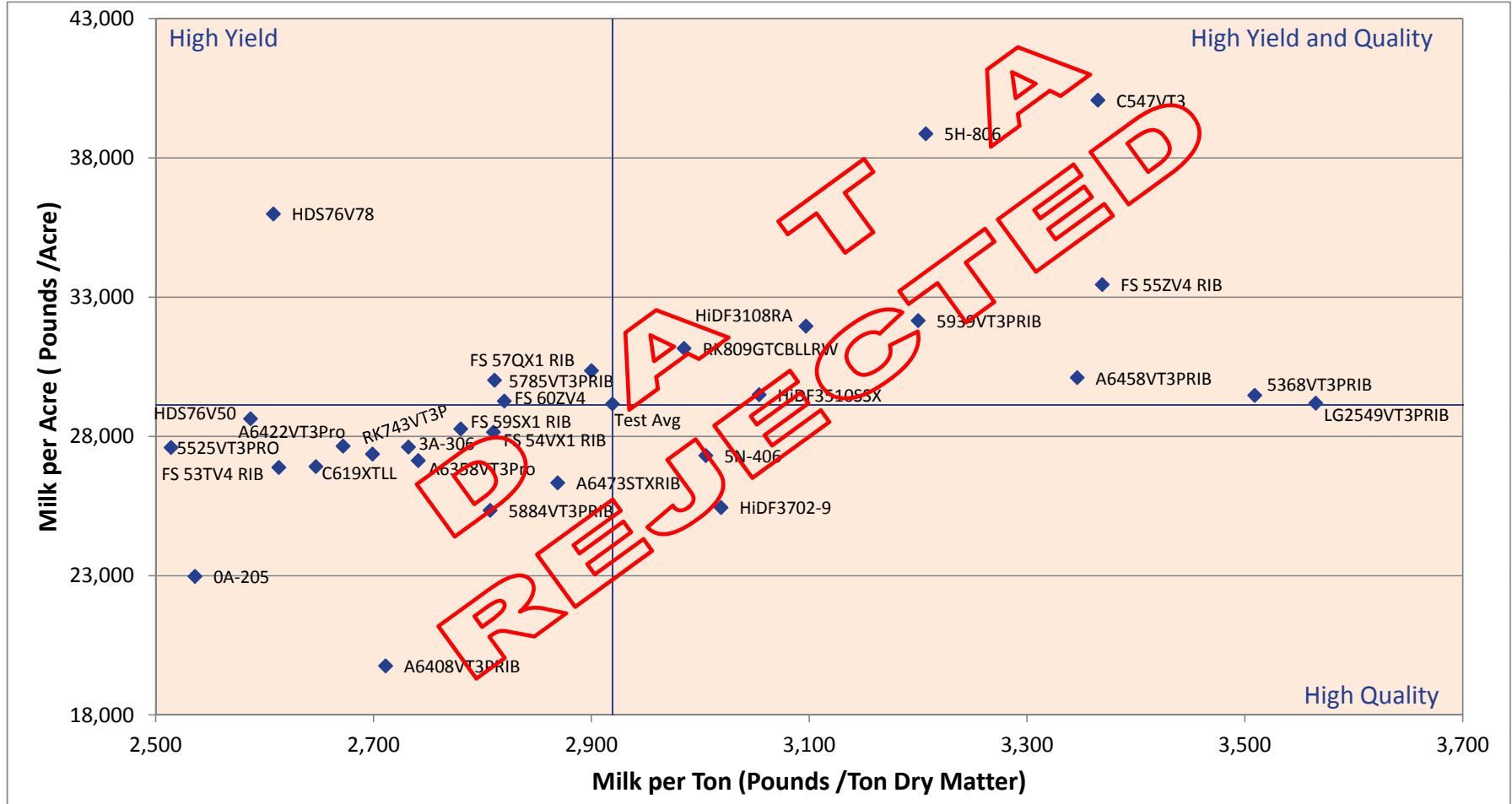
2013 Corn Silage Harvest Report for Wisconsin South Central [WISC]

Russ Warmka, Dodge County, WI 53933 [FOX LAKE]



PREV. CROP/HERB: Alfalfa
 SOIL INFORMATION: Mendota-Plano silt loam, conventional w/o fall till, mod. high P, mod. high K, non-irrigated
 UNITS N-P-K Applied: 197-0-0, N Applied: 120 Spring, 77 Side
 PEST MANAGEMENT: Force, Impact, Atrazine, Hornet
 SEEDED - RATE: May 17 32-38,000 /A
 HARVESTED - STAND: Sep 13 35,100 /A

103 - 110 Day CRM
 L2013WISC08



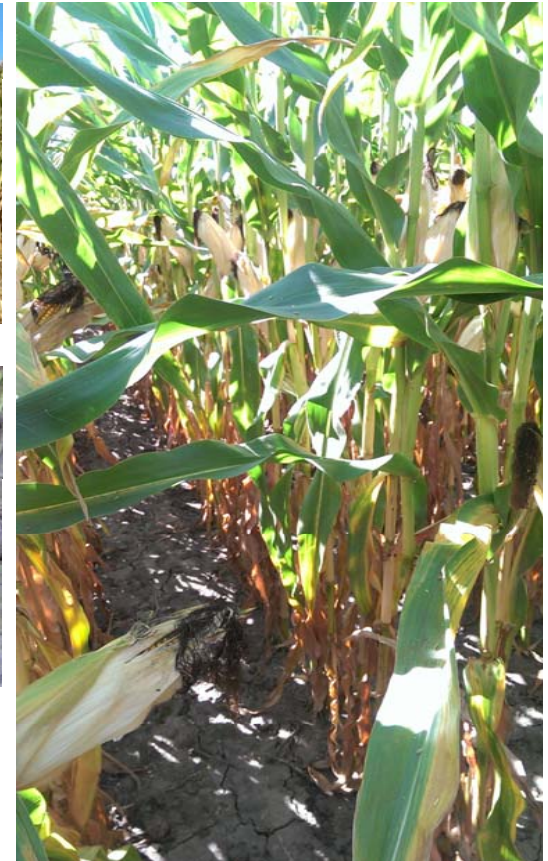
Report Date: 9/23/2013

Revised:

Visit us at www.firstseedtests.com

2013 Corn Silage Images for Wisconsin South Central [WISC]

Russ Warmka, Dodge County, WI 53933 [FOX LAKE]



COMMENTS: *The top left 2 photos speak volumes about this test location and the environment impact. One corn in the left picture is green and the right plot is nearly ready for the combine.*

Footnotes and Abbreviation Descriptions

Brand Footnotes

| | |
|----|---|
| ^ | G2® brand seed is distributed by NuTech Seed, LLC. HPT® brand seed is distributed by Hoegemeyer Hybrids, Inc. RPM® brand seed is distributed by Doebler's PA Hybrids, Inc. Supreme EX® brand seed is distributed by Seed Consultants, Inc. VPMMaxx® brand seed is distributed by AgVenture, Inc. XL® and Phoenix® brand seed is distributed by Beck's Superior Hybrids. Curry®, G2®, HPT®, RPM®, Supreme EX®, VPMMaxx® and XL® are registered trademarks of DuPont Pioneer. |
| GC | Grower Comparison product included by F.I.R.S.T. when space permits. |

Corn Technologies*

| | | | |
|----------|--|---------|---|
| 3000GT | Agrisure® 3000GT (CB,RW,LL,GT) | HX | Herculex® 1, contains LL |
| 3011A | Agrisure® Artesian® (CB,RW,LL,GT) | HX,RR2 | Herculex® 1, Roundup Ready 2 Corn |
| 3110 | Agrisure® Viptera® 3110 (Vip, CB,LL,GT) | HXRW | Herculex® rootworm, contains LL |
| 3111 | Agrisure® Viptera® 3111 (Vip,CB,RW,LL,GT) | HXT | Herculex® Xtra (HX,HXRW,LL) |
| 3122 | Agrisure® 3122 (CB,HXX,RW,LL,GT) | HXT,RR2 | Herculex® Xtra, Roundup Ready 2 Corn |
| 3220 | Agrisure® Viptera® 3220 (Vip,CB,HX,LL,GT) | LL | LibertyLink® |
| AM | Optimum® AcreMax® (YGCB,HX,LL,RR2) | None | conventional corn |
| AM-R | Optimum® AcreMax® (YGCB,HX,RR2) | OI | Optimum® Intrasect® (YGCB,HX,LL,RR2) |
| AM1 | Optimum® AcreMax®1 (HXT,LL,RR2) | OIX | Optimum® Intrasect® Xtra (YGCB,HXT,LL,RR2) |
| AMRW | Optimum® AcreMax® Rootworm (HXRW,LL,RR2) | OIXT | Optimum® Intrasect® Xtreme (YGCB,HXT,RW,LL,RR2) |
| AMRW-R | Optimum® AcreMax® Rootworm (HXRW,RR2) | OT | Optimum® TRIssect® (HX,RW,LL,RR2) |
| AMX | Optimum® AcreMax® Xtra (YGCB,HXT,LL,RR2) | RR2 | Roundup Ready® 2 Corn |
| AMX-R | Optimum® AcreMax® Xtra (YGCB,HXT,RR2) | STX | SmartStax® (VT3P,HXX) |
| AMXT | Optimum® AcreMax® Xtreme (YGCB,HXT,LL,RR2) | VT2P | Genuity® VT Double Pro® |
| B | Blended seed (i.e. refuge blend) | VT3 | YieldGard VT Triple® |
| CB/LL | Agrisure® CB/LL | VT3P | Genuity® VT Triple Pro® |
| CB/LL/RW | Agrisure® CB/LL/RW | YGCB | YieldGard® Corn Borer |
| GT | Agrisure® GT | | |
| GT/CB/LL | Agrisure® GT/CB/LL | | |

* The refuge component genetics may vary in a refuge blend seed product.

Silage Hybrid Type

| | |
|---|--------------|
| B | Brown Midrib |
| D | Dual Purpose |
| L | Leafy |
| N | NutriDense |
| O | Other |
| S | Silage only |