

2012 CORN SILAGE Harvest Report for Wisconsin South Central [WISC]

Sidney Stibbs, Columbia County, WI 53960 [ARLINGTON] 103-110 Day CRM

L2WISC07

SOIL INFORMATION: Plano/Ripon silt loam, conventional w/ fall till, mod. high P, mod. high K, non-irrigated

APPLIED NITROGEN: 225 Units - 75 Fall, 150 Spring

SEEDED - RATE: May 10 - 32 to 38,000

TOP 24 OF 24 FOR MILK/ACRE

PEST MANAGEMENT: Force, Accent, Status

HARVESTED - STAND: Sep 2 36,991 /A

YIELD, AVERAGE of (3) REPLICATIONS

Company/Brand	Product/Brand†	Technology†	Mat.	Type†	Yield at 70% H ₂ O (Tons/A)	Stand (x1,000)	Dry Matter (%)	Crude Protein (% DM)	Starch (% DM)	NEL (Mcal/cwt)	NDF (% DM)	NDFD 30 Hour (% NDF)	Milk/Ton DM†† (Lbs)	Rank	Milk/Acre (Lbs)
Dairyland	HiDF3108-Q	HXT,RR2	108	O	26.4	35.8	34.2	7.4	34.6	76.0	37.2	55.0	3,464	3	27,477
Great Lakes	5939G3VT3	VT3	109	D	23.0	38.2	34.2	8.7	38.6	79.0	33.2	60.6	3,780	1	26,029
FS InVISION	FS 54VX1RIB	STX	104	D	25.4	39.5	41.3	8.0	42.5	80.0	32.5	59.9	3,342	10	25,505
AgriGold	A6323GT3	3000GT	103	D	25.5	40.2	39.4	5.9	40.6	79.4	34.5	57.7	3,321	11	25,420
LG Seeds	LG2549VT3	VT3	109	D	24.3	34.5	35.5	7.1	33.9	77.0	37.6	59.3	3,427	5	25,025
NuTech	5N-406	3000GT	106	D	21.6	30.9	33.8	8.0	35.9	78.6	34.8	60.8	3,650	2	23,612
Trelay	7VP293	VT3P	110	D	23.3	37.2	39.1	7.2	36.6	77.8	36.4	59.5	3,377	8	23,596
Great Lakes	5339GT3	3000GT	103	D	23.1	37.2	36.1	7.5	34.4	77.0	36.1	60.4	3,397	7	23,491
FS InVISION	FS 59SV4	VT3P	109	D	23.5	39.8	38.4	8.3	33.2	75.3	37.6	57.2	3,259	16	22,980
FS InVISION	FS 53JV3NDS	VT3	103	N	21.9	36.2	34.9	8.9	33.2	75.8	36.9	56.2	3,461	4	22,770
AgriGold	A6458VT3	VT3	110	D	22.6	36.5	34.8	6.9	29.4	75.0	41.1	59.1	3,314	12	22,518
FS InVISION	FS 55ZV4	VT3P	105	D	23.2	38.8	42.4	7.4	38.5	78.3	36.0	59.3	3,205	19	22,320
Jung	HDS76V50	VT3P	105	L	21.6	34.2	35.8	8.5	31.3	74.3	38.9	56.3	3,314	13	21,477
Renk	RK795VT3P	VT3P	108	D	20.2	34.8	34.6	7.9	33.6	77.0	35.3	60.7	3,412	6	20,725
Great Lakes	5643VT3PRO	VT3P	106	D	20.8	39.2	34.3	8.9	28.3	74.7	37.3	61.6	3,253	17	20,343
Jung	HDS76V78	VT3	107	L	22.2	37.2	34.2	7.2	27.1	73.6	41.6	58.1	3,044	23	20,282
Dairyland	HiDF3702-9	3000GT	102	O	21.0	37.2	33.8	8.0	27.7	73.8	40.4	57.9	3,184	20	20,043
FS InVISION	FS 60TV4	VT3P	110	D	21.0	35.2	36.5	8.4	26.1	74.5	40.9	58.6	3,117	22	19,670
Renk	RK733VT3P NDS	VT3P	107	N	19.7	36.2	32.0	9.7	27.9	75.2	36.6	58.4	3,306	14	19,504
FS InVISION	FS 58MV4	VT3P	108	D	19.4	39.2	33.6	8.9	29.4	73.1	39.6	54.4	3,306	15	19,209
G2 Genetics	5H-806^	HX,RR2	106	D	19.0	38.5	33.3	8.1	32.4	75.7	36.2	61.4	3,350	9	19,071
NuTech	5N-910	3000GT	110	D	18.2	40.2	33.2	8.1	30.4	74.5	38.0	53.8	3,217	18	17,612
Trelay	7VP104	VT3P	107	D	18.3	36.2	33.8	9.1	23.5	72.4	41.0	61.2	3,147	21	17,298
Dairyland	EXP-11302	HX,RR2	110	D	18.8	35.2	29.1	9.5	19.0	73.1	41.3	63.4	3,018	24	17,020
Test Average =					21.8	37.0	35.3	8.1	32.0	75.9	37.5	58.8	3,319		21,792
LSD(0.10) =					1.5										
C.V. =					5.1										

 † See last page for Product/Brand, Technology and Type information. †† Milk/ton: calculated from NIRS data using Milk2006. **Bold** values significantly above test average. **GC** = grower comparison entry, **ns** = not significant

TEST COMMENTS: *Early on, I though the field was going to be a loss. But with a late 2" rain, the plants really greened up and seemed to put on some last minute growth. However, the damage was already done as kernal set was only 50 - 75% of normal. Ear smut was seen throughout the field and almost every hybrid had it present in the plots. Plant height was short to medium tall. The field looked excellent early but the hot dry July took away alot of yield potential. Samples analyzed by Dairyland Labs.*

Lat: 43.35557, Long: -89.24691

 Visit us at www.firstseedtests.com

AgSCI Copyright 2012

2012 CORN SILAGE Harvest Report for Wisconsin South Central [WISC]

Sidney Stibbs, Columbia County, WI 53960 [ARLINGTON] 103-110 Day CRM

SOIL DESCRIPTION: Plano/Ripon silt loam, conventional w/ fall till, mod. high P, mod. high K, non-irrigated L2WISC07

APPLIED NITROGEN: 225 Units - 75 Fall, 150 Spring

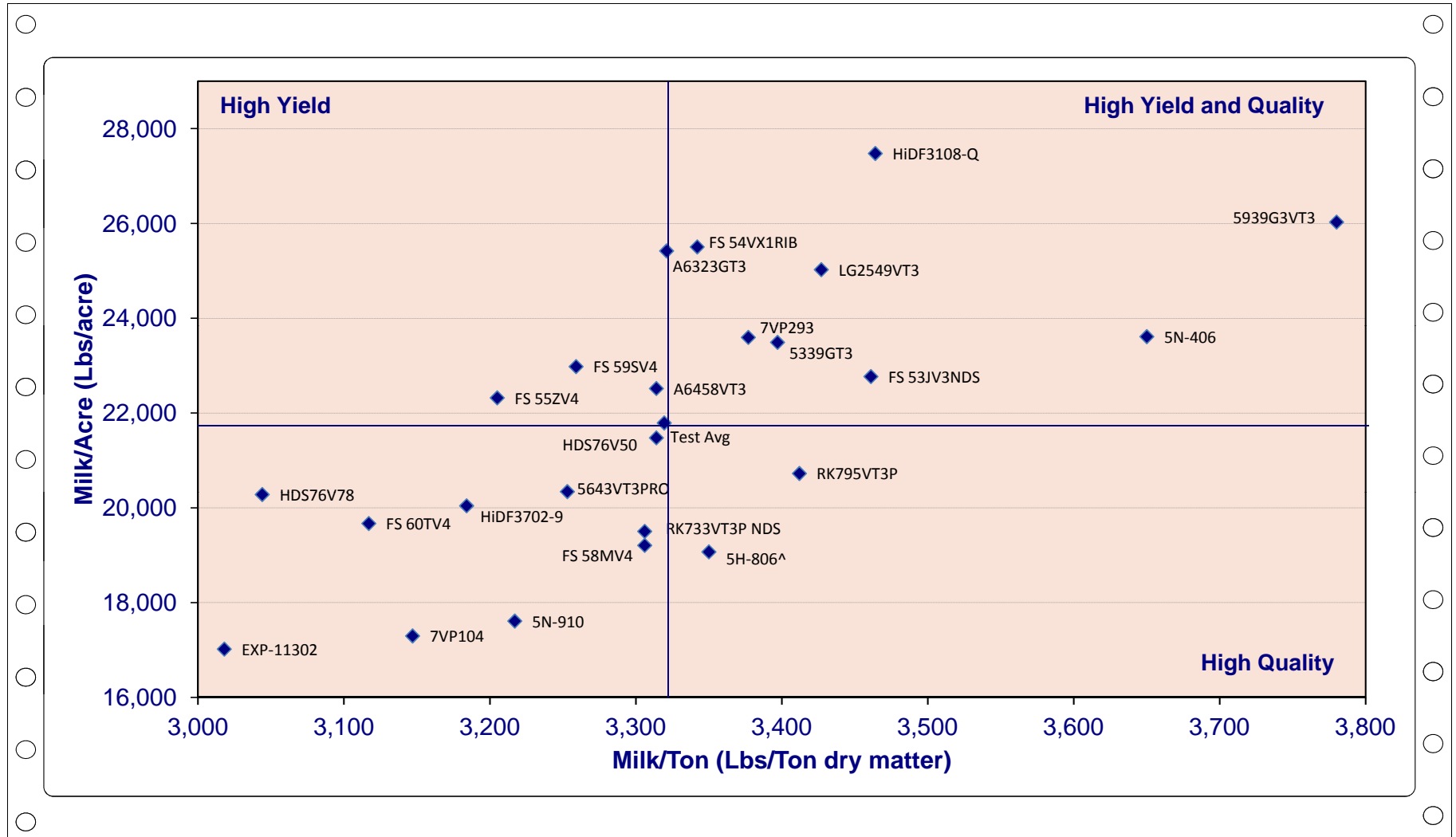
SEEDED - RATE: May 10 - Company recommended

TOP 24 OF 24 FOR MILK/ACRE

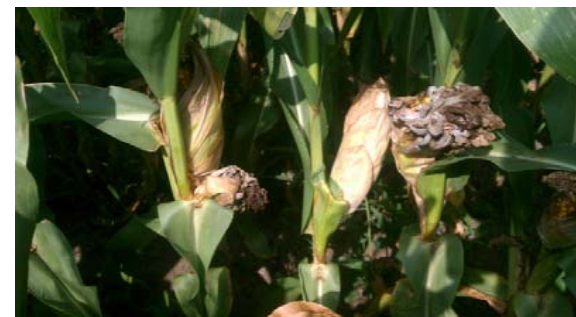
PEST MANAGEMENT: Force, Accent, Status

HARVESTED - STAND: Sep 2 36,991 /A

YIELD, AVERAGE of (3) REPLICATIONS



2012 IMAGES from Wisconsin South Central [WISC] Corn Silage Location - ARLINGTON



COMMENTS: *No real heavy stalked hybrids here. Notice the size of the ear smut on the plants. This really makes for a dark sample from the plots.*



Footnotes, Abbreviations, and Trademarks

Brand Footnotes

^ G2® brand seed is distributed by NuTech Seed, LLC. HPT® brand seed is distributed by Hoegemeyer Hybrids, Inc. RPM® brand seed is distributed by Doebler's PA Hybrids, Inc. Supreme EX® brand seed is distributed by Seed Consultants, Inc. VPMmax® brand seed is distributed by AgVenture, Inc. XL® and Phoenix® brand seed is distributed by Beck's Superior Hybrids. Curry®, G2®, HPT®, RPM®, Supreme EX®, VPMmax® and XL® are registered trademarks of DuPont Pioneer.

Technologies

3111	Agrisure® Viptera™ 3111	GT	Agrisure® GT	STS	STS® - sulfonyleurea tolerant soybeans
3122	Agrisure® 3122	GT/CB/LL	Agrisure® GT/CB/LL	STX	SmartStax®
4011	Agrisure® 4011	HX	HERCULEX® I Insect Protection	STX-R	SmartStax® Refuge Corn Blend
3000GT	Agrisure® 3000GT	HXT	HERCULEX® XTRA Insect Protection	VT2P	Genuity® VT Double PRO®
AM1	Optimum® AcreMax® 1	LL	LibertyLink®	VT2P-R	Genuity® VT Double PRO® RIB Corn Blend
AMX	Optimum® AcreMax® Xtra	OI	Optimum® Intrasect™	VT3	YieldGard VT Triple®
CB/LL	Agrisure® CB/LL	RR	Roundup Ready® Soybeans	VT3P	Genuity® VT Triple PRO®
CB/LL/RW	Agrisure® CB/LL/RW	RR2	Roundup Ready® Corn 2	VT3P-R	Genuity® VT Triple PRO® RIB Corn Blend
Conv	Conventional, non-GMO	RR2Y	Genuity® Roundup Ready 2 Yield®		

Hybrid Type

B	Brown Midrib
D	Dual Purpose
L	Leafy
N	NutriDense
O	Other
S	Silage only

Trademarks

- Excalibre™ is a trademark of Advanced Biological Marketing
- Allegiance®, Gaucho®, LibertyLink®, Poncho®, Raxil®, Trilex®, and VOTIVO™ are trademarks of Bayer AG.
- Stamina® is a trademark of BASF
- Escalate® is a trademark of Beck's Superior Hybrids, Inc.
- Rancona® is a trademark of Chemtura Corporation.
- Herculex® is a trademark of Dow AgroSciences LLC.
- STS® is a trademark of E.I. DuPont Nemours & Co.
- Optimize® is a trademark of EMD Crop BioScience Inc.
- SoyShield™ Plus is a trademark of Latham Hi-Tech Seeds
- Acceleron®, Genuity®, Roundup Ready®, Roundup Ready 2 Yield®, SmartStax®, VT Double PRO®, VT Triple PRO®, and YieldGard VT Triple® are trademarks of Monsanto Technology LLC.
- Servo DPI™ is a trademark of Ohlde Seed.
- AcreMax®, Intrasect™ and Optimum® are trademarks of Pioneer Hi-Bred.
- SureStand™ is a trademark of Steyer Seeds.
- Agrisure®, ApronMaxx®, ApronXL®, Avicta®, Cruiser®, CruiserMaxx®, Dynasty®, Maxim® and Viptera™ are trademarks of a Syngenta Group Company.
- Inovate™ System is a trademark of Valent
- Protinus™ is a trademark of Wolf Trax, Inc.